



Point West, 116 Cromwell Road

£995 Per Week

- Underground Parking
- 24 Concierge
- 3 mins walk to Gloucester Road Station
- Balcony
- Oak Hardwood flooring throughout
- Underfloor heating

Point West

Approximate Gross Internal Area = 103 sq m / 1109 sq ft

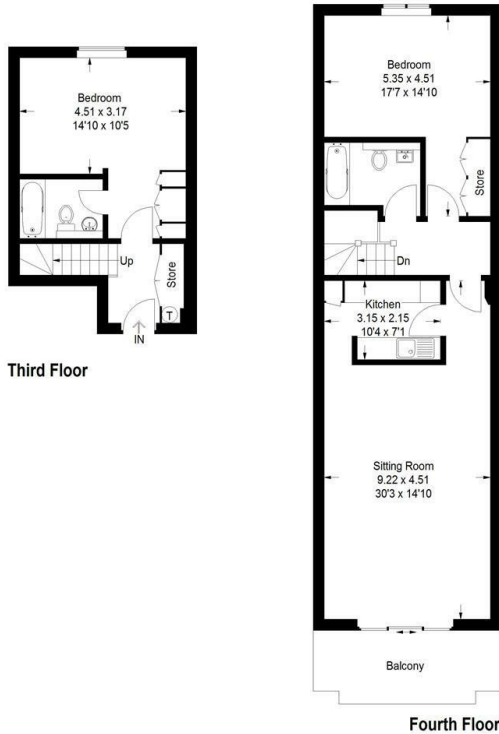
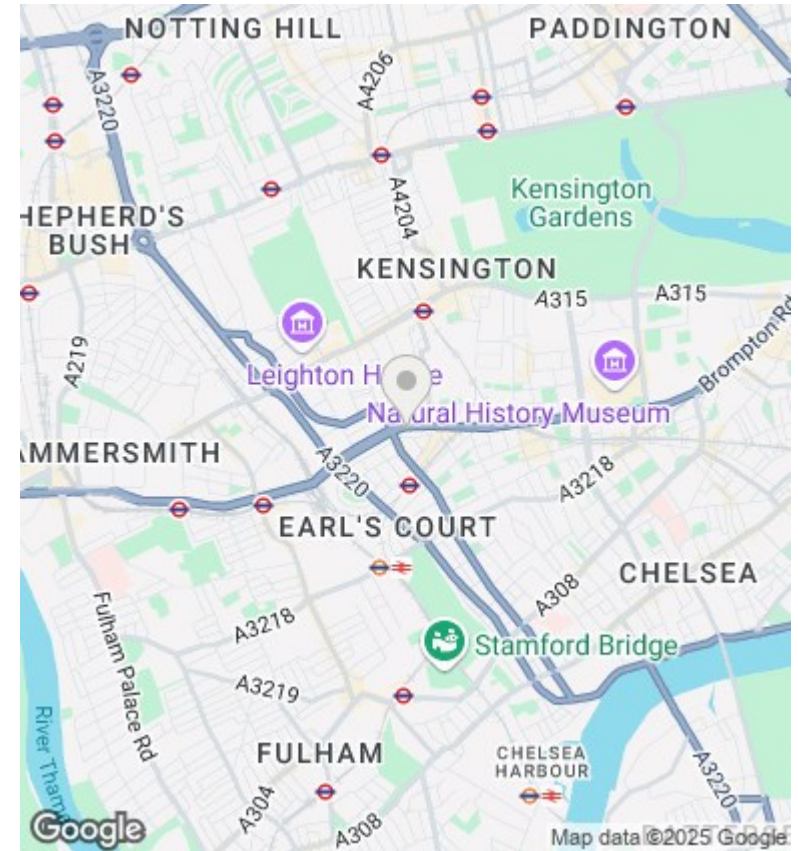


Illustration for identification purposes only, measurements are approximate, not to scale.
FloorplansUsketch.com © 2014 (ID115918)



Directions

Viewings

Viewings by arrangement only. Call 02070990800 to make an appointment.

Council Tax Band

G

EPC Rating:

C

Energy Efficiency Rating		Current	Potential
Very energy efficient - lower running costs			
(92 plus) A			
(81-91) B		79	82
(69-80) C			
(55-68) D			
(39-54) E			
(21-38) F			
(1-20) G			
Not energy efficient - higher running costs			
England & Wales		EU Directive 2002/91/EC	