

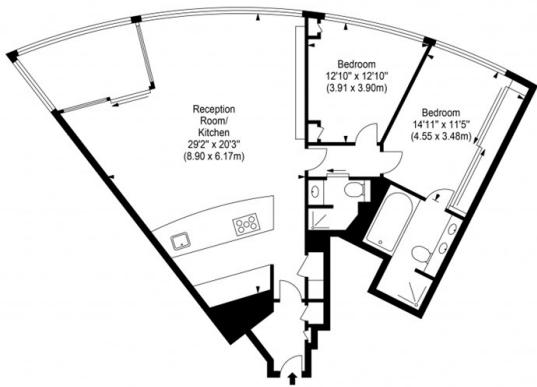
## The Tower, St. George Wharf, London

£1,170 Per Week

- Generous 1,145 sq ft of sleek, modern living space
- Stunning new build apartment in the iconic Tower at St. George Wharf
- Residents benefit from world-class amenities including a luxury spa, fully equipped gym, private business lounge, and an on-site cinema room.
- Two generously sized bedrooms, ideal for comfort and relaxation

St. George Wharf, London, SW8 2D

Approx. Gross Internal Area 1145 sq ft - 106.39 sq m



Ref  
Disclaimer : Floor plan measurements are approximate and are for illustrative purposes only  
While we do not doubt the floor plan accuracy and completeness, you or your advisors should  
conduct a careful, independent investigation of the property in respect of monetary valuation

Directions

Viewings

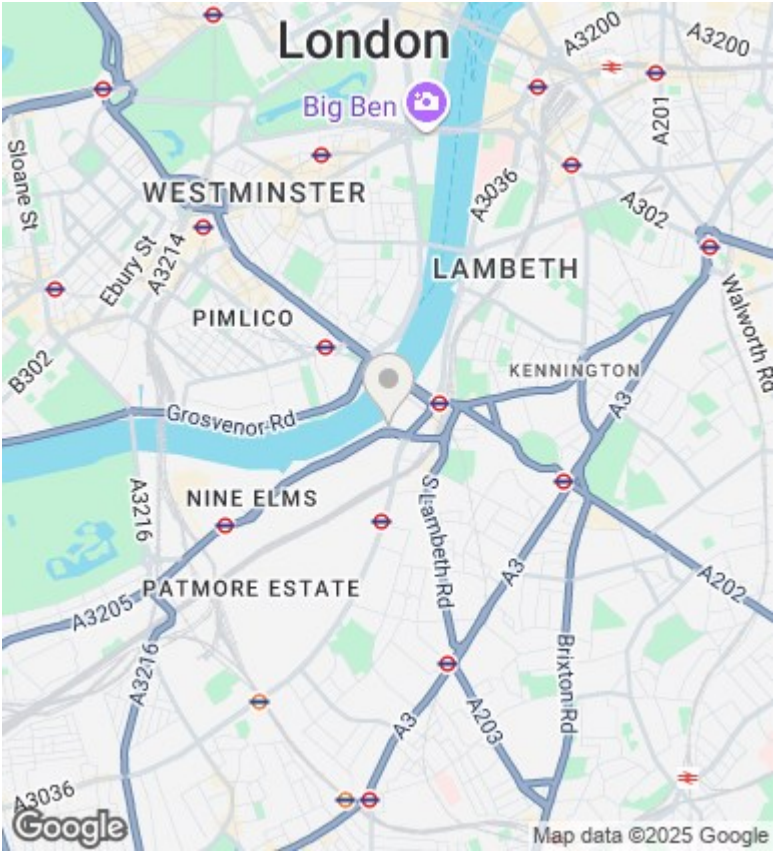
Viewings by arrangement only. Call 02070990800 to make an appointment.

Council Tax Band

H

EPC Rating:

B



Energy Efficiency Rating		
	Current	Potential
Very energy efficient - lower running costs		
(92 plus) A		
(81-91) B	82	83
(69-80) C		
(55-68) D		
(39-54) E		
(21-38) F		
(1-20) G		
Not energy efficient - higher running costs		
England & Wales		EU Directive 2002/91/EC