

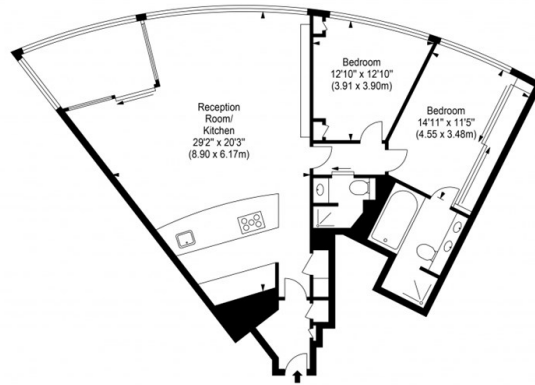
## The Tower, St. George Wharf, London

£1,195 Per Week

- 2 Bedrooms
- Reception
- Concierge
- Bathroom
- Open Plan Kitchen
- Communal Business Lounge
- Shower Room
- Leisure Facilities
- EPC Rating B

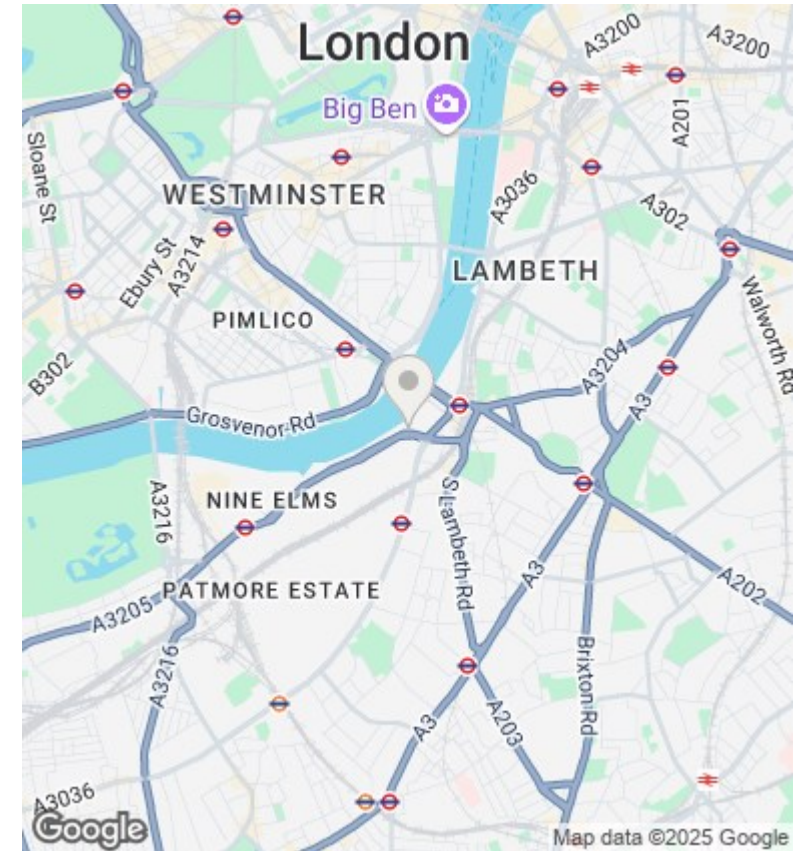
## St. George Wharf, London, SW8 2D

Approx. Gross Internal Area 1145 sq ft - 106.39 sq m



Ref:   
 Disclaimer: Floor plan measurements are approximate and are for illustrative purposes only. While we do not doubt the floor plan accuracy and completeness, you or your advisors should conduct a careful, independent investigation of the property in respect of monetary valuation.

Copyright THE BLEUPLAN



### Directions

### Viewings

Viewings by arrangement only. Call 02070990800 to make an appointment.

### Council Tax Band

H

### EPC Rating:

B

Energy Efficiency Rating		Current	Potential
Very energy efficient - lower running costs			
(92 plus) A			
(81-91) B		82	83
(69-80) C			
(55-68) D			
(39-54) E			
(21-38) F			
(1-20) G			
Not energy efficient - higher running costs			
England & Wales		EU Directive 2002/91/EC	