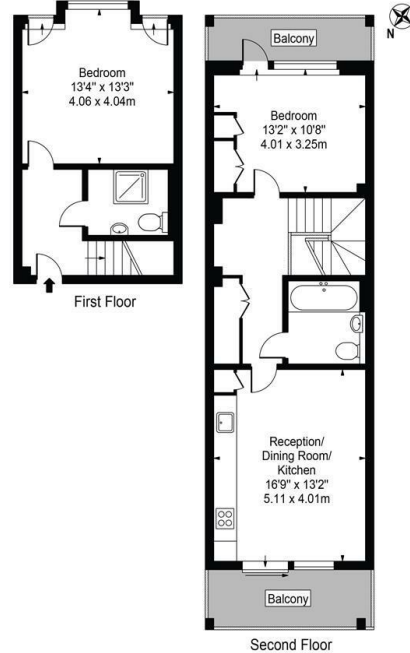




Globe View House, Pocock Street, London, SE1

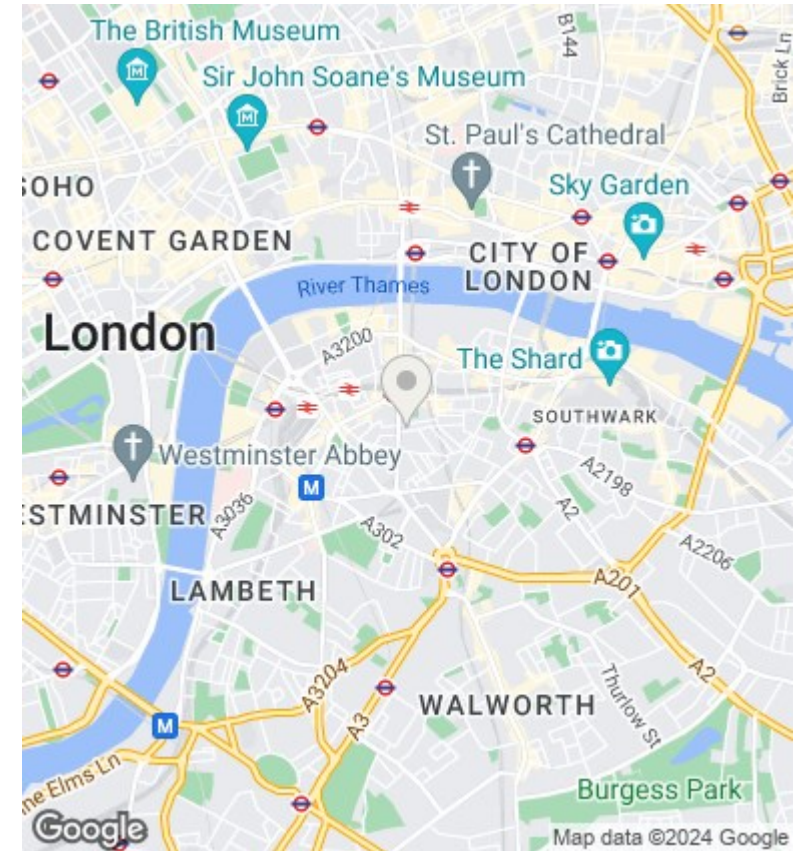
Reduced £800,000

Globe View House
 Approx. Gross Internal Area 863 Sq Ft - 80.18 Sq M



For Illustration Purposes Only - Not To Scale

This floor plan should be used as a general outline for guidance only and does not constitute in whole or in part an offer or contract. Any intending purchaser or lessee should satisfy themselves by inspection, searches, enquiries and full survey as to the correctness of each statement. Any areas, measurements or distances quoted are approximate and should not be used to value a property or be the basis of any sale or let.



Directions

Viewings

Viewings by arrangement only. Call 02070990800 to make an appointment.

Council Tax Band

F

EPC Rating:

B

Energy Efficiency Rating		Current	Potential
<i>Very energy efficient - lower running costs</i>			
(92 plus) A			
(81-91) B		85	85
(69-80) C			
(55-68) D			
(39-54) E			
(21-38) F			
(1-20) G			
<i>Not energy efficient - higher running costs</i>			
England & Wales		EU Directive 2002/91/EC	