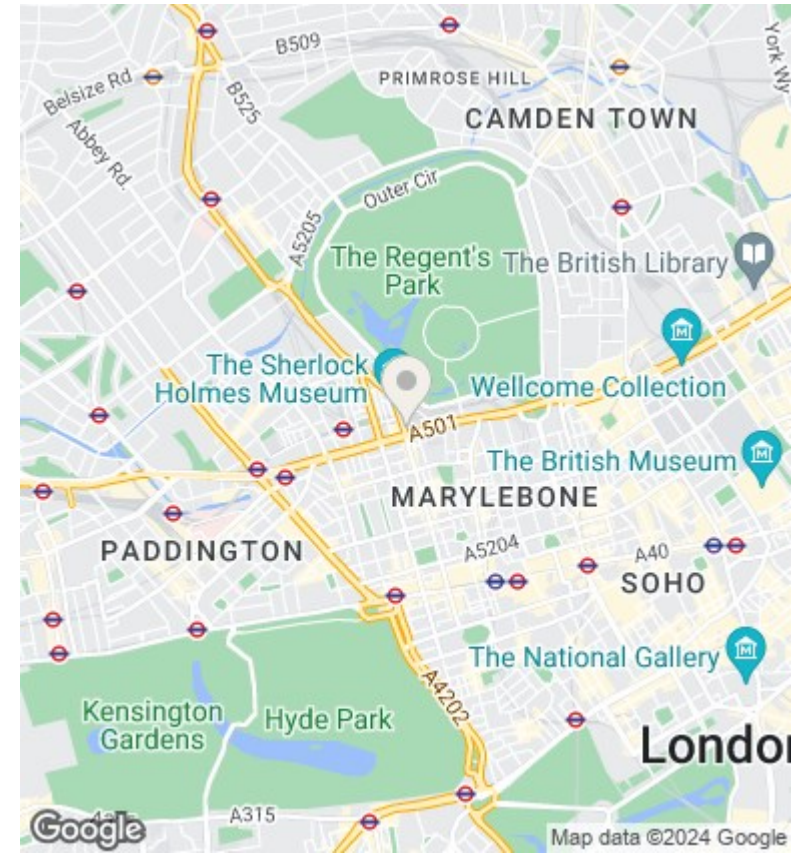
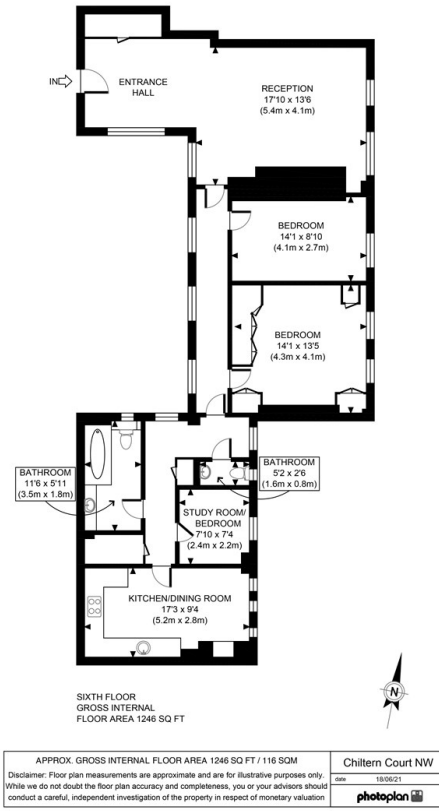




Chiltern Court, Baker Street, London NW1

Asking Price £1,350,000

- Lift Access
- 1246 sq. ft.
- Portered Development
- 24/7 Porterage
- Regent's Park
- Convenient access to transport
- Restaurants and Shops



Directions

Viewings

Viewings by arrangement only. Call 02070990800 to make an appointment.

Council Tax Band

G

EPC Rating:

C

