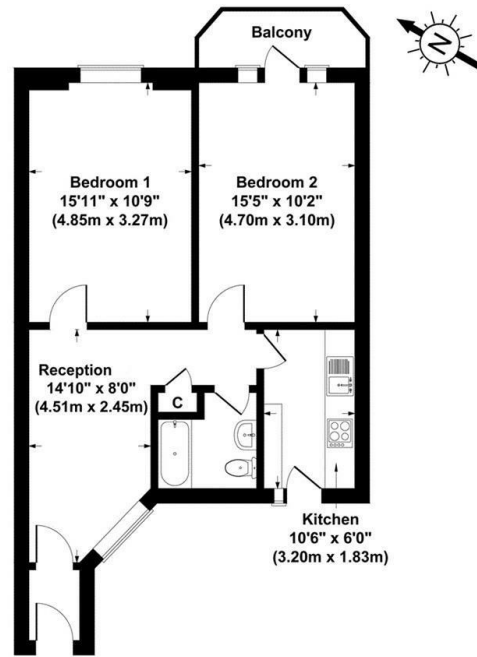




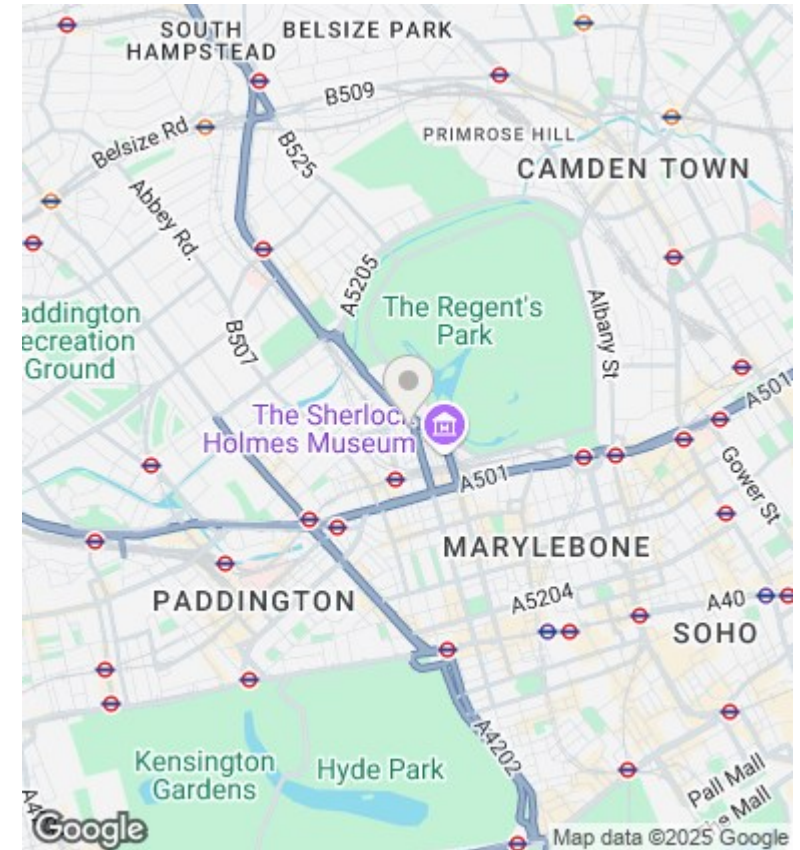
## Ivor Court, Gloucester Place, London NW1

Asking Price £670,000

- Share of Freehold
- Fully tiled bathroom
- Close to The London Business School, Regent's Park, and Baker Street's amenities and travel connections
- Two double bedrooms with picturesque views of Regent's Park
- 24-hour porterage
- Separate kitchen featuring a breakfast bar
- 2 x Lifts



Seventh Floor  
 Ivor Court, London, NW1  
 Gross Internal Area 624 sq ft / 58 sq metres  
 Not to Scale. Produced by The Plan Portal 2023  
 For Illustrative Purposes Only.



## Directions

## Viewings

Viewings by arrangement only. Call 02070990800 to make an appointment.

## Council Tax Band

D

## EPC Rating:

C

Energy Efficiency Rating		Current	Potential
Very energy efficient - lower running costs			
(92 plus)	A		
(81-91)	B		81
(69-80)	C	70	
(55-68)	D		
(39-54)	E		
(21-38)	F		
(1-20)	G		
Not energy efficient - higher running costs			
England & Wales		EU Directive 2002/91/EC	