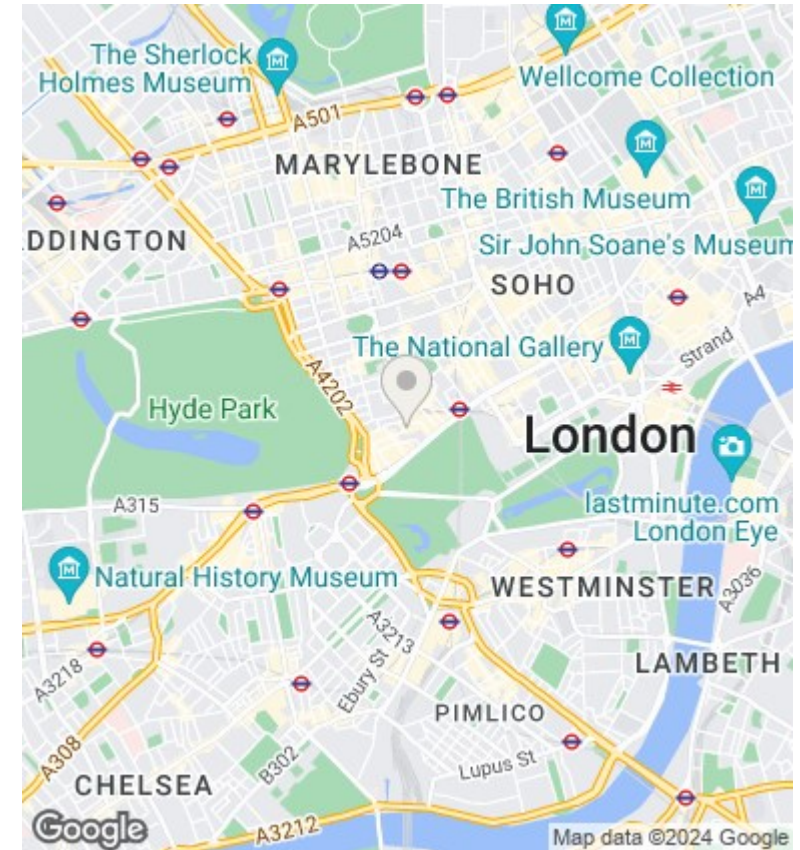
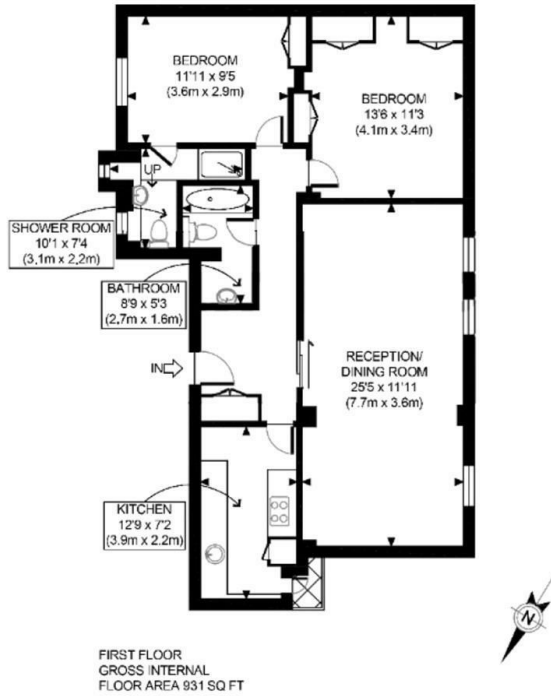




## Hertford Street, Mayfair, London W1J

Asking Price £1,650,000

- 24 Hour Porters
- Communal Car Parking
- Views toward Hyde Park
- Close to Green Park Station
- 2 Bedrooms, 2 Bathrooms
- High Ceiling
- Prime location in Mayfair
- Two Lifts
- Bright with natural light
- Close to prime shopping, dining and nightlife destinations



## Directions

## Viewings

Viewings by arrangement only. Call 02070990800 to make an appointment.

## Council Tax Band

G

## EPC Rating:

C

Energy Efficiency Rating		
	Current	Potential
<i>Very energy efficient - lower running costs</i>		
(92 plus) <b>A</b>		
(81-91) <b>B</b>		
(69-80) <b>C</b>	76	84
(55-68) <b>D</b>		
(39-54) <b>E</b>		
(21-38) <b>F</b>		
(1-20) <b>G</b>		
<i>Not energy efficient - higher running costs</i>		
<b>England &amp; Wales</b>	EU Directive 2002/91/EC	