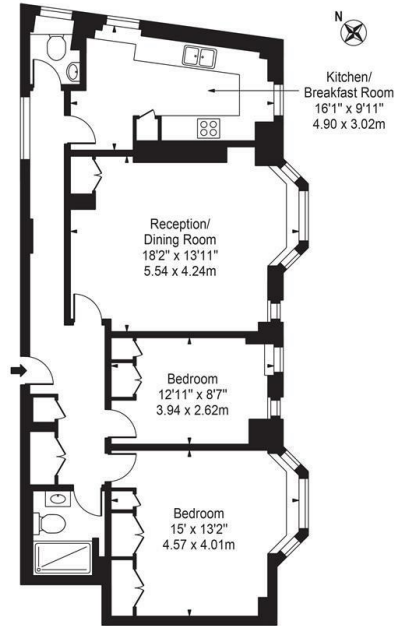


Princes Court, Brompton Road, London SW3

Price Guide £950,000

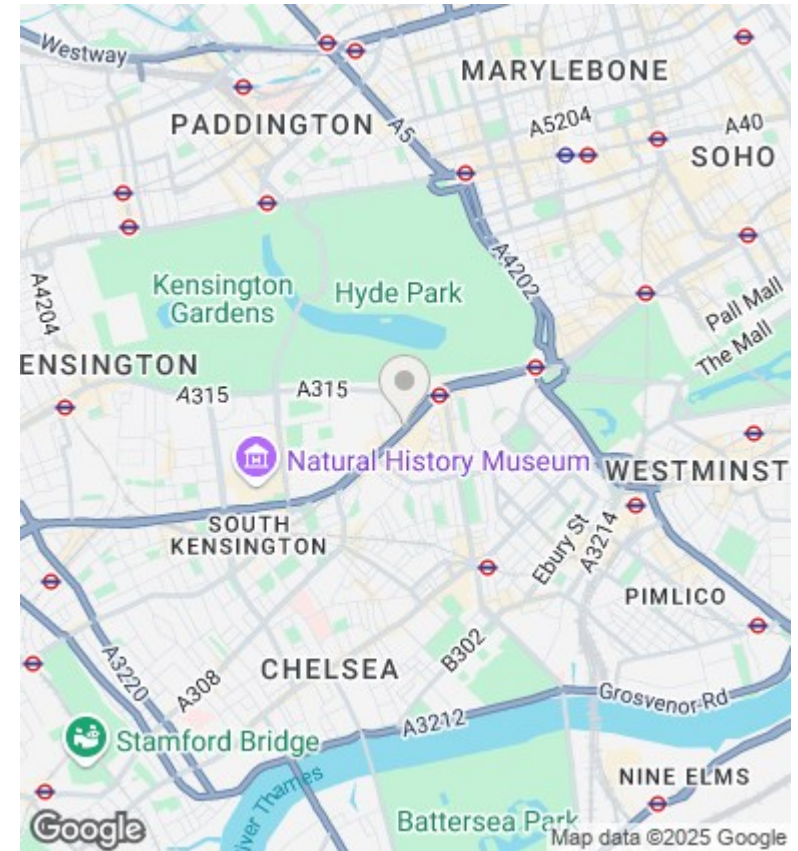
- Great investment opportunity located opposite Harrods
- Bathroom & guest cloakroom
- Short walk to Hyde Park
- Two bedroom apartment
- 24 hour porter & security
- Close to Knightsbridge underground station
- Seperate kitchen
- Communal heating and hot water included in the service charge

Princes Court
 Approx. Gross Internal Area 887 Sq Ft - 82.41 Sq M



Fifth Floor
 For Illustration Purposes Only - Not To Scale

This floor plan should be used as a general outline for guidance only and does not constitute in whole or in part an offer or contract. Any intending purchaser or lessee should satisfy themselves by inspection, searches, enquiries and full survey as to the correctness of each statement. Any areas, measurements or distances quoted are approximate and should not be used to value a property or be the basis of any sale or let.



Directions

Viewings

Viewings by arrangement only. Call 02070990800 to make an appointment.

Council Tax Band

G

EPC Rating:

C

Energy Efficiency Rating		Current	Potential
<i>Very energy efficient - lower running costs</i>			
(92 plus) A			
(81-91) B			
(69-80) C		74	82
(55-68) D			
(39-54) E			
(21-38) F			
(1-20) G			
<i>Not energy efficient - higher running costs</i>			
England & Wales		EU Directive 2002/91/EC	