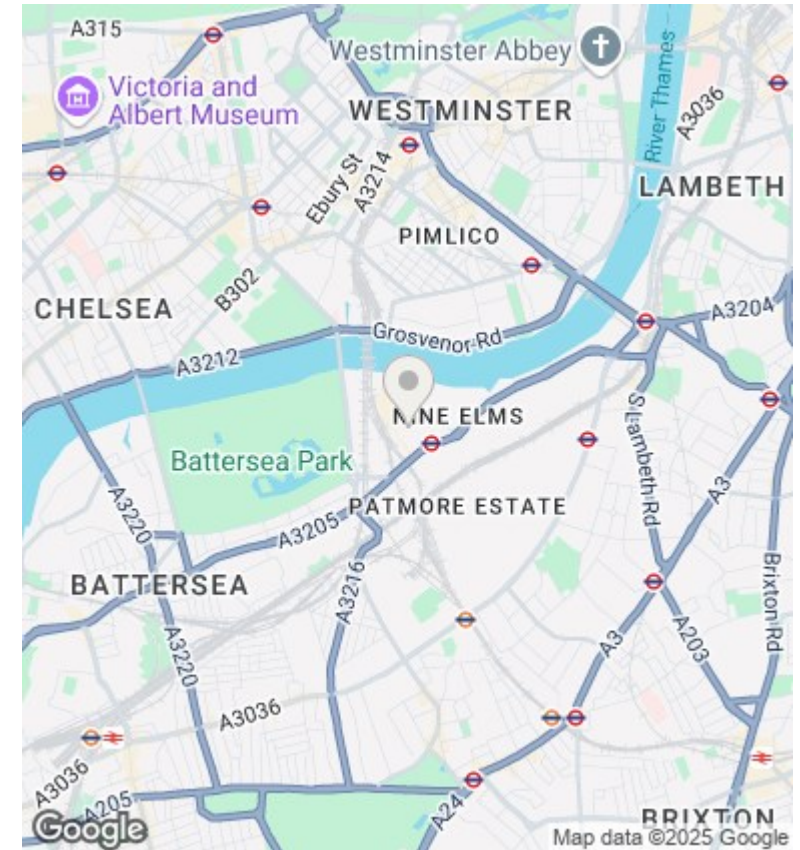
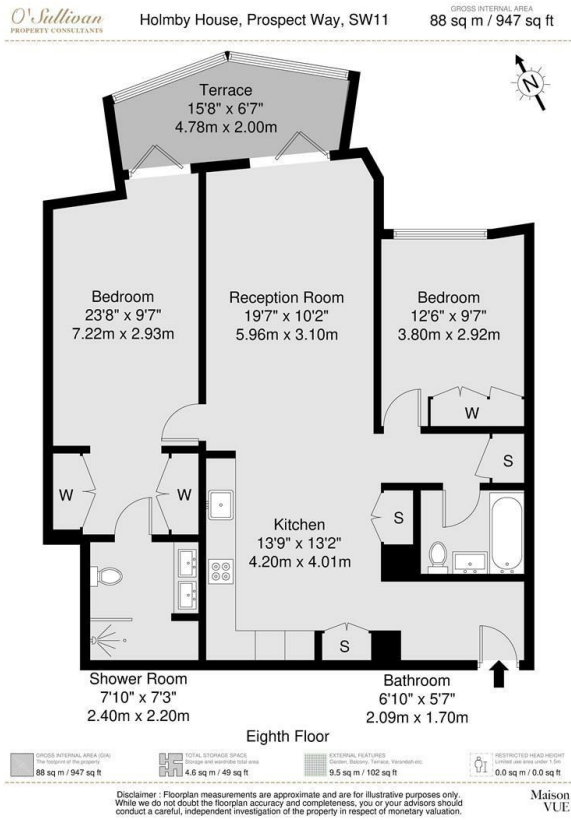


Holmby House, Prospect Way, Battersea Power Station, London

Asking Price £1,590,000

- 2 bedroom / 2 bathroom (1 Ensuite)
- 8th Floor with stunning views
- Communal Gardens
- Swimming Pool & SPA
- 947 sqft Internal Space + 49 sqft Storage Space +102 sqft Winter Garden (1,098 sqft total)
- Comfort cooling and Underfloor heating
- 24 hrs Concierge
- Riverside Location
- Winter Garden
- Residents Gym



Directions

Viewings

Viewings by arrangement only. Call 02070990800 to make an appointment.

Council Tax Band

G

EPC Rating:

B

Energy Efficiency Rating		
	Current	Potential
Very energy efficient - lower running costs		
(92 plus) A		
(81-91) B	86	86
(69-80) C		
(55-68) D		
(39-54) E		
(21-38) F		
(1-20) G		
Not energy efficient - higher running costs		
England & Wales	EU Directive 2002/91/EC	