



## Flat 2, 22 Mount Street, London, W1K 2RW

Asking Price £9,995,000

- Exquisite Duplex on Mount Street, Mayfair
- Walk-in Wardrobe
- Prime Central London's Location
- 4 Double Bedrooms
- 4 Reception Rooms
- Close to private member clubs like Scott's and Annabel's, five-star hotels and Michelin starred restaurants
- 3 Bathrooms (2 Ensuite) plus Cloakroom
- Laundry Room
- Short walk to Hyde Park

# Flat 2, 22 Mount Street, London W1K 2RW

A Rare Gem in Mayfair: Exquisite Duplex on Mount Street

A once-in-a-lifetime opportunity to acquire one of the largest and most prestigious apartments ever to grace Mount Street in Mayfair. This extraordinary duplex, spanning an impressive 3,886 sqft, offers a seamless blend of classic elegance and modern luxury, and occupies two meticulously designed floors of a historic terracotta building.

Nestled in the prestigious area of Mayfair, London, this exquisite period apartment on Mount Street offers a remarkable blend of elegance and spacious living. Spanning an impressive 3,886 square feet, this residence is perfect for those seeking both comfort and sophistication in one of the city's most sought-after locations.



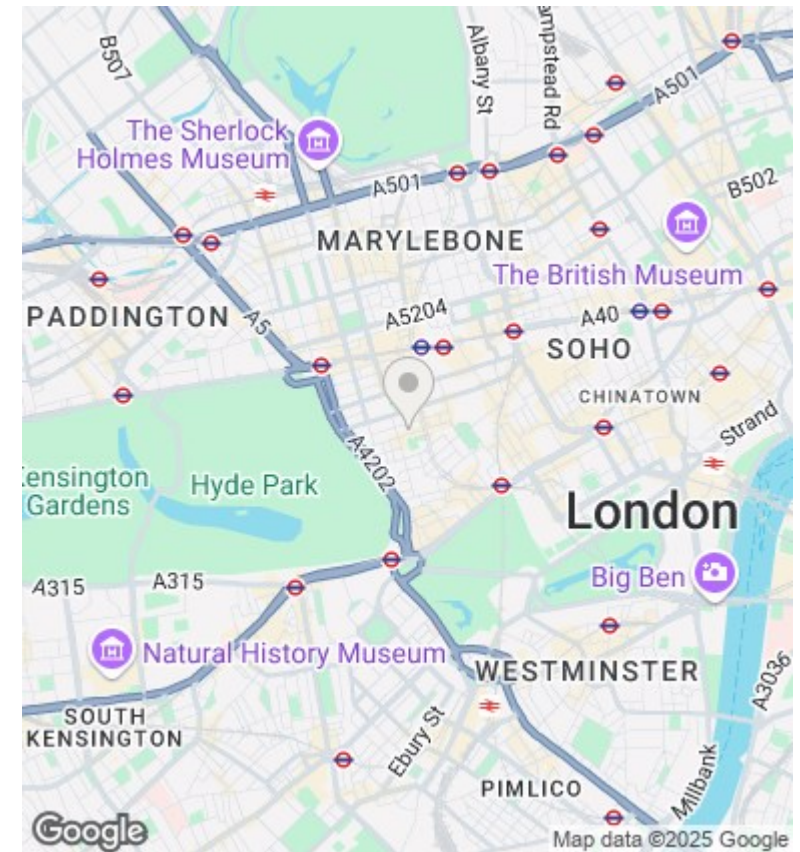
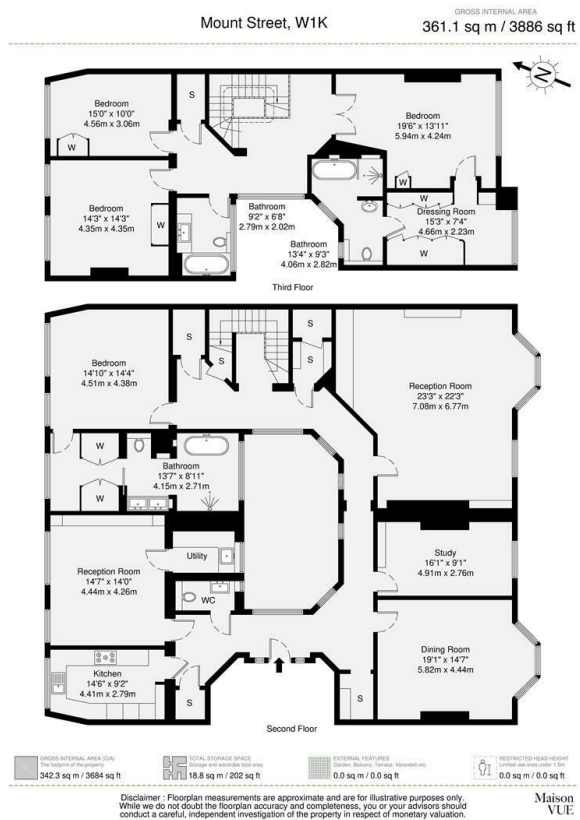
Council Tax Band: H











## Directions

## Viewings

Viewings by arrangement only. Call 02070990800 to make an appointment.

## Council Tax Band

H

Energy Efficiency Rating		
	Current	Potential
<i>Very energy efficient - lower running costs</i>		
(92 plus) <b>A</b>		
(81-91) <b>B</b>		
(69-80) <b>C</b>	73	80
(55-68) <b>D</b>		
(39-54) <b>E</b>		
(21-38) <b>F</b>		
(1-20) <b>G</b>		
<i>Not energy efficient - higher running costs</i>		
<b>England &amp; Wales</b>	EU Directive 2002/91/EC	