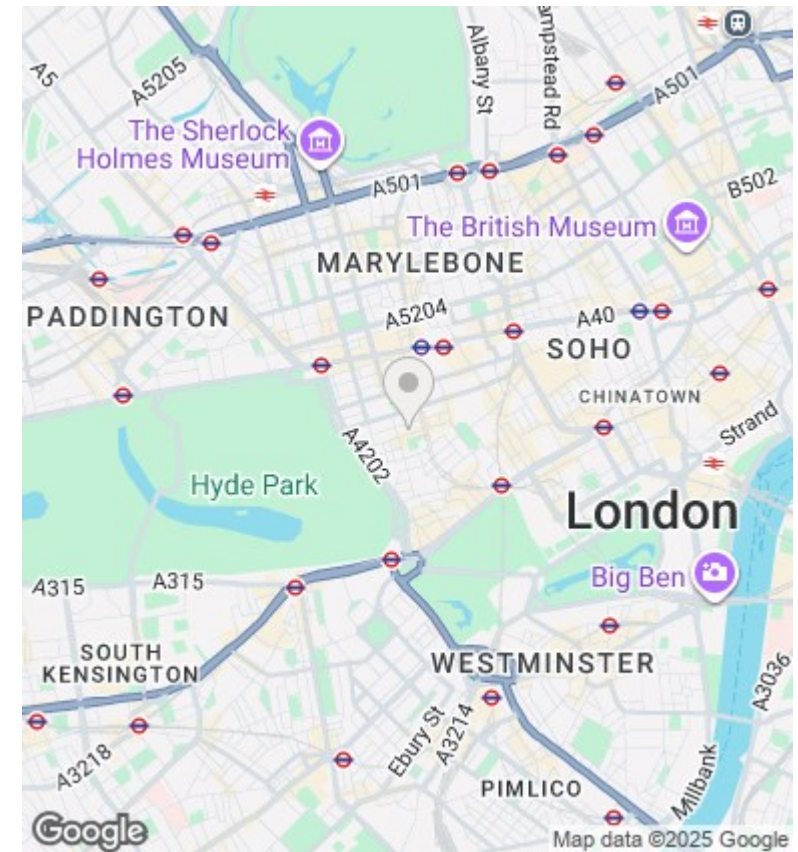
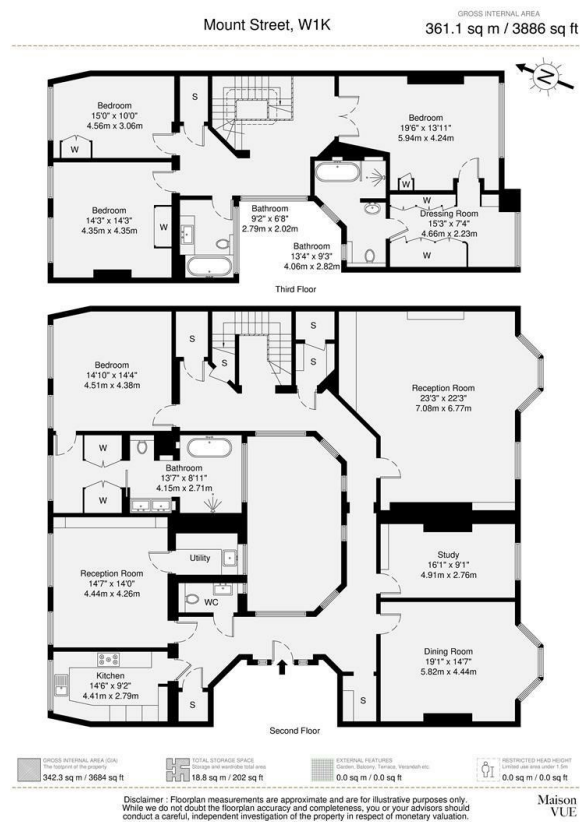




Mount Street, Mayfair, London W1K

Asking Price £9,995,000

- Exquisite Duplex on Mount Street, Mayfair
- Walk-in Wardrobe
- Prime Central London's Location
- 4 Double Bedrooms
- 4 Reception Rooms
- Close to private member clubs like Scott's and Annabel's, five-star hotels and Michelin starred restaurants
- 3 Bathrooms (2 Ensuite) plus Cloakroom
- Laundry Room
- Short walk to Hyde Park



Directions

Viewings

Viewings by arrangement only. Call 02070990800 to make an appointment.

Council Tax Band

H

EPC Rating:

C

Energy Efficiency Rating		
	Current	Potential
Very energy efficient - lower running costs		
(92 plus) A		
(81-91) B		
(69-80) C	73	80
(55-68) D		
(39-54) E		
(21-38) F		
(1-20) G		
Not energy efficient - higher running costs		
England & Wales	EU Directive 2002/91/EC	