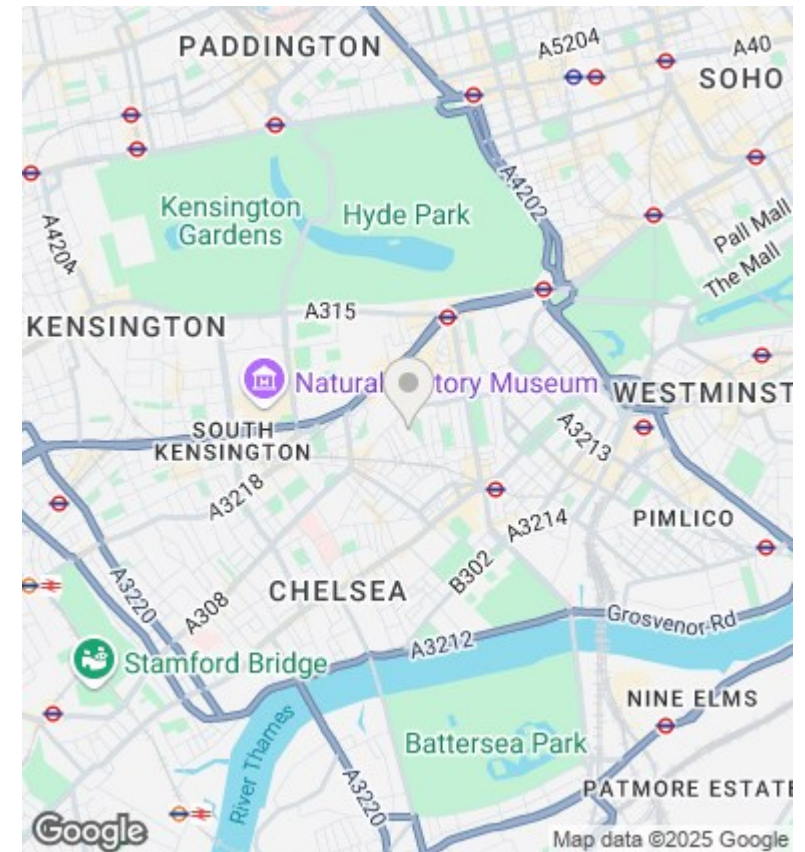
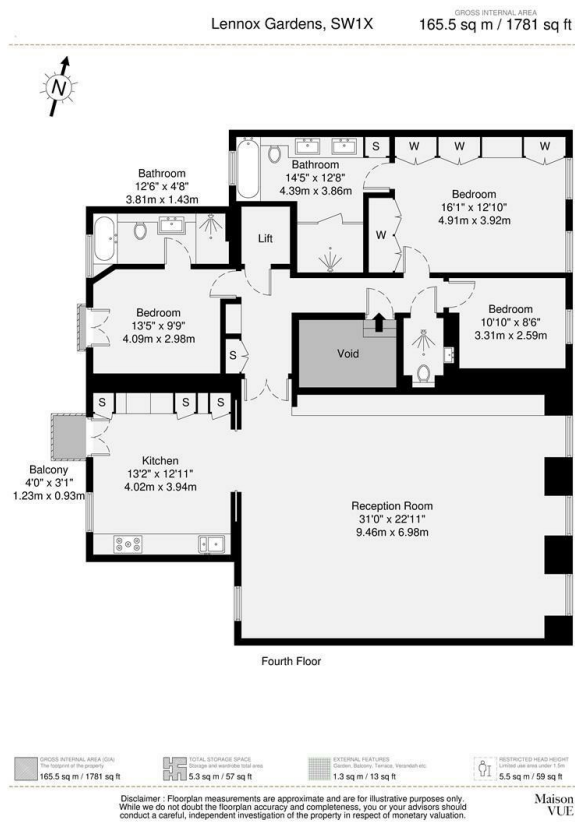




Lennox Gardens, Chelsea, London SW1X

Asking Price £4,999,950

- 3 Bedroom with 2 Ensuite Bathroom
- Guest WC
- Long Leasehold
- Direct Lift Access
- Large Kitchen with Balcony
- Walking distance to Harrods and Knightsbridge's shops and restaurants
- Large Reception Room
- Air Conditioning & Underfloor Heating
- Short walk to Knightsbridge station and Sloane Square station



Directions

Viewings

Viewings by arrangement only. Call 02070990800 to make an appointment.

Council Tax Band

H

EPC Rating:

C

