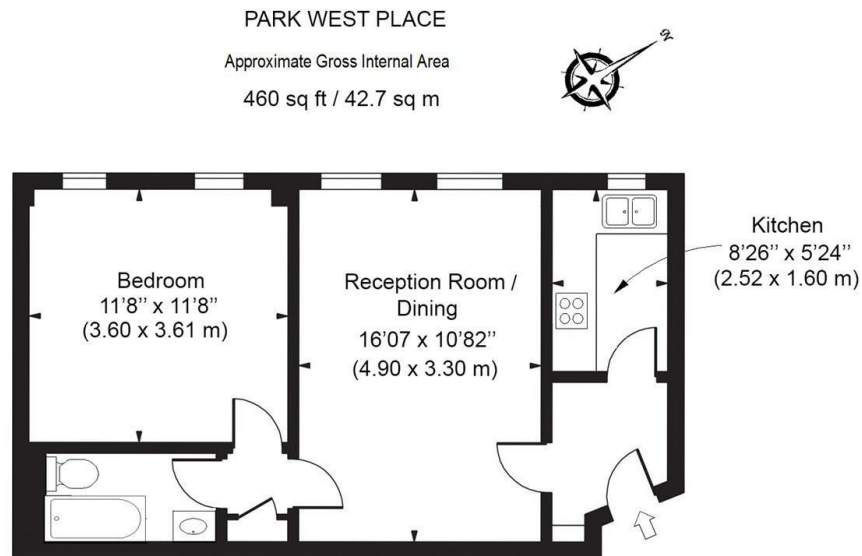




## Park West, Edgware Road, London W2

£2,400 Per Month

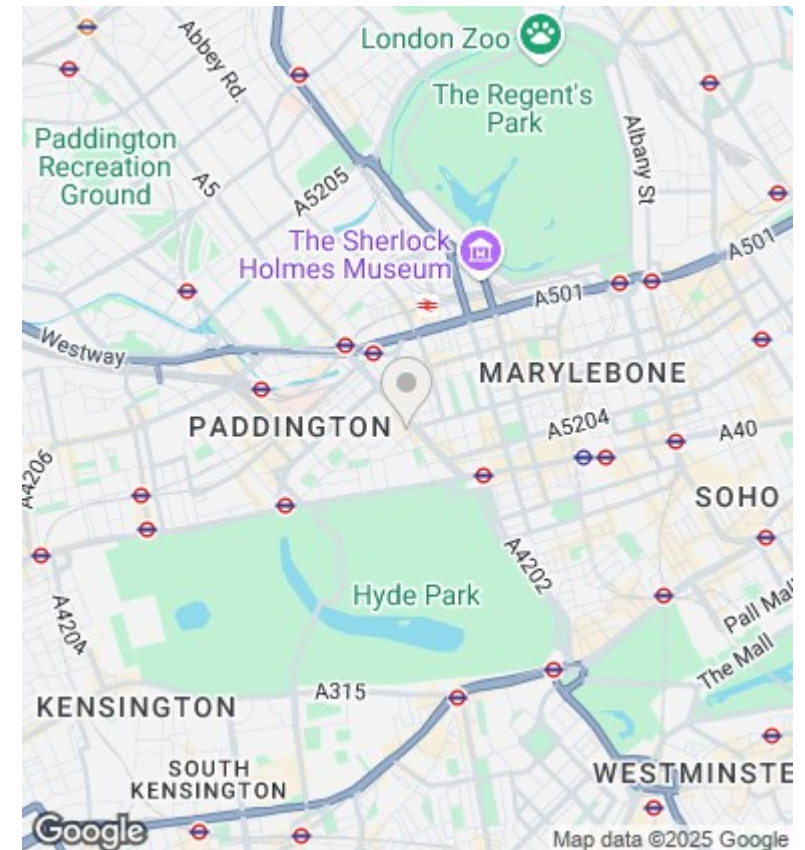
- Large 1 Bedroom Flat
- 24 hrs Porter
- Close to Hyde Park
- Bright open plan reception
- Long Leasehold
- Close to Marble Arch and Oxford Street
- Arranged on the 8th floor
- Short walk to Edgware Road & Marble Arch Underground Stations



8 TH FLOOR

ILLUSTRATION FOR IDENTIFICATION PURPOSES ONLY

ALL MEASUREMENTS ARE MAXIMUM, AND INCLUDE WINDOW BAYS AND WARDROBES WHERE APPLICABLE  
THIS PLAN MUST NOT BE REPRODUCED BY ANY OTHER PERSON WITHOUT PERMISSION



## Directions

## Viewings

Viewings by arrangement only. Call 02070990800 to make an appointment.

## Council Tax Band

D

## EPC Rating:

D

Energy Efficiency Rating		
	Current	Potential
Very energy efficient - lower running costs		
(92-plus) A		
(81-91) B		
(69-80) C		79
(55-68) D	55	
(39-54) E		
(21-38) F		
(1-20) G		
Not energy efficient - higher running costs		
England & Wales		EU Directive 2002/91/EC