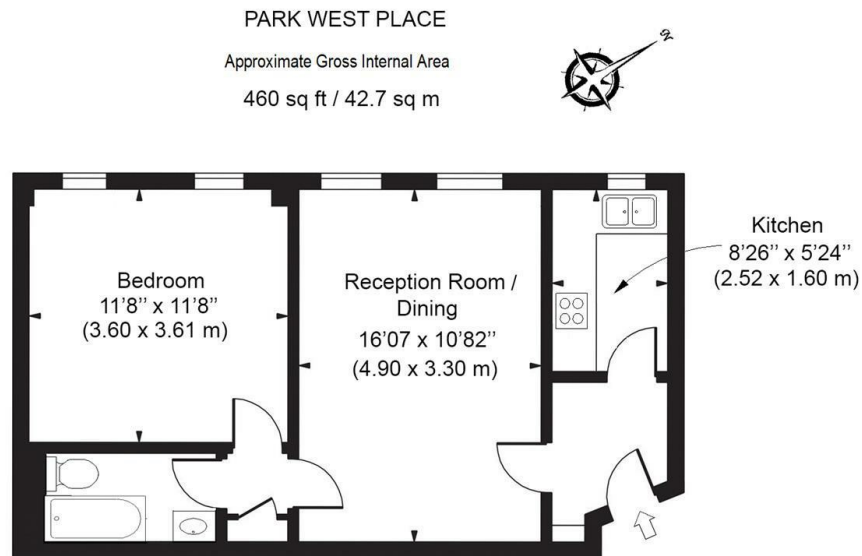




Park West, Edgware Road, London W2

£2,400 Per Month

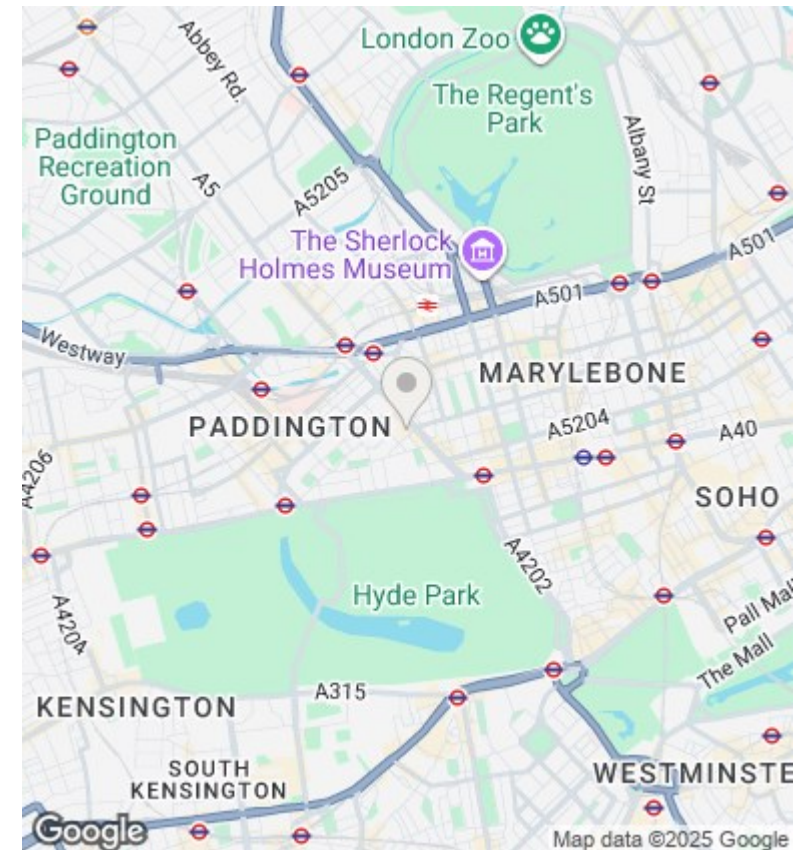
- Large 1 Bedroom Flat
- 24 hrs Porter
- Close to Hyde Park
- Bright open plan reception
- Long Leasehold
- Close to Marble Arch and Oxford Street
- Arranged on the 8th floor
- Short walk to Edgware Road & Marble Arch Underground Stations



8 TH FLOOR

ILLUSTRATION FOR IDENTIFICATION PURPOSES ONLY

ALL MEASUREMENTS ARE MAXIMUM, AND INCLUDE WINDOW BAYS AND WARDROBES WHERE APPLICABLE
THIS PLAN MUST NOT BE REPRODUCED BY ANY OTHER PERSON WITHOUT PERMISSION



Directions

Viewings

Viewings by arrangement only. Call 02070990800 to make an appointment.

Council Tax Band

D

EPC Rating:

D

Energy Efficiency Rating		
	Current	Potential
Very energy efficient - lower running costs		
(92-plus) A		
(81-91) B		
(69-80) C		79
(55-68) D	55	
(39-54) E		
(21-38) F		
(1-20) G		
Not energy efficient - higher running costs		
England & Wales		EU Directive 2002/91/EC