

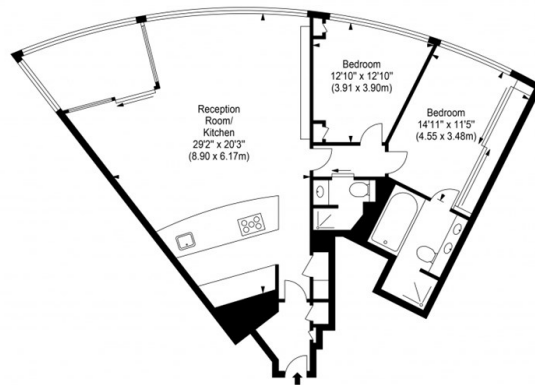
The Tower, St. George Wharf, London SW8

Price Guide £1,100,000

- 2 Bedrooms
- Reception
- Leisure Facilities
- EPC Rating B
- Bathroom
- Open Plan Kitchen
- Concierge
- Shower Room
- Sky Garden
- Communal Business Lounge

St. George Wharf, London, SW8 2D

Approx. Gross Internal Area 1145 sq ft - 106.39 sq m



Ref:
 Disclaimer: Floor plan measurements are approximate and are for illustrative purposes only. While we do not doubt the floor plan accuracy and completeness, you or your advisors should conduct a careful, independent investigation of the property in respect of monetary valuation.

Copyright THE BLEUPLAN

Directions

Viewings

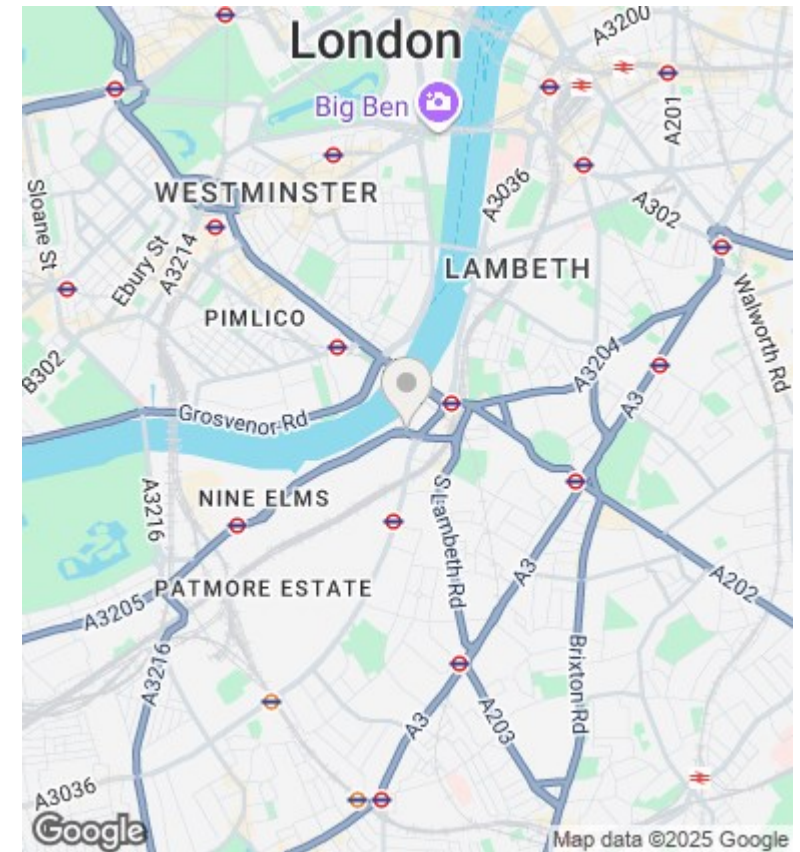
Viewings by arrangement only. Call 02070990800 to make an appointment.

Council Tax Band

H

EPC Rating:

B



Energy Efficiency Rating

	Current	Potential
<i>Very energy efficient - lower running costs</i>		
(92 plus) A		
(81-91) B	82	83
(69-80) C		
(55-68) D		
(39-54) E		
(21-38) F		
(1-20) G		
<i>Not energy efficient - higher running costs</i>		
England & Wales	EU Directive 2002/91/EC	