

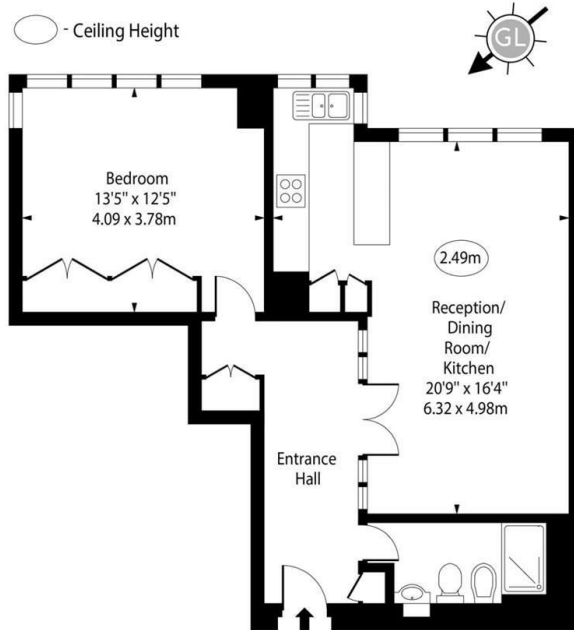


## 150, Quadrangle Tower, Cambridge Square, London, W2 2PL

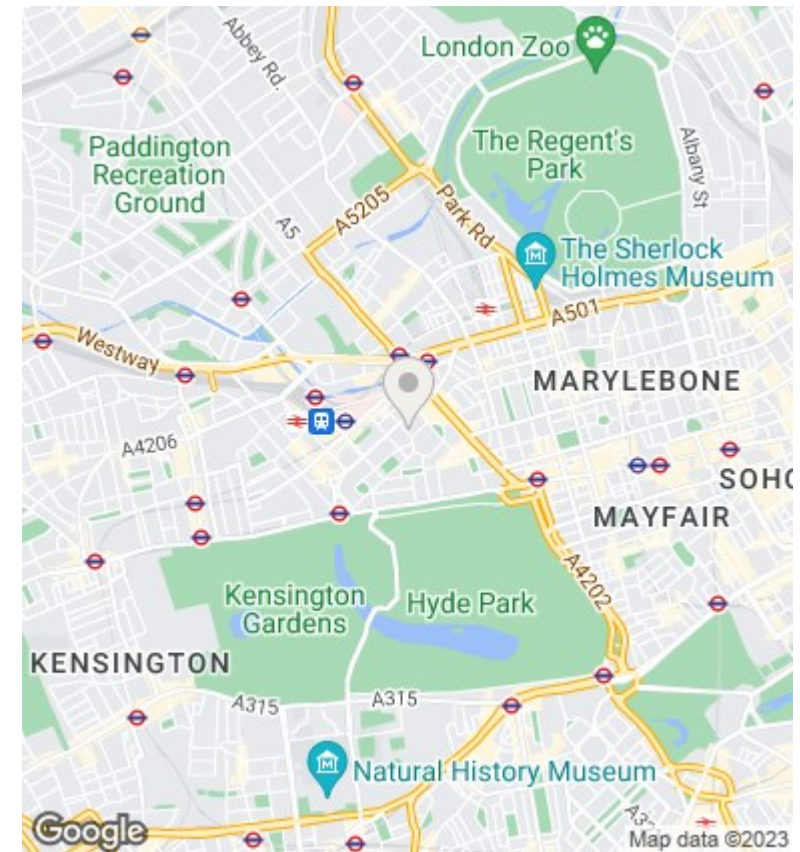
Asking Price £650,000

- Large reception room
- Communal Garden
- 24 hour Concierge
- Good-sized bedroom
- Walking distance to Hyde Park
- South-East facing
- Lift
- 8th Floor
- Close to Underground station

Quadrangle Tower,  
Cambridge Square, W2



Eighth Floor  
Approx Gross Internal Area 635 Sq Ft - 58.99 Sq M  
For Illustration Purposes Only - Not To Scale



Directions

Viewings

Viewings by arrangement only. Call 02070990800 to make an appointment.

Council Tax Band

F

EPC Rating:

Energy Efficiency Rating		
	Current	Potential
<i>Very energy efficient - lower running costs</i>		
(92 plus) <b>A</b>		
(81-91) <b>B</b>		
(69-80) <b>C</b>		
(55-68) <b>D</b>		
(39-54) <b>E</b>		
(21-38) <b>F</b>		
(1-20) <b>G</b>		
<i>Not energy efficient - higher running costs</i>		
<b>England &amp; Wales</b>	EU Directive 2002/91/EC	