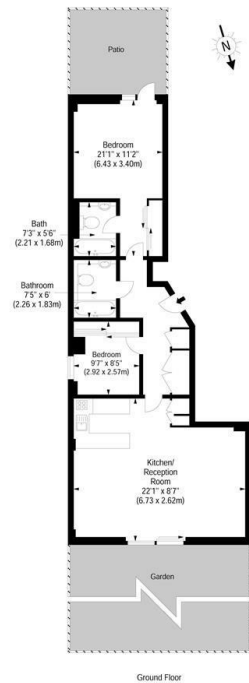


Claydon House, Chelsea Waterfront

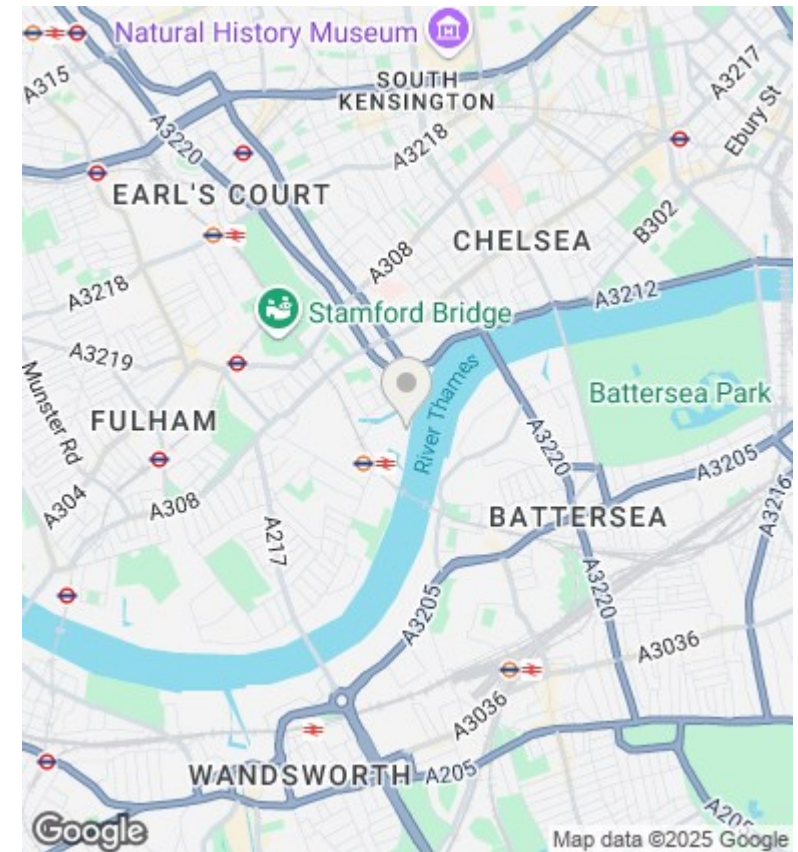
Asking Price £1,700,000

- Master Bedroom
- Open Plan Kitchen
- Patio
- Study/Guest bedroom
- 24 Hour Concierge
- Residents Gym
- Reception
- Garden
- Cats allowed

Claydon House, Waterfront Drive, London SW10 0DD
 Approximate Gross Internal Area 847 sq ft / 78.69 sq m



Ref Copyright THEBLUEPLAN
 Disclaimer: Floor plan measurements are approximate and are for illustrative purposes only. While we do not doubt the floor plan accuracy and completeness, you or your advisors should conduct a careful, independent investigation of the property in respect of monetary valuation.



Directions

Viewings

Viewings by arrangement only. Call 02070990800 to make an appointment.

Council Tax Band

H

EPC Rating:

C

Energy Efficiency Rating		
	Current	Potential
Very energy efficient - lower running costs		
(92 plus) A		
(81-91) B	79	79
(69-80) C		
(55-68) D		
(39-54) E		
(21-38) F		
(1-20) G		
Not energy efficient - higher running costs		
England & Wales	EU Directive 2002/91/EC	