



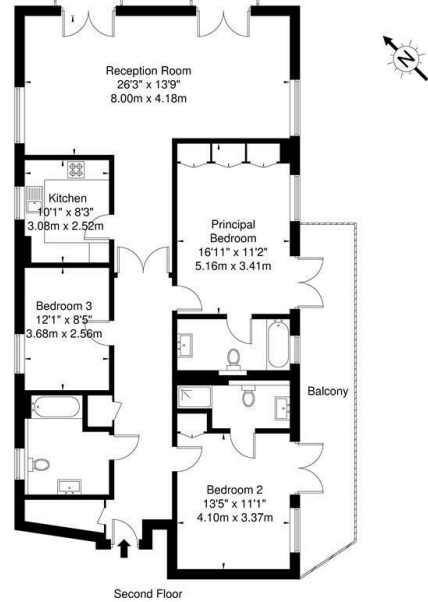
## 214 Westminster Green, 8 Dean Ryle Street, London, SW1P 4DA

Asking Price £1,600,000

- Stunning 3 Bedroom Apartment
- Secure Underground Parking Space
- Very good condition
- 3 Bathrooms (2 En-Suite)
- 24 Hour Concierge, Residents Meeting Rooms & Gymnasium
- Separate kitchen
- 1401sq.ft (130sq.m)
- Second Floor
- Walking Distance to St James's Park & Westminster Tube Links

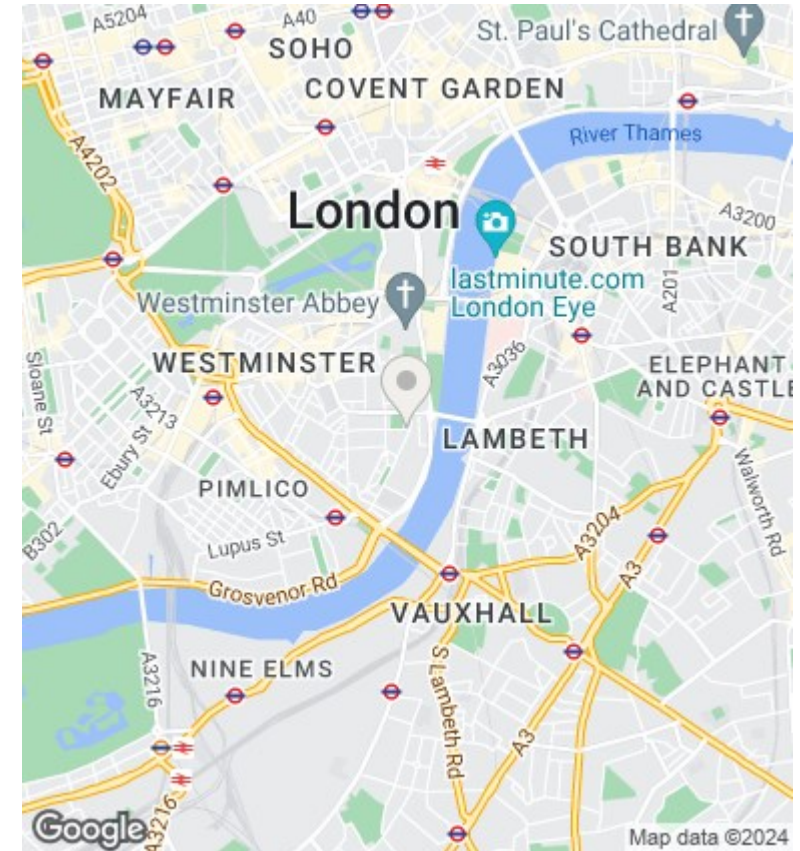
## Westminster Green Dean Ryle Street SW1P 4DA

Approx Gross Internal Area = 127.9 sq m / 1376 sq ft



Ref Copyright BLEUPLAN

The Floor plan is not to scale and measurements and areas shown are approximate and therefore should be used for illustrative purposes only. The plan has been prepared in accordance with the RICS code of Measuring Practice and whilst we have confidence in the information produced it must not be relied on. If there is any aspect of particular importance, you should carry out or commission your own inspection of the property.  
Copyright © BLEUPLAN



## Directions

## Viewings

Viewings by arrangement only. Call 02070990800 to make an appointment.

## Council Tax Band

G

## EPC Rating:

Energy Efficiency Rating		Current	Potential
<i>Very energy efficient - lower running costs</i>			
(92 plus) <b>A</b>			
(81-91) <b>B</b>			
(69-80) <b>C</b>			
(55-68) <b>D</b>			
(39-54) <b>E</b>			
(21-38) <b>F</b>			
(1-20) <b>G</b>			
<i>Not energy efficient - higher running costs</i>			
<b>England &amp; Wales</b>		EU Directive 2002/91/EC	