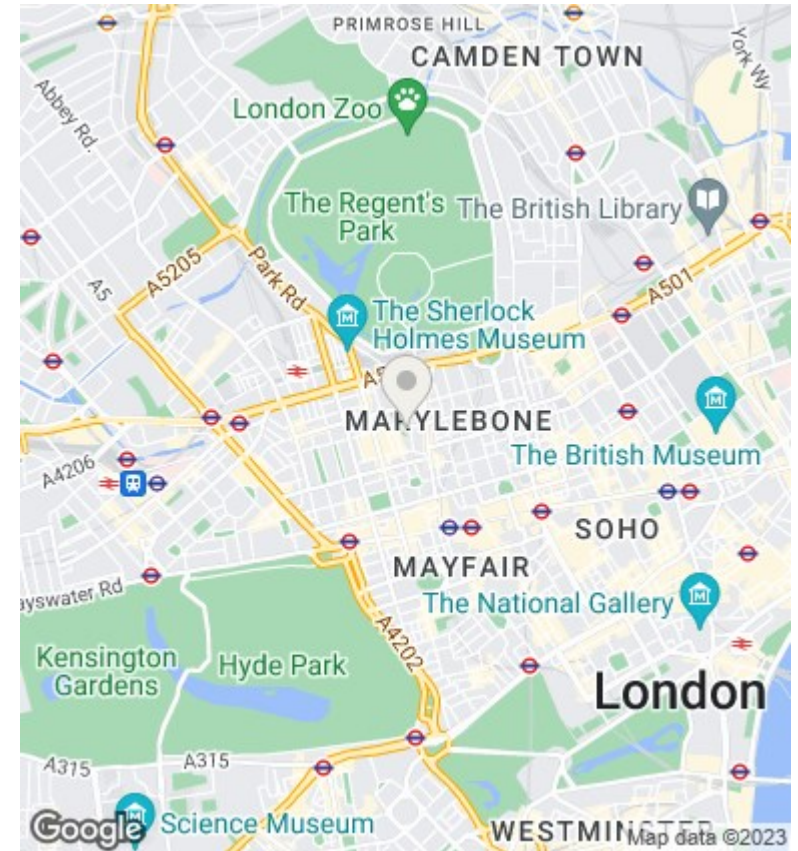
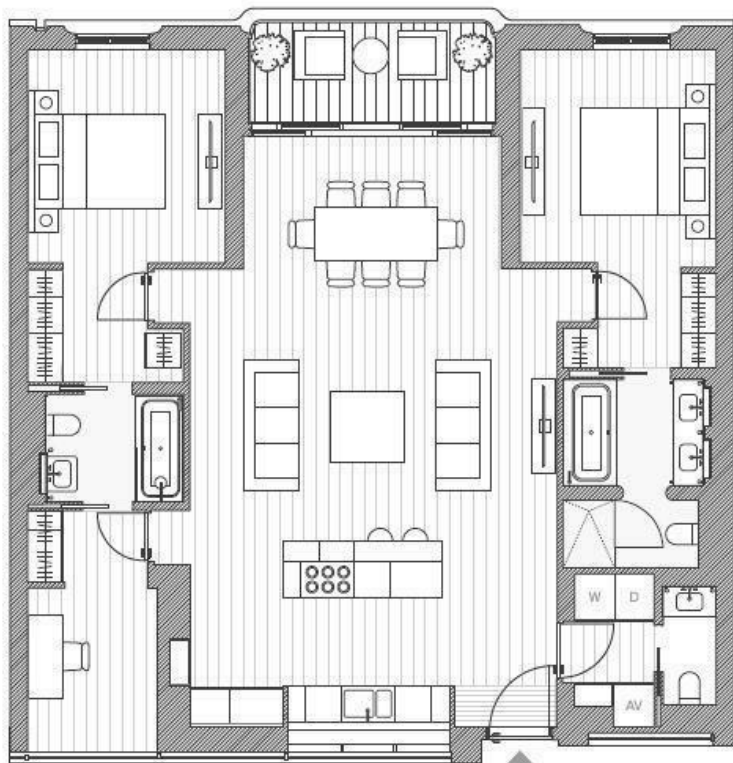




A105 Marylebone Square, Cramer Street, Marylebone, London,

Asking Price £5,380,000

- Private balcony
- Roof terrace
- Brass and ceramic facade
- Separate study
- Five-storey internal atrium
- Completion due Q1/Q2 2023



Directions

Viewings

Viewings by arrangement only. Call 02070990800 to make an appointment.

Council Tax Band

New Build

EPC Rating:

Energy Efficiency Rating		
	Current	Potential
<i>Very energy efficient - lower running costs</i>		
(92 plus) A		
(81-91) B		
(69-80) C		
(55-68) D		
(39-54) E		
(21-38) F		
(1-20) G		
<i>Not energy efficient - higher running costs</i>		
England & Wales	EU Directive 2002/91/EC	