



## 609 Asquith House (6th Floor), 27 Monck Street, Lo, Monck Street, Asking Price £1,085,000

- 2 Bedroom
- Comfort cooling
- Close to shopping and restaurants
- 2 Bathroom (1 ensuite)
- 24 hour porter
- Close to Westminster tube station
- Balcony
- Secure underground parking
- Long lease 999 years from new

# Monck Street, London SW1P 2AR

An attractive 2 double bedroom, 2 bathroom (1 en-suite) Penthouse apartment located on the 6th floor of this modern development in the heart of Westminster. The property has the benefits of a bright reception room, separate modern integrated kitchen, balcony, comfort cooling, 24 hour porter and secure underground parking.



Council Tax Band: G





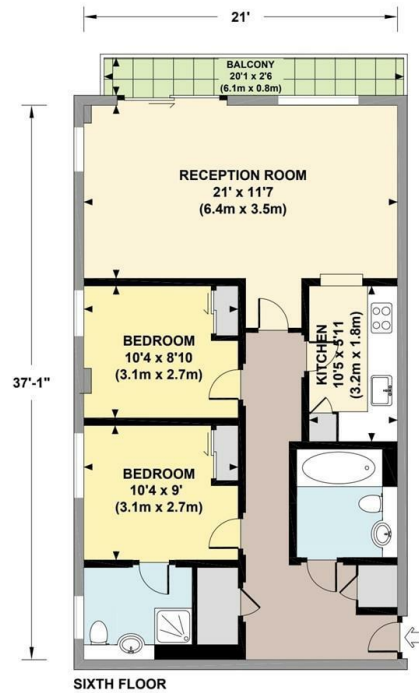






**ASQUITH HOUSE, MONCK STREET, SW1P**

Approx. gross internal area  
778 Sq.Ft. / 72.3 Sq.M.

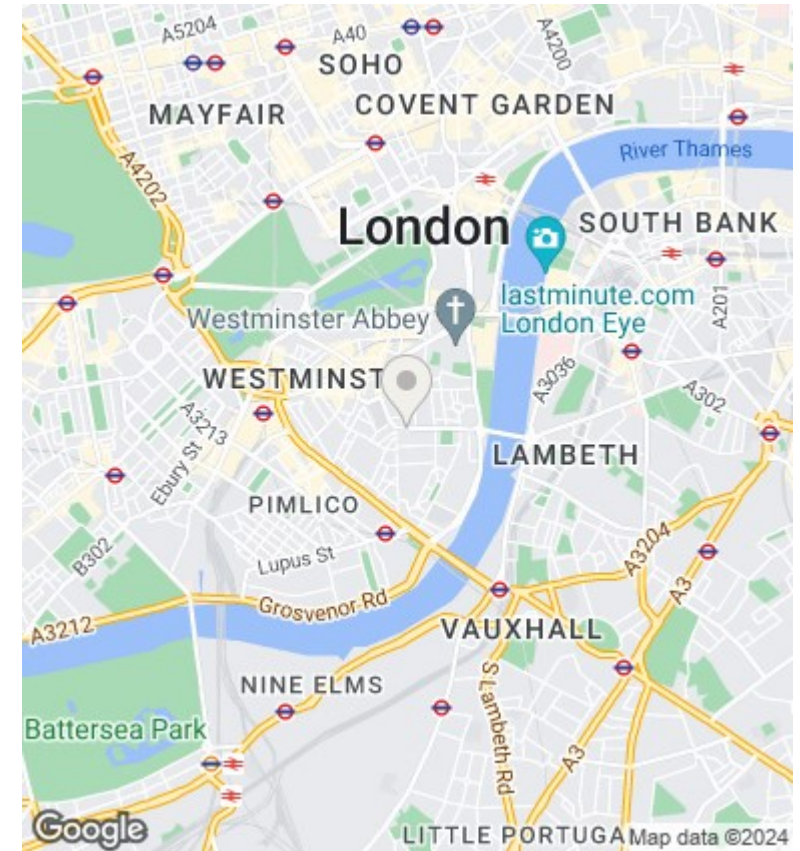


SIXTH FLOOR

All measurements are approximate and for illustration purposes only as indicated by the NICE Code of Measuring Practice (2012). Drawing Lines Design www.drawinglines.com 020 7310 9833



1 / 1



**Directions**

**Viewings**

Viewings by arrangement only. Call 02070990800 to make an appointment.

**Council Tax Band**

G

Energy Efficiency Rating		
	Current	Potential
<i>Very energy efficient - lower running costs</i>		
(92 plus) <b>A</b>		
(81-91) <b>B</b>		
(69-80) <b>C</b>		
(55-68) <b>D</b>		
(39-54) <b>E</b>		
(21-38) <b>F</b>		
(1-20) <b>G</b>		
<i>Not energy efficient - higher running costs</i>		
<b>England &amp; Wales</b>	EU Directive 2002/91/EC	