



Apartment 12, Abbey Court, Rhyl Road, Rhuddlan, Rhyl, LL18 2TZ

£850PCM (Deposit: £950)

🛏 1 🚿 1 🚗 1



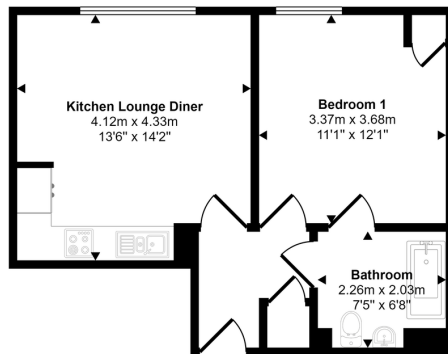
Tax Band: B Furnished: Unfurnished

This modern one-bedroom, one-bathroom apartment in the well-maintained Abbey Court development is available to rent. Featuring an open-plan kitchen, lounge, and dining area, the property offers a comfortable living space with an allocated parking space.





Approx Gross Internal Area
39 sq m / 422 sq ft



Floorplan

This floorplan is only for illustrative purposes and is not to scale. Measurements of rooms, doors, windows, and any items are approximate and no responsibility is taken for any error, omission or mis-statement. Icons of items such as bathroom suites are representations only and may not look like the real items. Made with Made Snappy 360.

Energy Efficiency Rating		Current	Potential
Very energy efficient - lower running costs			
(92 plus)	A		
(81-91)	B		
(69-80)	C		
(55-68)	D		
(39-54)	E		
(21-38)	F		
(1-20)	G		
Not energy efficient - higher running costs			
		81	81
England & Wales		EU Directive 2002/91/EC	

llestates.co.uk

High Street, Rhuddlan LL18 2UA

Important notice: LL Estates. These particulars do not form part of any offer or contract and must not be relied upon as statements or representation of fact. The text, photographs and plans are for guidance only and are not necessarily comprehensive. It should not be assumed that the property has all necessary planning, building regulation or other consents and LL Estates have not tested any services, equipment or facilities. Purchasers must satisfy themselves by inspection or otherwise.

01745 591811
sales@llestates.co.uk