




Rhodfa Ty Tyn, St Asaph , Denbighshire, LL17 0FE

Offers Over £280,000

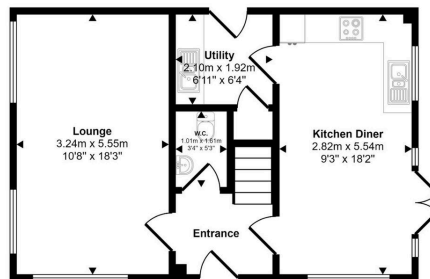
 3  2  2



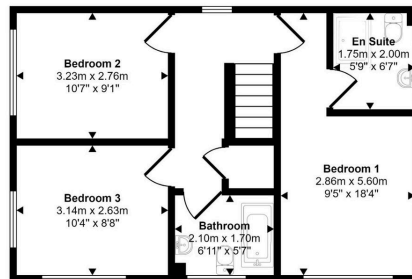
- New development in the popular residential area of St Asaph - Castle Green Development
- Three double bedrooms, main having en suite
- Utility room with door leading to side elevation
- Lawned enclosed garden on corner plot with driveway
- No Forward Chain
- Good sized lounge
- Downstairs cloakroom and storage
- Kitchen/diner and patio doors leading to the enclosed garden
- Beautifully designed throughout
-



Approx Gross Internal Area
94 sq m / 1008 sq ft



Ground Floor
Approx 47 sq m / 504 sq ft



First Floor
Approx 47 sq m / 504 sq ft

This floorplan is only for illustrative purposes and is not to scale. Measurements of rooms, doors, windows, and any items are approximate and no responsibility is taken for any error, omission or mis-statement. Icons of items such as bathroom suites are representations only and may not look like the real items. Made with Made Snappy 360.

Stunning 3-Bedroom House in Rhodfa TY Tyn, St. Asaph - Modern Design, Enclosed Garden. This gorgeous, detached home is ready to move in with no chain! Offering bright rooms, a handy utility room, ensuite bedroom and charming walled gardens, it's ideal for family living. Enjoy a smooth, quick move and settle in with ease to this wonderful property! Call now to arrange a viewing!