

26 Park View, Afonwen

£200,000

3 2 2

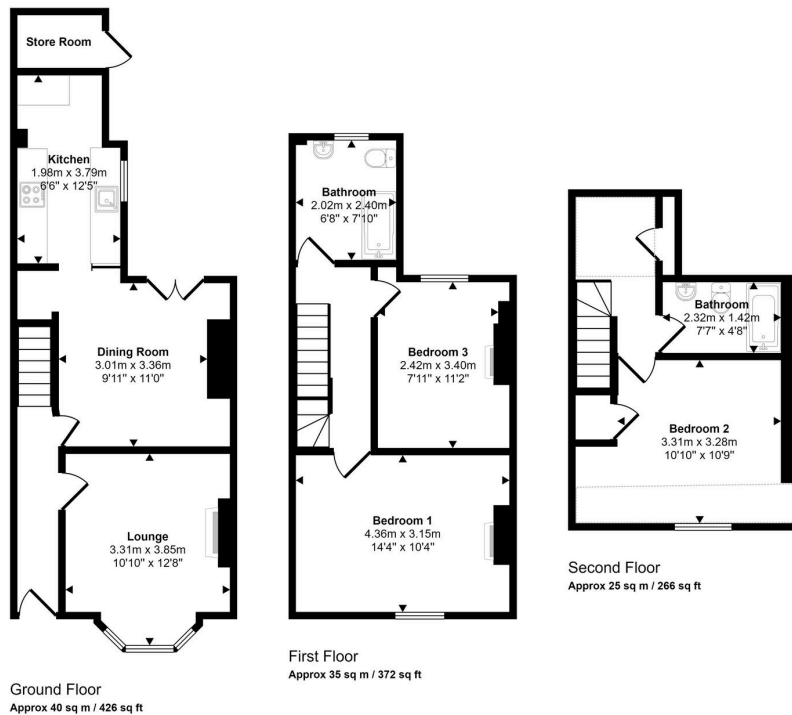


This beautifully restored home is ideal for those seeking a character-filled property with modern comforts in a peaceful, semi-rural setting. Its blend of original features and contemporary finishes offers an idyllic living experience with stunning countryside views and great accessibility.

Key Features

- Three spacious double bedrooms, all featuring original decorative fireplaces
- Lounge with log burner and large bay window with views to the front over open fields
- Country-style kitchen with modern fittings
- Oil-fired central heating throughout
- Semi-rural setting with stunning views and excellent road links to the A55
- Two newly fitted bathroom suites across the first and second floors
- Dining room with open chimneybreast, under stair storage and French doors opening to the enclosed rear yard
- Second floor bedroom with decorative fireplace and storage cupboard
- Enclosed rear yard and garden with parking for two cars
- No forward chain

Approx Gross Internal Area
99 sq m / 1064 sq ft



This floorplan is only for illustrative purposes and is not to scale. Measurements of rooms, doors, windows, and any items are approximate and no responsibility is taken for any error, omission or mis-statement. Icons of items such as bathroom suites are representations only and may not look like the real items. Made with Snappy 360.