



Hulmehurst, Lower Street, St. Asaph

£190,000

🛏️ 2 🚿 1 🪑 2



Charming 2-Bedroom home in St Asaph – Perfect First Home!

Nestled in the heart of St Asaph, this beautifully presented 2-bedroom property is an absolute must view!

The property boasts two spacious reception rooms, including a cosy lounge at the front, which provides a warm and inviting space to relax. To the rear, the dining room offers a bright and airy atmosphere.

The well-appointed kitchen with modern fittings, conveniently located off the dining room, offers ample space and functionality for all your culinary needs the washing machine & fridge freezer are included in the sale. With a door leading out to a private courtyard garden this space is low maintenance and a great spot to sit and relax – Upstairs, you'll find two generously sized double bedrooms, the front bedroom boasting fitted wardrobes and the 2nd double bedroom has a lovely original cast iron fireplace, both rooms provide plenty of room for rest and relaxation. The family bathroom is also located on the first floor, complete with modern fixtures and fittings. This delightful home is presented to the highest standard and is ready to move into, offering a fantastic opportunity for those looking to get onto the property ladder. With its charming features, prime location, and exceptional presentation, this is a property not to be missed.

Parking: On street parking is available to the front of the property.
Gardens: Paved, fully enclosed rear courtyard garden.

Tenure: Freehold

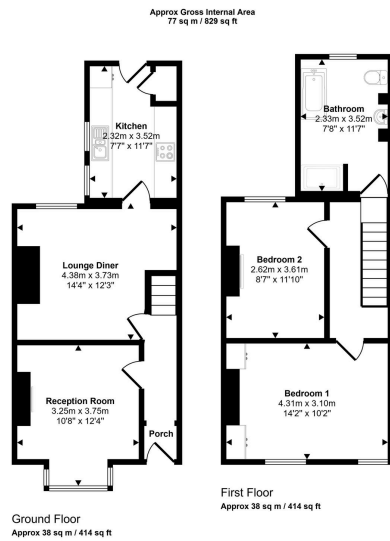
Services: Mains gas, electric, water and drainage.

Boiler: Location in the cupboard in the kitchen.

Loft: Part boarded with pull down ladder.

No Forward Chain





This floorplan is only for illustrative purposes and is not to scale. Measurements of rooms, doors, windows, and any items are approximate and no responsibility is taken for any error, omission or mis-statement. Icons of items such as bathroom suites are representations only and may not look like the real items. Made with Made Snappy 300.

- Beautifully Presented Throughout
- Paved Courtyard Gardens
- Modern Kitchen & Bathroom
- NO FORWARD CHAIN

