

11 Parc Bron Deg, Dyserth, LL18 6BQ

£230,000

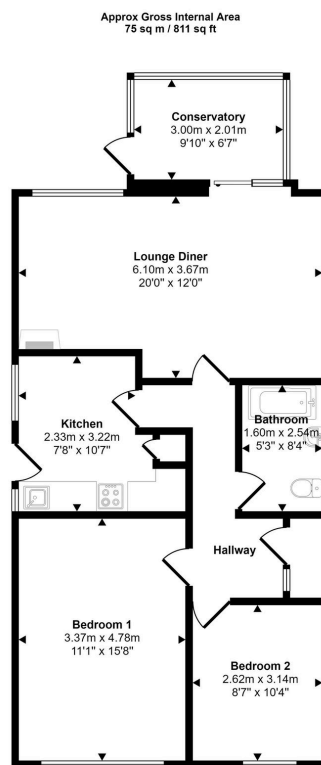
🛏 2 🚿 1 🛋 2



A fantastic 2-bedroom detached bungalow in Dyserth, offering stunning mountain views. The property features a spacious layout with a newly fitted bathroom, open-plan lounge/diner, and a conservatory leading to a well-maintained garden. Private driveway, ample parking, and a converted garage for extra storage!

Key Features

- Detached Bungalow
- Large Lounge With Conservatory Off
- Driveway To The Front With Former Garage- Great Storage!
- EPC Rating D
-
-
- Lovely Position With Views Of The Mountain
- Enclosed Gardens
- Sought After Position
-
-



Floorplan

This floorplan is only for illustrative purposes and is not to scale. Measurements of rooms, doors, windows, and any items are approximate and no responsibility is taken for any error, omission or mis-statement. Icons of items such as bathroom suites are representations only and may not look like the real items. Made with Made Snappy 360.