



Grenville Row, Bodelwyddan

£160,000

3 1 1



Located in a quiet and well-established residential area of Bodelwyddan, this well-presented three-bedroom semi-detached home is perfect for first-time buyers seeking comfort, convenience, and value. With excellent access to the A55, it's an ideal base for commuting across North Wales and beyond.

Inside, the home offers a bright, airy lounge with built-in storage—great for keeping things tidy while maintaining a modern feel. The stylish kitchen features a breakfast bar, a useful storage cupboard, and opens out to a fully enclosed rear garden. Sunny and secure, the garden is ideal for entertaining, relaxing, or letting children play safely. A garden shed adds extra storage.

Upstairs are three comfortable bedrooms and a contemporary bathroom complete with a walk-in shower.

With thoughtful modern touches throughout and a location that blends peaceful living with practical access, this home is move-in ready and full of potential.

Room Measurements:

Hallway: 1.30m x 1.80m

Lounge: 3.80m x 3.53m

Kitchen: 3.83m x 3.08m

Bedroom 1: 2.86m x 3.58m

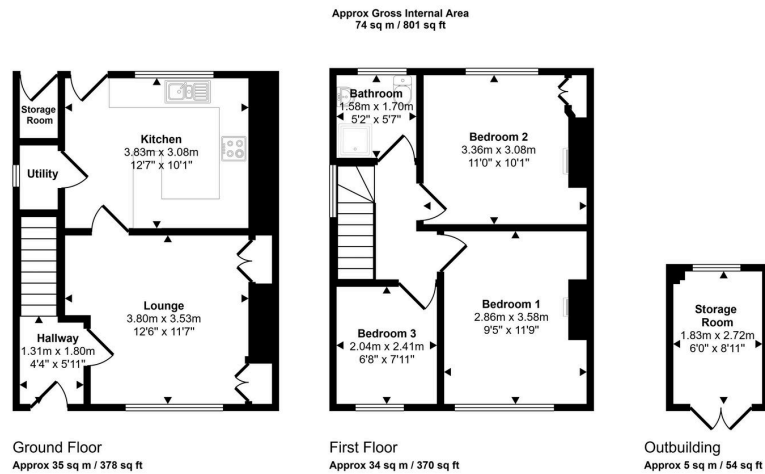
Bedroom 2: 3.36m x 3.08m

Bedroom 3: 2.04m x 2.41m

Bathroom: 1.58m x 1.70m

Tenure: Freehold





This floorplan is only for illustrative purposes and is not to scale. Measurements of rooms, doors, windows, and any items are approximate and no responsibility is taken for any error, omission or mis-statement. Icons of items such as bathroom suites are representations only and may not look like the real items. Made with Made Snappy 360.

- NO CHAIN
- Enclosed Rear Garden
- Three comfortable bedrooms • Modern kitchen with breakfast bar upstairs
- Light-filled lounge with built-in storage