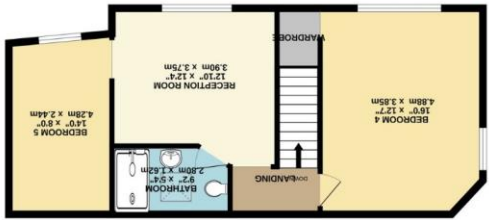




Whist every attempt has been made to ensure the accuracy of the floorplan contained here, measurements of doors, windows, rooms and any other items are approximate and no responsibility is taken for any omission or mis-statement. This plan is for illustrative purposes only and should be used as such by any prospective purchaser. The services, systems and appliances shown have not been tested and no guarantee as to their operability or efficiency can be given.

Made with Metropix ©2025

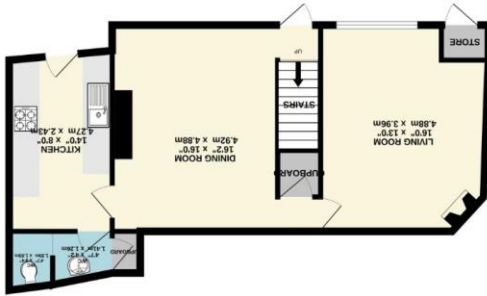
TOTAL FLOOR AREA: 1768 sq.ft. (164.3 sq.m.) approx.



2ND FLOOR
566 sq.ft. (52.6 sq.m.) approx.



1ST FLOOR
604 sq.ft. (56.1 sq.m.) approx.



GROUND FLOOR
598 sq.ft. (55.5 sq.m.) approx.



2 Princess Street, Old Town, Scarborough, North
Yorkshire, YO11 1QR

Harris Shields
Collection

A Grand Georgian Grade II listed 5 Bedroom Townhouse

- ✓ Gorgeous Old Town Location
 - ✓ Georgian Grade II Listed Townhouse
 - ✓ Superb Condition Inside & Out
 - ✓ No Onward Chain
 - ✓ Five Bedrooms
 - ✓ Three Reception Rooms
 - ✓ Three Bathrooms
 - ✓ Arguably The Finest Home In Old Town
- Asking Price £350,000

Harris Shields Collection

Harris Shields Collection, 25 Northway, Scarborough North Yorkshire, YO11 1JH

01723 341557
mail@harris-shieldscollection.uk
<https://harris-shieldscollection.uk/>

Description
Arguably the finest home we've had the pleasure of marketing in this exceptional Old Town Quarter location, just a hop, skip and a jump from Scarborough's South Bay Beach, harbour, and vibrant attractions. This superbly maintained and beautifully presented Georgian Grade II listed townhouse is steeped in charm and character, with sea glimpses from several rooms and an abundance of space across three floors. Currently a successful holiday let, the property offers fantastic investment potential, but would also make an enviable and spacious family home in one of Scarborough's most romantic and historic settings. The ground floor features an impressive entrance into a large dining room, a generously sized living room complete with cosy wood burner, and an attractive galley kitchen with access to the front. There is also a convenient downstairs WC off the kitchen. On the first floor is a stunning dual-aspect master bedroom with en-suite, two additional bedrooms, and a family bathroom. The second floor offers even more versatility with two further bedrooms, an additional reception room (ideal as a lounge, office, or studio), and a second bathroom.

Additional Information

Council tax band



Opening doors
for over 60 years

Harris Shields
Collection