



Oliver James  
ESTATE AGENT



TheNegotiator  
*Awards 2025*  
REGIONAL AGENCY  
OF THE YEAR  
NORTH EAST  
& NORTH WEST

SILVER

SCAN ME



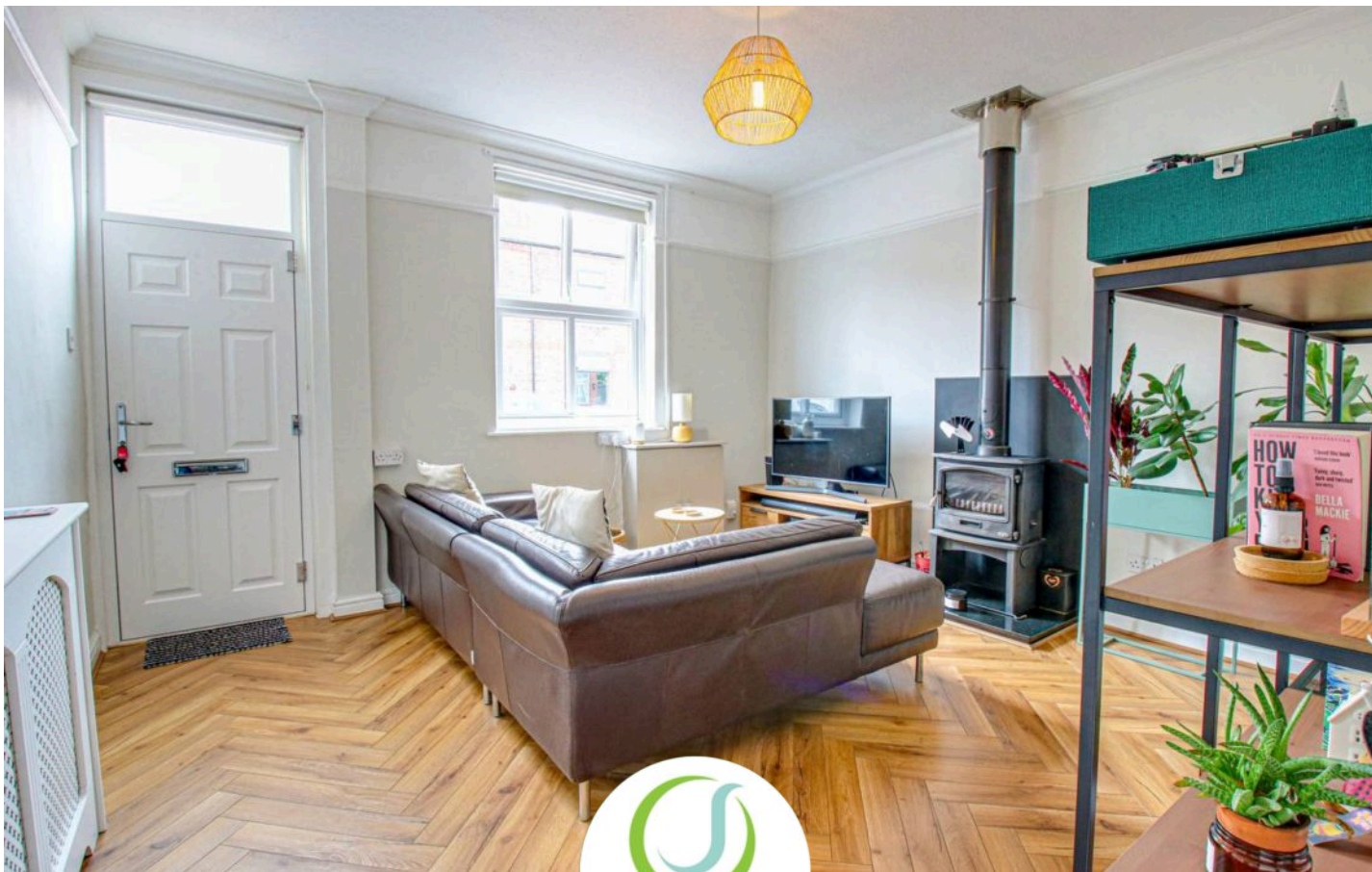
BOOK A VIEWING

 **Oliver James**  
ESTATE AGENT

50 Dean Road, Cadishead

Offers Over £180,000





## 50 Dean Road

Cadishead, Manchester

Be captivated by this stunning terrace house; lounge with log burner, modern kitchen leading to dining area, main bedroom, loft room, luxurious bathroom, rear yard and lawn with patio seating. A perfect place to make lasting memories and call home sweet home.

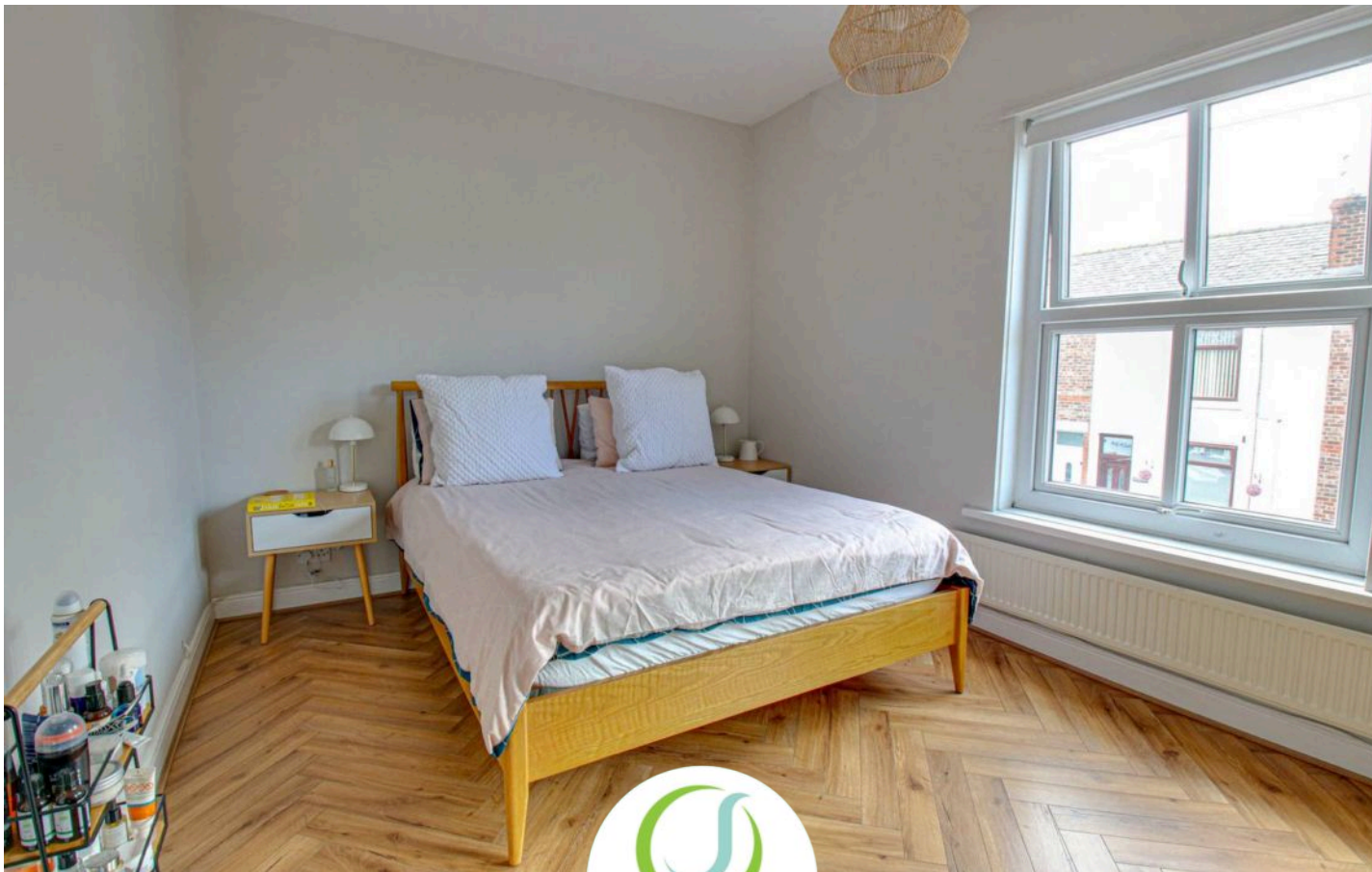
Council Tax band: A

Tenure: Freehold

- Stunning Garden Fronted Terrace
- Two Bedroom PLUS Loft Room
- Lounge with Log Burner
- Herringbone styled flooring
- Modern Navy Blue Kitchen with Dining Area
- Downstairs Utility Room that also serves as a Guest WC
- Large Main Bedroom
- Bedroom Two with Fixed Stairs to Loft Room
- Four Piece Bathroom Suite with Freestanding Bath
- Loft Room with Wooden Flooring, full decor and skylight.
- Two Sections of garden, rear yard then onto larger lawn area with patio seating area







### Lounge

13' 5" x 13' 1" (4.10m x 4.00m)

Front facing upvc double glazed window, dual fuel log burner, coving, herringbone flooring and radiator.

### Kitchen

9' 6" x 13' 1" (2.90m x 4.00m)

Rear facing upvc double glazed window, fitted range of base and wall units with granite work surfaces, belfast style sink, rangemaster oven, integral fridge and freezer, dishwasher. Tiled floor and radiator.

### Utility/ WC

5' 11" x 5' 7" (1.80m x 1.70m)

Side facing upvc double glazed window, low flush WC, wash basin, plumbed for washer, wall mounted Worcester boiler. Tiled floor.

### Bedroom One

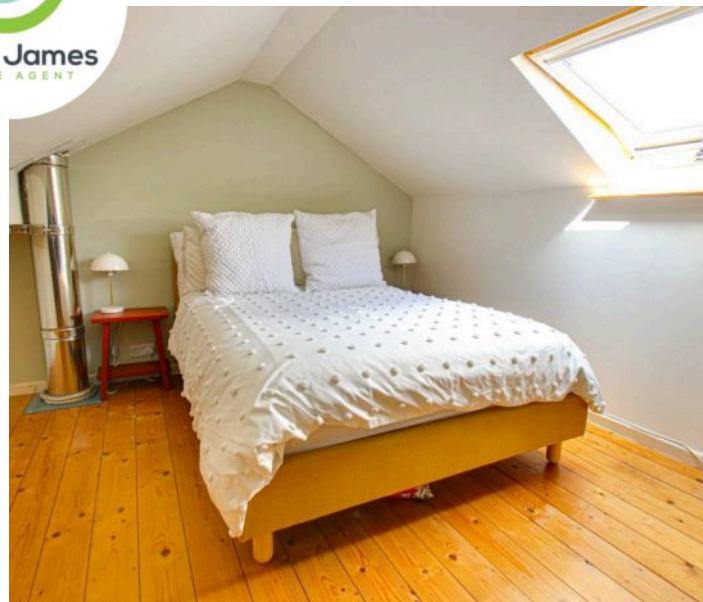
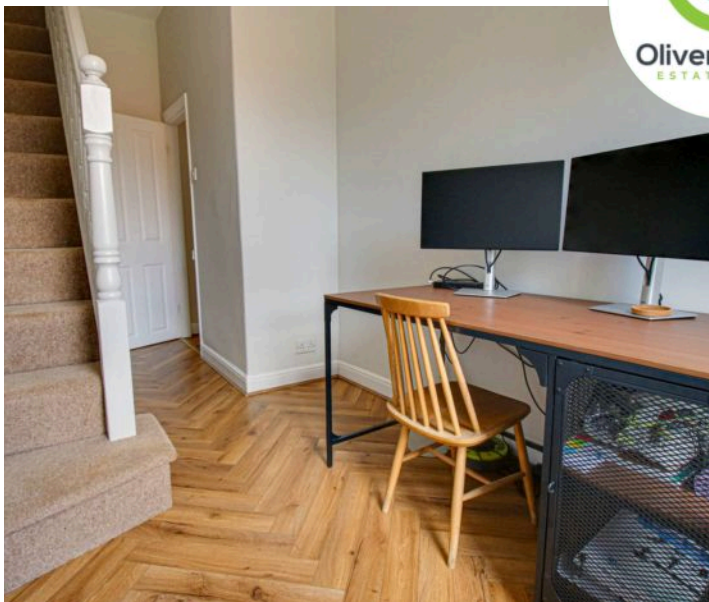
9' 10" x 13' 1" (3.00m x 4.00m)

Front facing upvc double glazed window, Herringbone styled flooring and radiator.

### Bedroom Two

16' 1" x 6' 7" (4.90m x 2.00m)

Rear facing upvc double glazed window, herringbone styled flooring, understairs storage and radiator. Fixed stairs to loft room.



### Loft Room

11' 2" x 11' 6" (3.40m x 3.50m)

Skylight, wooden floor and recess cupboard. (sold as a loft space not a bedroom)

### Bathroom

6' 7" x 9' 10" (2.00m x 3.00m)

Rear facing upvc double glazed window, four piece suite comprising of low flush WC, pedestal wash basin, cubicle shower and stunning free standing bath, splash back tiling and heated towel rail.

### Landing

Herringbone styled flooring.



## GARDEN

Rear yard, access point then onto seperate larger garden with lawn and patio.





Total Area: 72.0 m<sup>2</sup> ... 775 ft<sup>2</sup>

All measurements are approximate and for display purposes only



Total Area: 72.0 m<sup>2</sup> ... 775 ft<sup>2</sup>

All measurements are approximate and for display purposes only





**Oliver James**

Oliver James, 4 Liverpool Road - M44 5AF

0161 696 5050 • [hello@oliverjames.co.uk](mailto:hello@oliverjames.co.uk) • [oliverjames.co.uk](http://oliverjames.co.uk)

