



3 Agister Road, Chigwell

Chigwell

Guide Price £425,000



BOWDEN  
BRADLEY





## 3 Agister Road

Chigwell, Chigwell

GUIDE PRICE £425-450K Nestled on Agister Road in the charming area of Chigwell, this delightful semi-detached house offers a perfect blend of com...

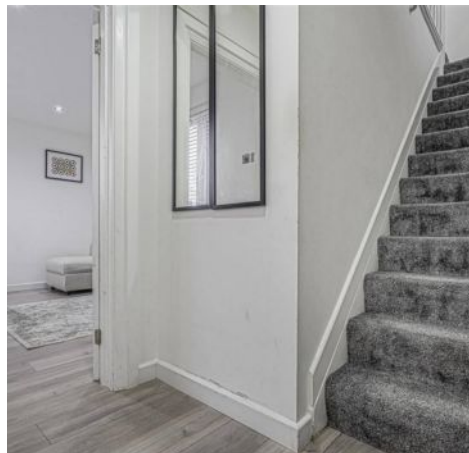
Council Tax band: TBD

EPC Energy Efficiency Rating: F

EPC Environmental Impact Rating: F

- Excellent Transport Links
- Extended to Rear
- Off Road Parking
- Close to Sought After Schools
- Well Presented Throughout
- 2 Bedroom Brick Built House
- Guide Price £425,000 - £450,000
- Spacious Kitchen/Family Area
- Close to Hainault Forest
- Ground Floor W/C and Utility Area

**B**  
**BOWDE**  
**BRADLE**







Porch

Hallway

**Living Room**

Dimensions: 4.57m x 3.99m (15'0 x 13'1).

**Kitchen/Diner**

Dimensions: 4.88m x 4.57m (16'0 x 15'0).

**Ground Floor W/C / Utility Room**

**Landing**

**Bedroom**

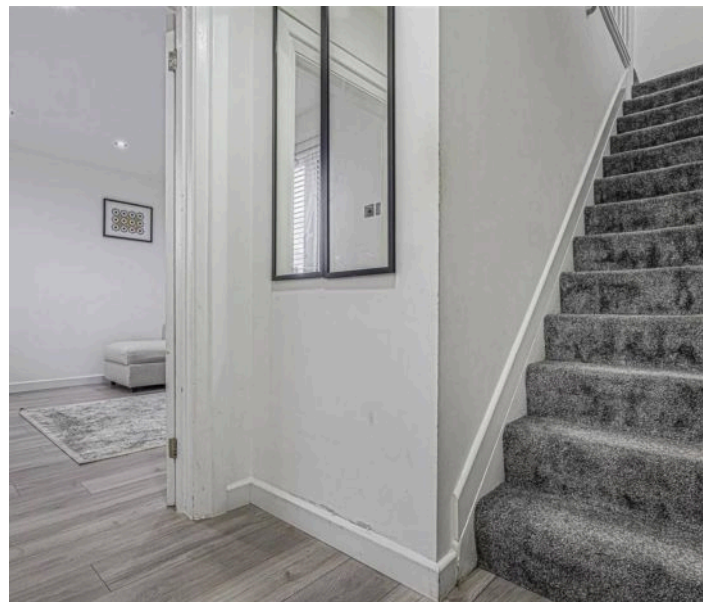
Dimensions: 5.77m x 3.05m (18'11 x 10'0 ).

**Bedroom**

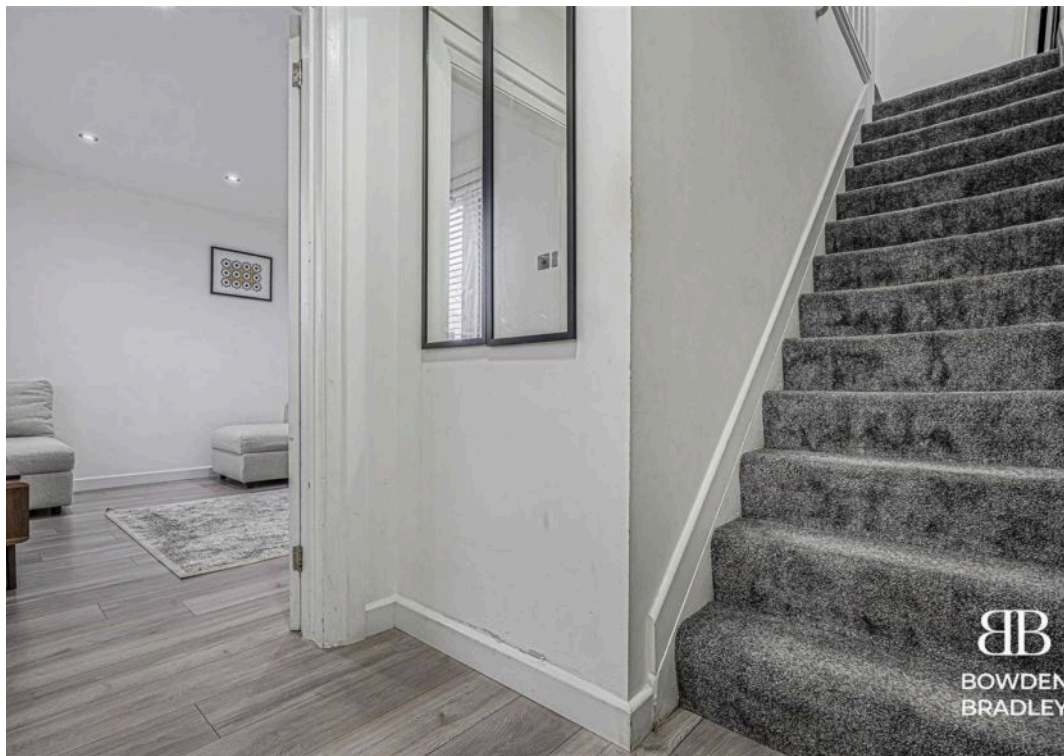
Dimensions: 3.68m x 2.92m (12'1 x 9'7 ).

**Bathroom**

**Garden**

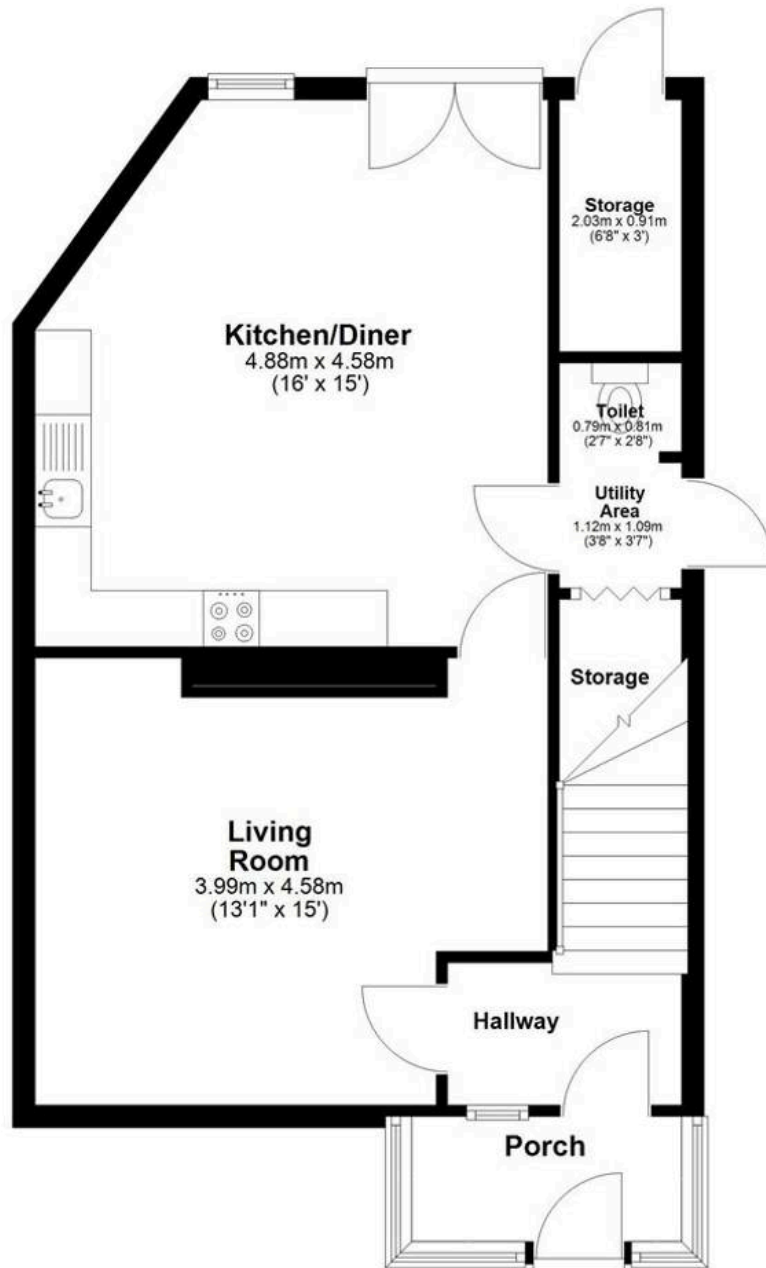






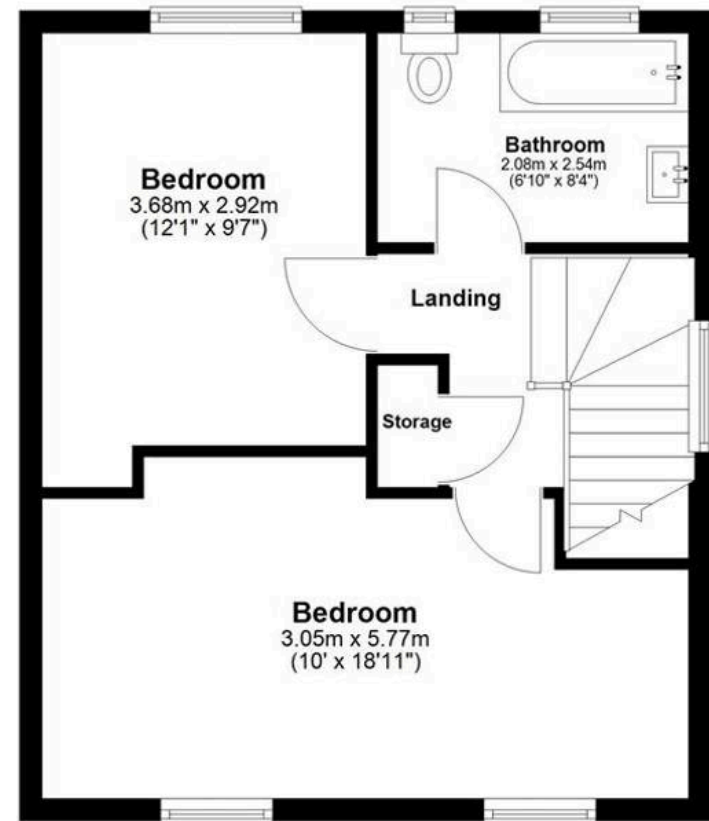
## Ground Floor

Approx. 51.5 sq. metres (554.4 sq. feet)



## First Floor

Approx. 38.7 sq. metres (417.0 sq. feet)



Total area: approx. 90.3 sq. metres (971.5 sq. feet)





**BB**  
BOWDEN  
BRADLEY

## Bowden Bradley

Bansal House, Bracken Industrial Estate, 185 Forest Road - IG6 3HX

02080593593 • [info@bowdenbradley.co.uk](mailto:info@bowdenbradley.co.uk) • [bowdenbradley.co.uk/](http://bowdenbradley.co.uk/)