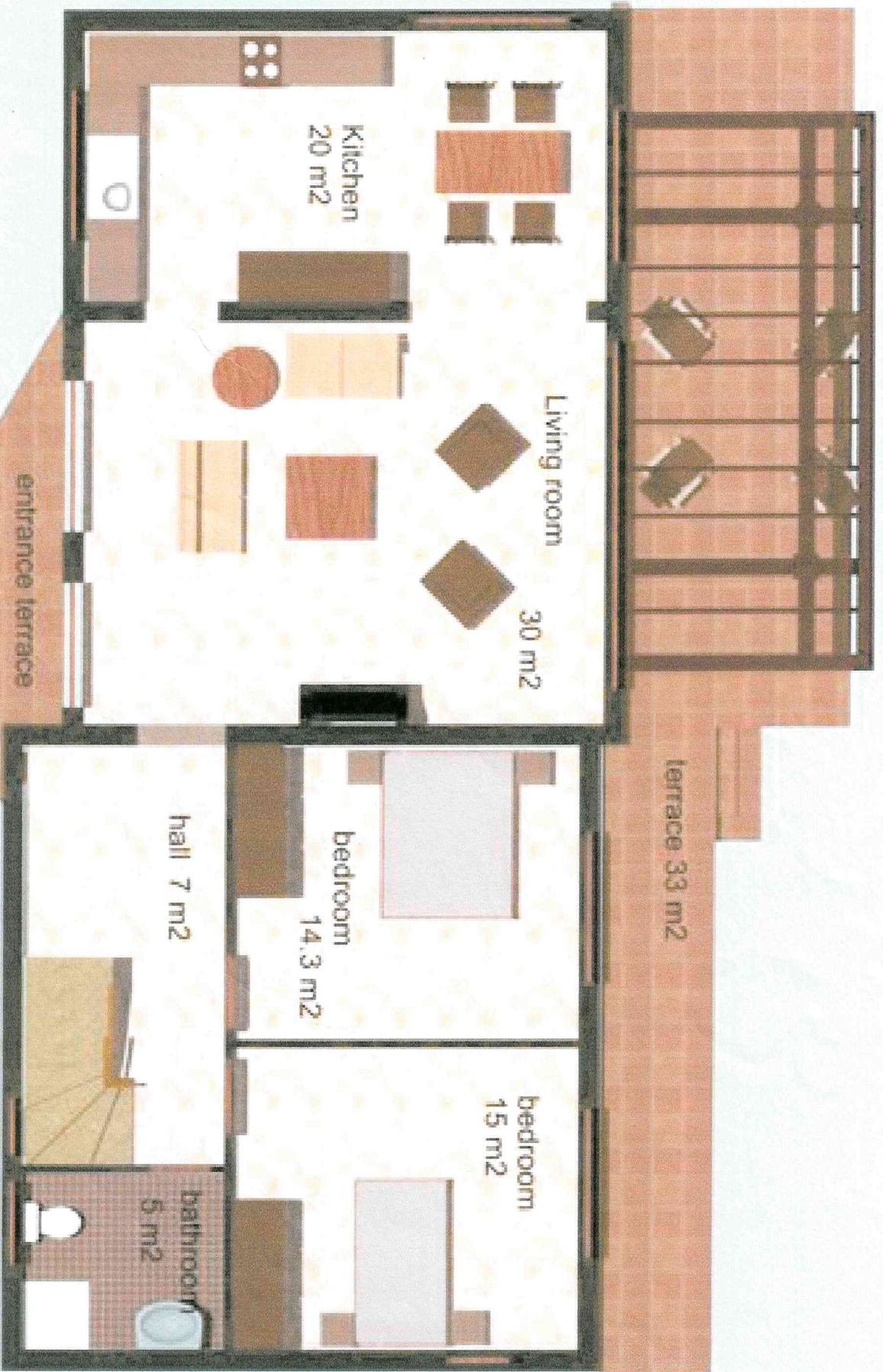




Beachside Villas - Esentepe

- Located right on the beach in a small hill. Nothing in front of but your own bay. Only 15 houses with private positioning facing the Mediterranean.
- Traditional and modern style mixed for easy living. Building area indoor 160 m2 NET + terraces and balconies totaling the living space over 250 m2. Highest building standards and materials.
- Fire place, driveway and front wall included in the price.
- Site Electric Generator, Broadband Internet, Market and Site Manager for one year.
- Ground floor and steps : Natural Marble - Travertine
- Bedrooms and Terraces : Ceramic Tiles
- External Doors and Windows : Wood colour PVC – Double Glazed
- Internal Doors : American Pressed doors
- Kitchen & Bed Room Cabinets : Laminated material
- Appliances included : 4 Split Air conditioning Units
Refrigerator, Oven, Stove, Washing Machine



ground floor plan



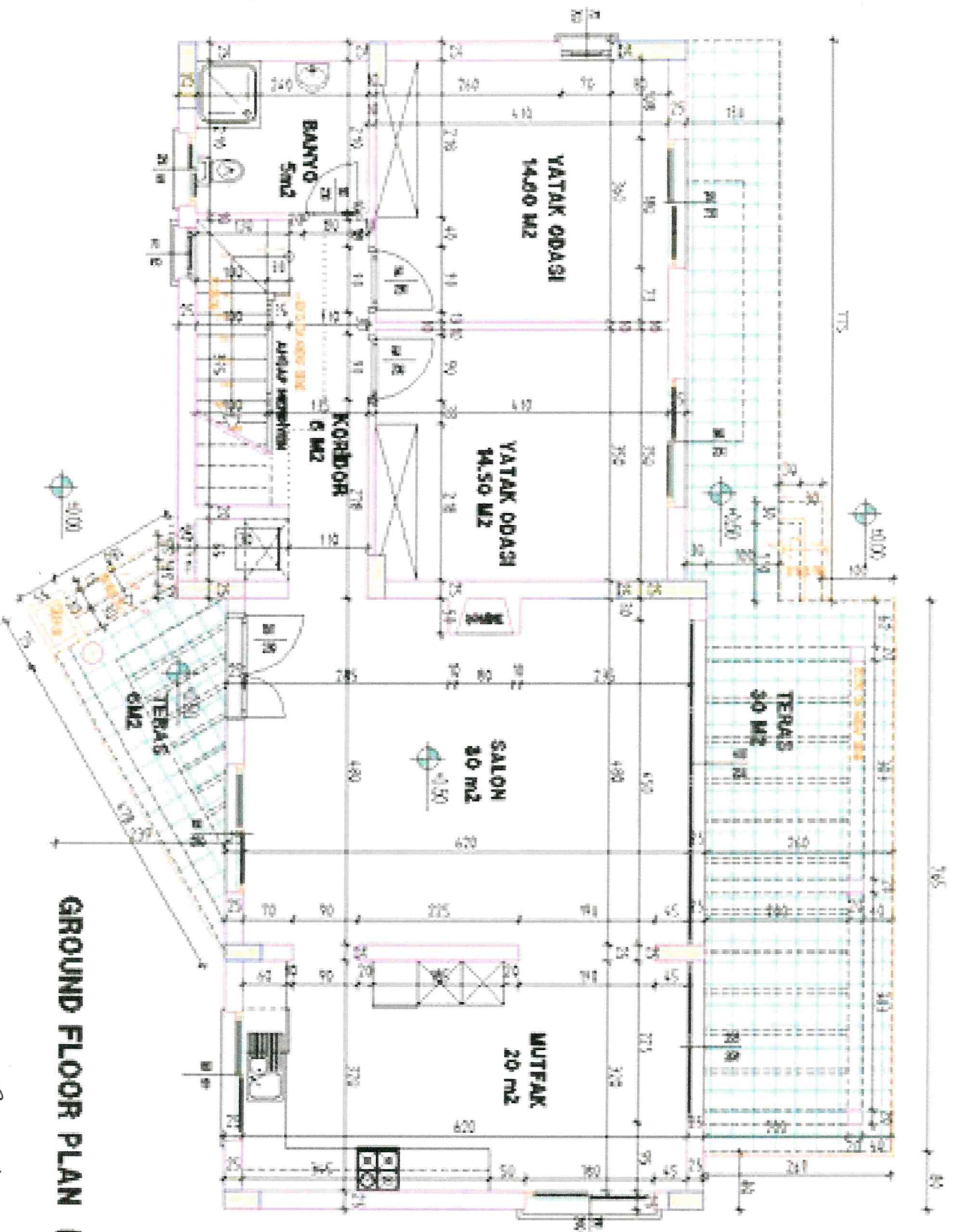
terrace 52 m²

Master bedroom
29 m²

balcony
7 m²

bathroom
5 m²

FIRST FLOOR PLAN



GROUND FLOOR PLAN (A-TYPE)

Scale 1 cm = 80 cm