





Collecting the children from school and enjoy a short walk through the village to your beautiful cottage. Osborne House has prime position in the village centre with a gorgeous outlook to the front, open your porch door, put your shoes neatly away and head inside.

Welcome inside, the place you had always hoped you would find for your family to call home, your dreams have become reality.

The living room is first with beautiful striking decor, the window overlooking the front garden and finished off with a wood burning stove neatly framed by a chunky oak mantle. You picture chilly evenings in here, the family all settled in for the night, hot chocolate in hand and basking in the glow from the smouldering fire, you never want the days to finish.

Take a look through the door on the right and you're into your sizable home office and snug but as times change it could have so many different uses depending on what you need. With lots of light from the front and back windows, this room really is a fabulous addition.



Back to the living room and out to the kitchen beyond, this room really does have the wow factor with with the perfect blend of modern convenience and traditional style. You love cooking up a storm in here and with a huge pantry cupboard on one side you can keep your fridge and provisions neatly out of sight and there is certainly no shortage of storage here. Gather your nearest and dearest to enjoy hearty meals around the table in the very heart of your home.

Another door leads on through to a ground floor wc and utility room, ideal for your four legged friend to intercept muddy paws fresh from the garden.

Back into the living room and a door takes you upstairs, weary heads and tired eyes find a welcome retreat in the cosy bedrooms upstairs. With three good double bedrooms with light and airy out looks. The main bedroom has views to the front and comfortably accommodates your comfy bed and furniture, you love waking up hear and listening to the village spring into life. Bedroom two and three also benefit from a light and airy feel.

The family bathroom completes the upstairs, with a hotel feel you wont want to leave. If you have the time you will enjoy a long soak in your bath, light a candle and get a glass of your favourite tippie and enjoy. When time is of the essence the separate stylish black edged glass shower is just waiting for you, ready to wake you up and raring to go.

Explore the outdoors

The enclosed back garden is surprisingly spacious and has a shed to store your lawn mower and garden toys, with plenty of space for the children and pets to play. The side access means you can store your bins out of sight. The cottage garden to the front is the perfect frame to welcome you home.



Finer Details

Oil Central Heating - Serviced 2020

Electrical Upgrading - 2017

Recently fitted Kitchen

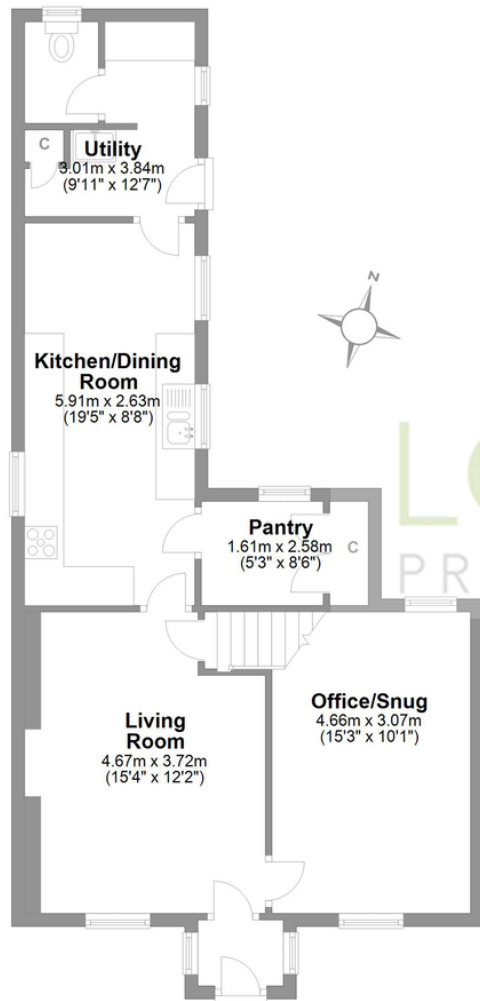
Recently Fitted Bathroom





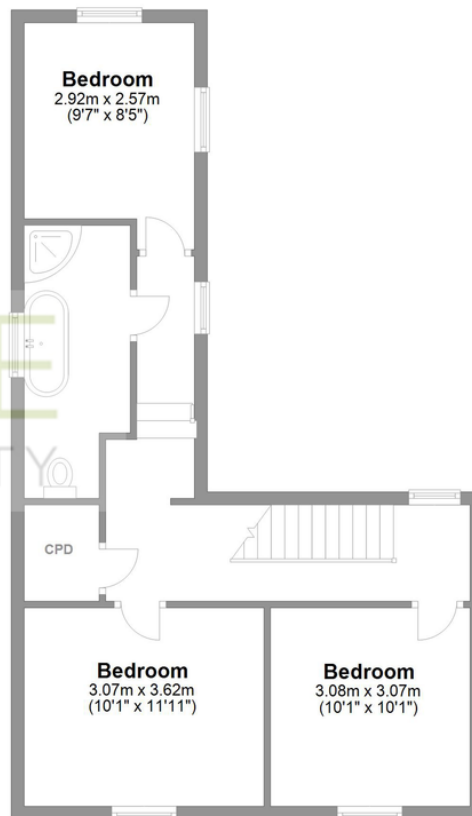
Osbourne House Hunton

Total area: approx. 116.2 sq. metres (1251.2 sq. feet)



Ground Floor

Approx. 65.0 sq. metres (699.9 sq. feet)



First Floor

Approx. 51.2 sq. metres (551.3 sq. feet)

Whilst every attempt has been made to ensure the accuracy of the floorplans contained here, measurements of doors, windows, rooms and any other items are approximate and no responsibility is taken for any error, omission or mis-statement. This plan is not drawn to scale and is for illustrative purposes only & should be used as such by any prospective purchaser. Created especially for Love Property by Vue3sixty Ltd

01748 834 373

hello@lovepropertyuk.co.uk

find us on Facebook

@lovingproperty

Catterick Garrison

18 Richmond Road, Catterick

Love Property UK Ltd

Company Registration No. 6779915

www.lovepropertyuk.co.uk