

4 EASBY COURT

RICHMOND

LOVE PROPERTY. 

LOVE THE JOURNEY





Welcome home...

Park your car in the courtyard outside or in your garage behind it's only a few steps before you are inside your own perfect sanctuary. Once in the hallway you can hang your coat up and take off your shoes and carry on through to your kitchen.

The kitchen is big enough to enjoy breakfast around the table and a great space to enjoy cooking up a feast. Lots of cupboards are there to keep everything out of sight, the kitchen window enjoys views out to the back garden, you can watch the birds whilst washing up!

The living room is next and is a great size, your comfy furniture easily fits and if you are chilly you can turn on the fire. With plenty of room for a table and chairs you can enjoy dinner with a garden view, if you like a peaceful space this is ideal.

And don't forget those chilly afternoons, after a brisk walk round the Easby loop you head home to get cosy inside, surrounded by peace and tranquility.

When its time for bed you can head upstairs and chose from one of three bedrooms. The largest of the three bedrooms is first right at the top of the stairs has lovely views down to the abbey and right across the open countryside, back out into the sizable hallway the doors to the two more bedrooms and house bathroom all await and whether you need room for guests or a home office there is space to choose.

Outside the back garden has lots of space to put a sun lounge and table and chairs, perfect to make the most of a sunny afternoon. The side gate leads out to your garage and outside storage.









Finer details

Built in 1700s
Converted in mid 1990s by current owners
Grade 2 listed

Heating: LPG gas - boiler in kitchen
Enclosed Back garden

Parking: Allocated space in courtyard and garage
Maintenance: Contributions on a shared basis as and
when necessary to empty septic tank and maintain
courtyard

Council Tax Band: C
EPC: Exempt

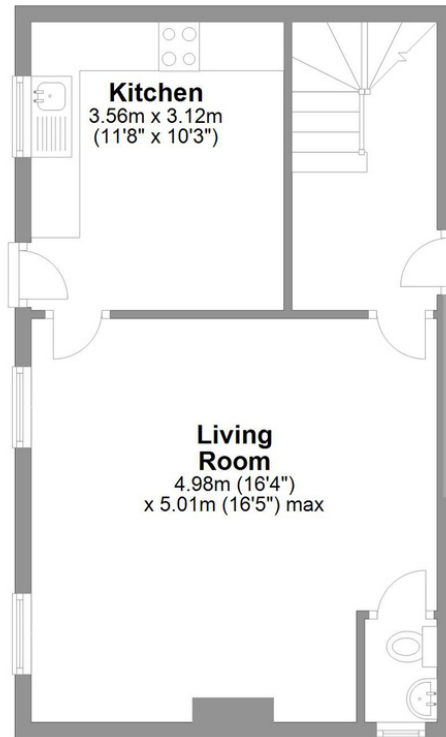
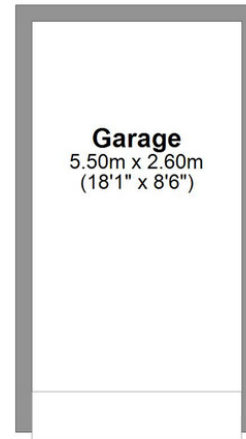
<https://w3w.co/quilt.relegate.bongo>

This what3words address refers to a 3 meter square location. Tap the link or enter the 3 words into the free what3words app to find it.



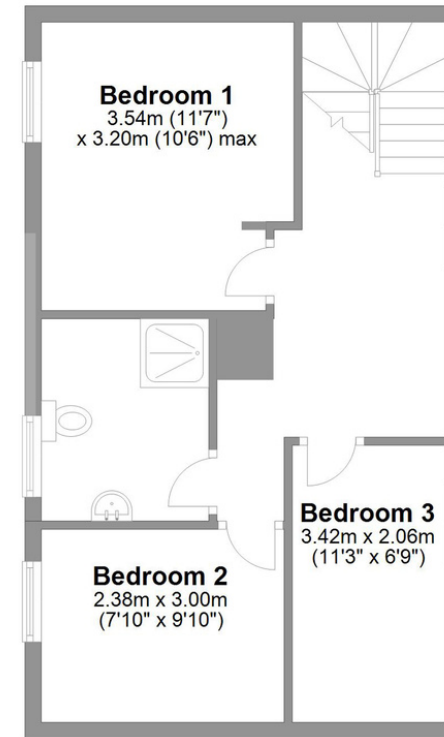
Easby Court Easby, Richmond

Total area: approx. 100.9 sq. metres (1085.9 sq. feet)



Ground Floor

Approx. 57.1 sq. metres (614.2 sq. feet)



First Floor

Approx. 43.8 sq. metres (471.7 sq. feet)

LOVE
PROPERTY

Whilst every attempt has been made to ensure the accuracy of the floorplans contained here, measurements of doors, windows, rooms and any other items are approximate and no responsibility is taken for any error, omission or mis-statement. This plan is not drawn to scale and is for illustrative purposes only & should be used as such by any prospective purchaser.

Created especially for Love Property by Vue3sixty Ltd