

5 EASBY COURT

RICHMOND

LOVE PROPERTY.

LOVE THE JOURNEY





Welcome home...

Park your car in your space outside or in your garage behind it's only a few steps before you are inside your own perfect sanctuary. Once inside you can hang your coat up and take off your shoes as you relax because you are home.

The living room is a great size, your comfy furniture easily fits and is a cosy place to enjoy an evening in.

The kitchen is big enough to enjoy breakfast or dinner around the table and a great space to enjoy cooking up a feast. Lots of cupboards are there to keep everything out of sight, the kitchen window enjoys views outside, you can watch the world go by whilst washing up!

And don't forget those chilly afternoons, after a brisk walk round the Easby loop you head home to get cosy inside, surrounded by peace and tranquillity.

When its time for bed you can head upstairs and chose from one of two bedrooms. The largest of the two bedrooms is at the top of the stairs has lovely views across the open courtyard and back down the lane to Easby, another bedroom with far reaching views across the Abbey and house bathroom all await and whether you need room for guests or a home office there is space to choose.

Outside there is a secret back garden, the only one with views of the Abbey and has lots of space to put a sun lounger and table and chairs, perfect to make the most of a sunny afternoon.









Finer details

Built in 1700s
Converted in mid 1990s by current owners
Grade 2 listed
Heating: Gas LPG
Parking: Allocated space and garage
Drainage: Septic tank shared with Easby Hall and cottages
Maintenance: Contributions on a shared basis as and when necessary to empty septic tank and maintain courtyard
Council Tax Band: C
Postcode: DL10 7JU
EPC: Exempt

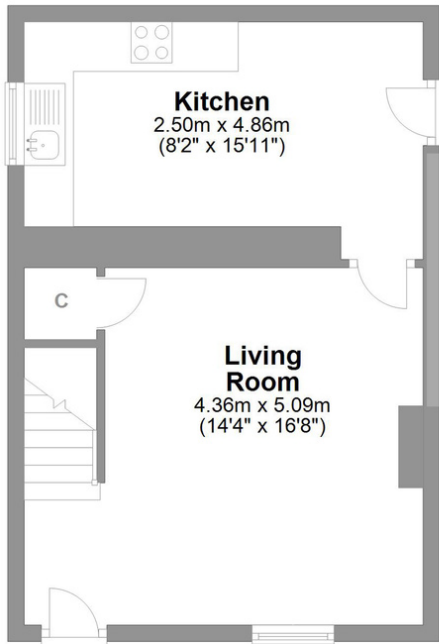
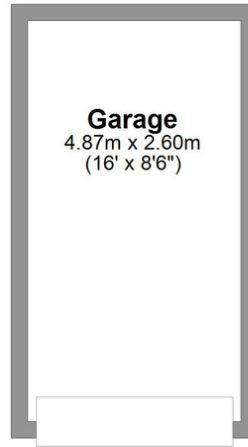
<https://w3w.co/resonates.dives.chills>

This what3words address refers to a 3 metre square location. Tap the link or enter the 3 words into the free what3words app to find it.

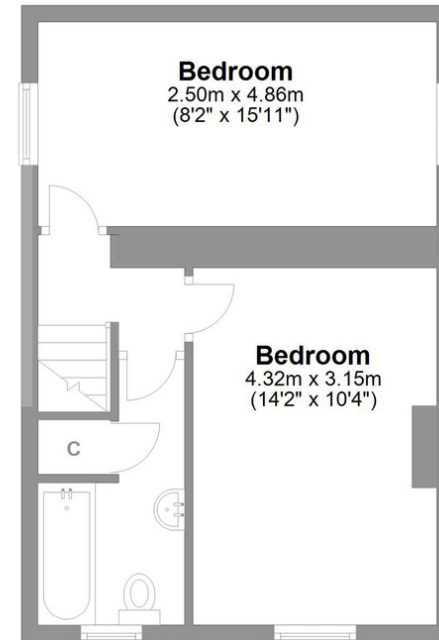


Easby Court Easby, Richmond

Total area: approx. 85.0 sq. metres (915.3 sq. feet)



Ground Floor
Approx. 49.3 sq. metres (530.2 sq. feet)



First Floor
Approx. 35.8 sq. metres (385.0 sq. feet)



Whilst every attempt has been made to ensure the accuracy of the floorplans contained here, measurements of doors, windows, rooms and any other items are approximate and no responsibility is taken for any error, omission or mis-statement. This plan is not drawn to scale and is for illustrative purposes only & should be used as such by any prospective purchaser. Created especially for Love Property by Vue3sixty Ltd