

THE SPRINGS

MIDDLEHAM

LOVE PROPERTY. 

LOVE THE JOURNEY



The Springs Middleham

Found in the picturesque market town of Middleham, this beautiful stone built home awaits. Here you're tucked away on a quiet cul de sac, just a stone's throw away from the centre of the town where you will find local shops, eateries, and a school. There are plenty of lovely walks here too, so should you be an avid walker or enjoy the scenic route when taking your dog out you have plenty to choose from, and if days out in the countryside are your thing, then you can relish in visiting the surrounding towns and villages.



Step inside...

On arrival at your home, park up on the driveway where a couple of cars can be kept off road. In front you'll find a garage where you can keep bikes, garden tools, or use as a workshop, plus with the pitched roof you have extra space for storing away your bits and bobs.

Step into the porchway where you can hang coats and tuck shoes neatly out of sight before entering the main hallway. Straight into the hall and to the left you'll find your downstairs WC, ideal if you have guests over and don't want them going upstairs.

Through to the spacious, traditional kitchen and pop the kettle on after a day out and about. Whilst your tea brews you can get ingredients out and ready for tea, there are plenty of cupboards in here so keeping kitchen ingredients stored away is no problem. There's space for a small dining set in here too, so should you want it sit around the table with a cuppa and a few biscuits when friends visit you can.

Through to the living room next and in here you have ample room for a cosy sofa and statement armchair, sit back and relax after a day out walking. You have a fireplace here so on colder evenings you can wrap up in a blanket and snuggle in front of the fire whilst enjoying your favourite series.

To the back of your home there's a useful conservatory room. This space offers you an extra place to put a dining table, extra sofa or have as your home office or gym, the choice is yours. With views out to the garden it's a lovely place to sit on a summers evening and enjoy the last moments of the sunshine.





Time for bed...

Once the evening draws to a close take yourself off to bed. Upstairs there are three bedrooms to choose from, two doubles and a single. The main room is to the front of the house and in here you have fitted storage throughout, framing your double bed. Waking up here is a treat as you open the curtains and look across the rolling countryside.

Your second and third bedrooms are to the back of the house and again, have delightful views over North Yorkshire. You have another double bedroom with lots of fitted storage, plus a single room ideal for a nursery, guest room or home office.

Your four-piece-suite bathroom has a built-in bath and built in shower, perfect if you love a bubble bath to wind down on an evening, or if you need a shower to wake up your senses on a morning.



Breath of fresh air...

Head into your patioed garden where you have plenty of options for the space, will it be a seating area with a firepit, or a swinging loveseat? There's a greenhouse to the back, so if you're a keen gardener you can plant tomatoes and more in here plus deck out the rest of the garden with pots filled with colourful flowers.



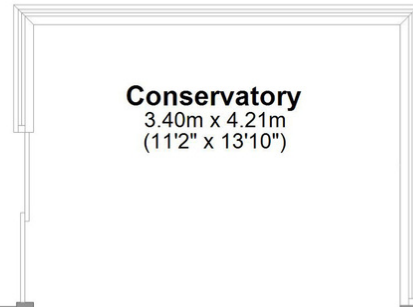
Finer Details

Postcode: DL8 4RB
Freehold
Council tax band: C
EPC rating: D

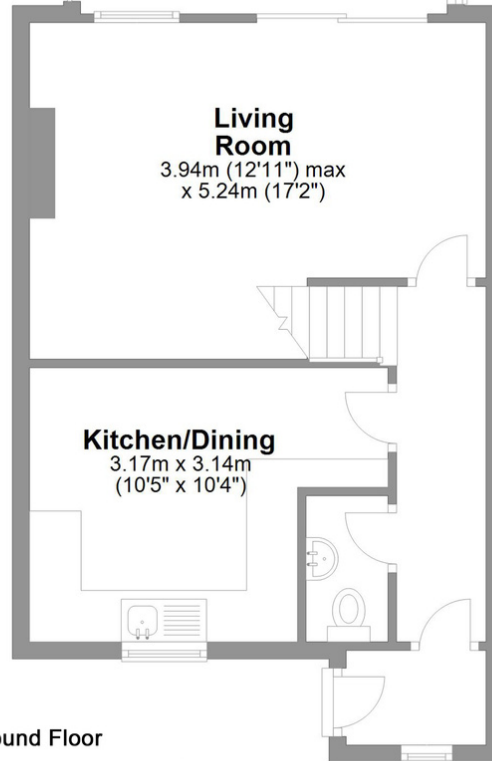




Garage



Conservatory
3.40m x 4.21m
(11'2" x 13'10")



Living Room

3.94m (12'11") max
x 5.24m (17'2")

Kitchen/Dining

3.17m x 3.14m
(10'5" x 10'4")

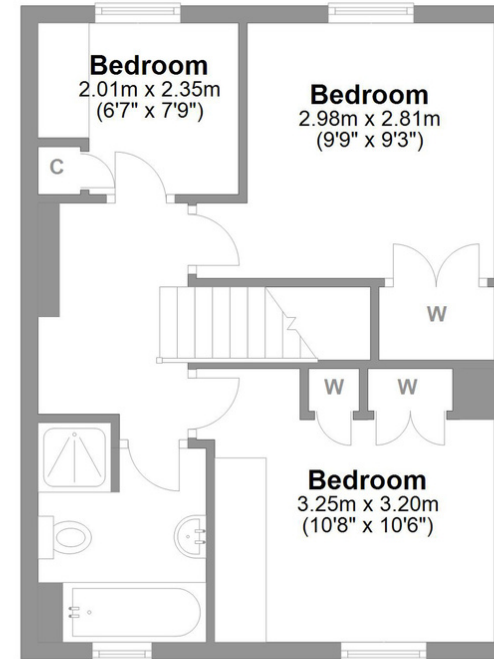


Ground Floor

Approx. 70.6 sq. metres (760.4 sq. feet)

The Springs Middleham

Total area: approx. 109.4 sq. metres (1178.0 sq. feet)



Bedroom

2.01m x 2.35m
(6'7" x 7'9")

Bedroom

2.98m x 2.81m
(9'9" x 9'3")

Bedroom

3.25m x 3.20m
(10'8" x 10'6")

First Floor

Approx. 38.8 sq. metres (417.7 sq. feet)

LOVE PROPERTY.♡

Whilst every attempt has been made to ensure the accuracy of the floorplans contained here, measurements of doors, windows, rooms and any other items are approximate and no responsibility is taken for any error, omission or mis-statement. This plan is not drawn to scale and is for illustrative purposes only & should be used as such by any prospective purchaser. Created especially for Love Property by Vue3sixty Ltd