

RUTLAND CLOSE

CATTERICK GARRISON

LOVE PROPERTY. 

LOVE THE JOURNEY



RUTLAND CLOSE, CATTERICK GARRISON

Found in the centre of Catterick Garrison, Rutland Close awaits. Your ideal lock up and leave home is close by to local shops and schools, plus you're close to the Princess Gate shopping plaza where you will find shops, eateries and more. It's only a short drive to the A1, or into the dales too, so you can take yourself away at weekends and explore all the local attractions near you.



Welcome home...

Pull up into your allocated parking space before unloading the shopping into the house. Stepping inside your hallway you have handy WC to the right ideal when you have guests over for a cuppa! The large cupboard in the hallway is a great spot to hide coats and shoes away before heading into the main part of the house.

To the right of your hallway find the living room. Your windows at either side of the room allow natural light to flow through and make this room feel lovely and airy. Take a seat on your large sofa and kick your feet up to enjoy an evening in, with a cuppa in hand and the electric fire on to set the scene!

When you're feeling peckish head towards the kitchen/diner. In here you'll find plenty of cupboard space to store away all your ingredients and appliances and when you're cooking away you can stay involved in the conversation, as the family gather around the dining table.

Just off the kitchen find a space where you can hide away all your cleaning products and keep your clothes drying rack out of sight, in here there is a large cupboard making it ideal for storing away bits and bobs.



Time for bed...

When it's time to turn in for the night, head upstairs where you'll find a choice of three bedrooms. Your main bedroom is to the back of the house and has plenty of room for your double bed, side tables and dresser, plus there's a built-in wardrobe so you can keep all your clothes stored neatly away!

The second bedroom is again to the back of the house and is a double in size too, with built in wardrobes. The third and final bedroom is to the front of the house and is a single room, ideal for the youngest of the household, or to be turned into your home office.

Your family bathroom completes this floor and has a bath with overhead shower for you to enjoy long soaks, or quick morning wake up's!



Step outside...

When the warmer weather hits, head out to your back garden where you can enjoy family time whilst the BBQ heats up. Your handy shed is where you can keep your lawnmower stored out of sight, and you're not overlooked here making family gatherings more private!

Your home has solar panels which are owned outright, meaning you will be able to save on electricity, ideal to save you some extra money each month. Plus the property has been externally cladded which adds an extra benefit to keeping costs down.







Finer details

Postcode: DL9 3HJ

EPC rating: B

Council tax band: A

Gas central heating

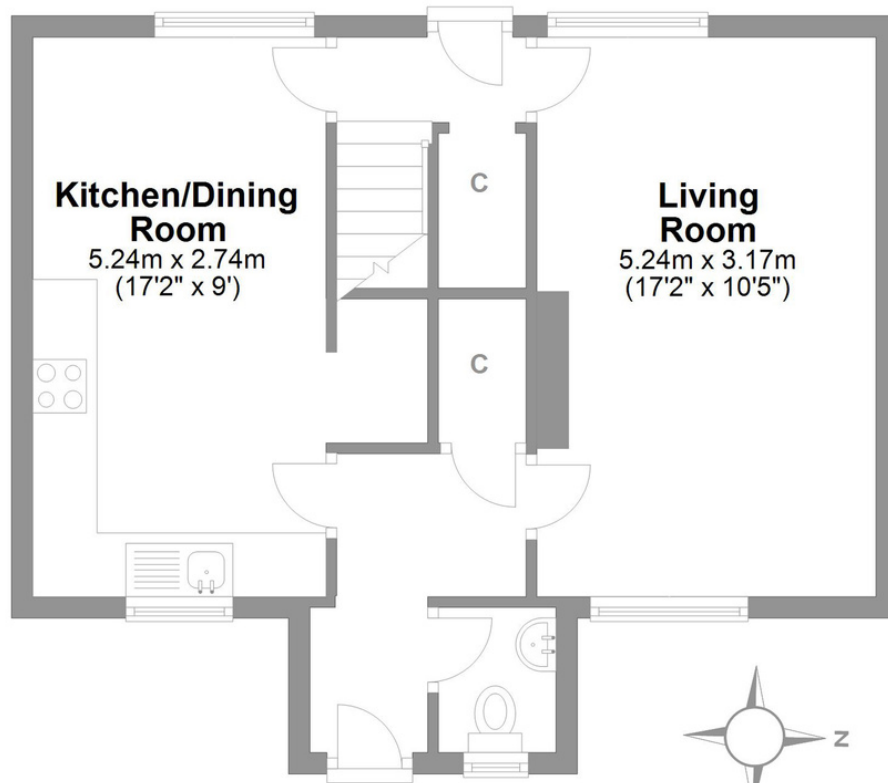
Chain Free

Service charge: £42.35 per month

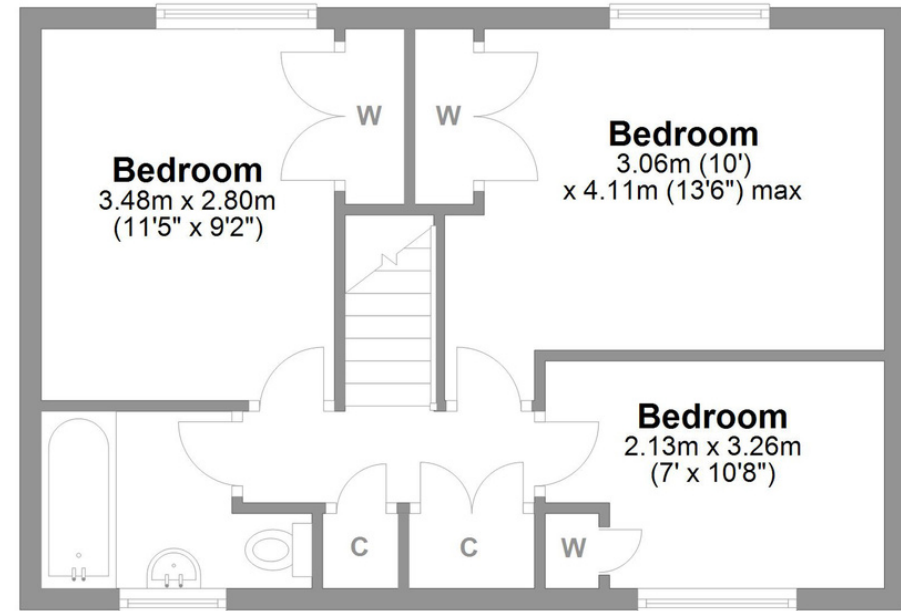
Solar panels owned outright

Rutland Close Catterick Garrison

Total area: approx. 84.9 sq. metres (913.9 sq. feet)



Ground Floor
Approx. 43.2 sq. metres (465.1 sq. feet)



First Floor
Approx. 41.7 sq. metres (448.8 sq. feet)

LOVE PROPERTY.

Whilst every attempt has been made to ensure the accuracy of the floorplans contained here, measurements of doors, windows, rooms and any other items are approximate and no responsibility is taken for any error, omission or mis-statement. This plan is not drawn to scale and is for illustrative purposes only & should be used as such by any prospective purchaser.
Created especially for Love Property by Vue3sixty Ltd