

EDEN CREST

GAINFORD

LOVE PROPERTY. 

LOVE THE JOURNEY



Eden Crest, Gainford

As you approach the home, a sense of community embraces you, with neighbouring houses forming a delightful row of family homes. The front garden, adorned with colorful blooms, hints at the much loved home that awaits within.



Welcome home...

This four-bedroom mid-terrace home embodies the essence of great value for a growing family. With its practical layout, ample living space, and proximity to scenic river walks, village schools and convenient transportation, it offers a haven where memories are crafted. Embrace the opportunities that await within these walls and embark on a journey of fulfilling family life in a village that welcomes you in like old friends.

Once inside, a feeling of spaciousness greets you, as if the home has been designed with the joys of family life in mind. The layout seamlessly connects the living areas, creating a sense of togetherness and fostering effortless interactions. Natural light floods the space, casting a warm glow that illuminates the path of laughter and shared experiences.

The heart of this home lies within the inviting living room, where relaxation takes centre stage. Soft carpets beckon bare feet, while a cozy fireplace stands ready to cast its comforting embrace during colder evenings. Here, family members can unwind, share stories, and create lasting memories.

The adjacent kitchen, a hub of culinary delights, invites creativity and nourishment. Lots of worktop space and space for modern appliances stand ready to assist the family chef in creating delicious meals that bring loved ones together around the dining table. This space becomes a canvas for culinary exploration, fostering a love for food and togetherness.





Family Living...

As the family grows, so too does the need for personal spaces. The four bedrooms offered by this home provide an abundance of options. The main bedroom, a sanctuary of relaxation, offers a private retreat with ample room for rest and rejuvenation. The remaining bedrooms, filled with natural light, provide a haven for children to grow, play, and dream.

Outside, the village reveals its true beauty. River walks, a stone's throw away from the front door, invite exploration and moments of tranquility. Nature's soothing soundtrack accompanies family strolls, offering a respite from the hustle and bustle of everyday life.

The village's charm extends further with education on your doorstep from pre school to primary, a corner shop and pub, convenient access to buses, seamlessly connecting the family to nearby towns, providing the perfect balance between a peaceful lifestyle and urban accessibility.







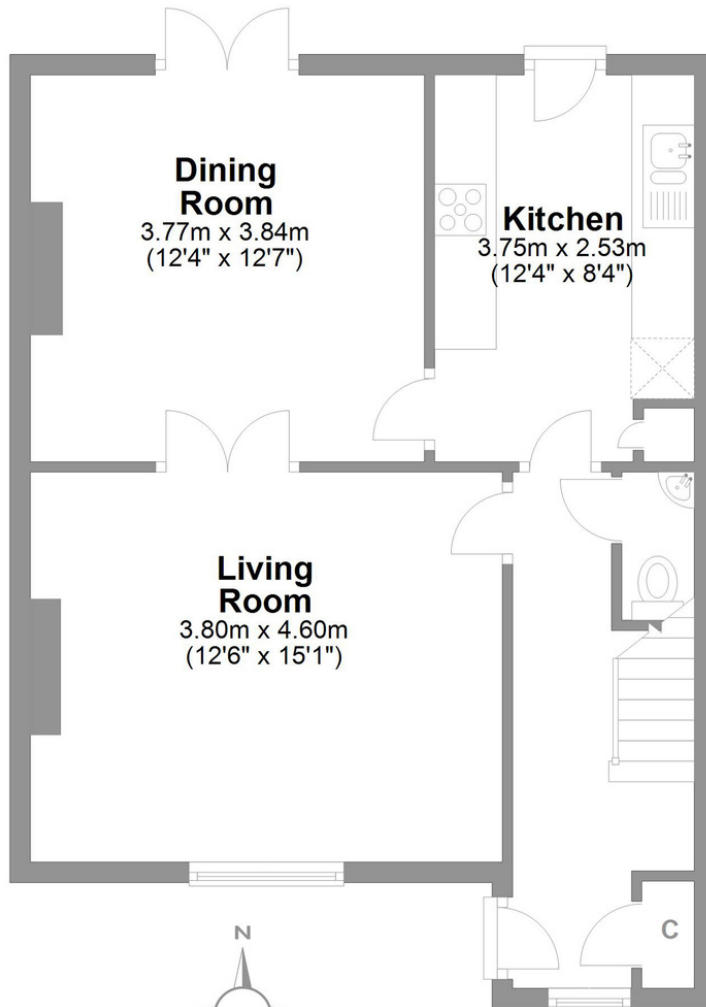
Finer details

Postcode: DL2 3DD
Council Tax Band: A
EPC rating: TBC
Fully renovated in 2012

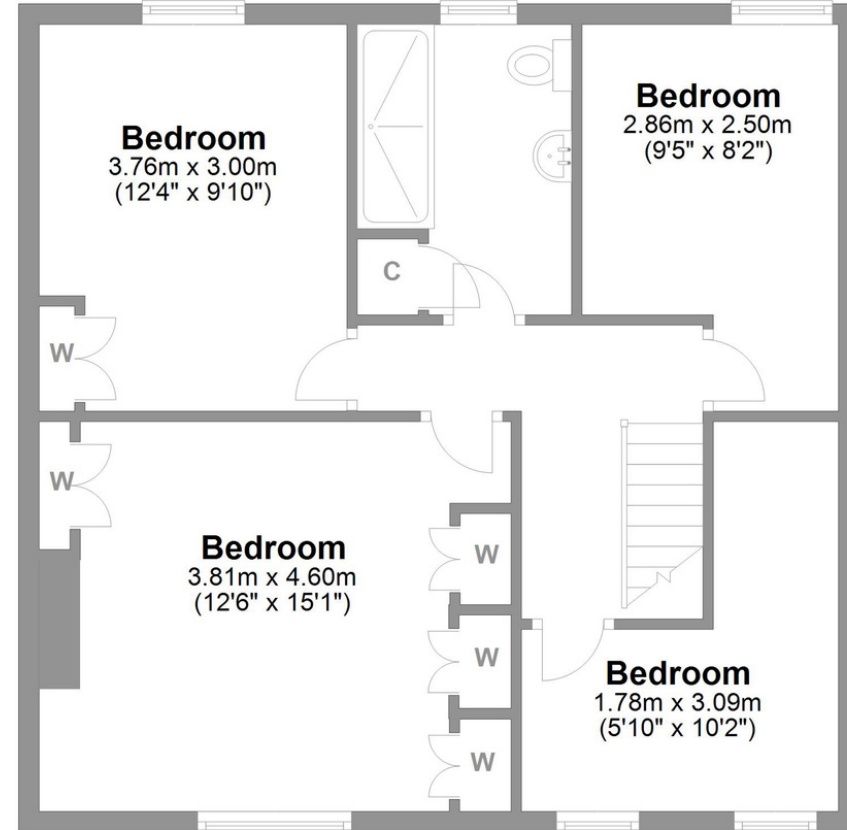
NOTE: This property is owned by a Love Property Team, family member and has an interest in it.

Eden Crest Gainford

Total area: approx. 111.7 sq. metres (1202.4 sq. feet)



Ground Floor
Approx. 51.9 sq. metres (558.7 sq. feet)



First Floor
Approx. 59.8 sq. metres (643.7 sq. feet)

LOVE PROPERTY.♡

Whilst every attempt has been made to ensure the accuracy of the floorplans contained here, measurements of doors, windows, rooms and any other items are approximate and no responsibility is taken for any error, omission or mis-statement. This plan is not drawn to scale and is for illustrative purposes only & should be used as such by any prospective purchaser. Created especially for Love Property by Vue3sixty Ltd