

ESSEX CLOSE

CATTERICK GARRISON

LOVE PROPERTY. 

LOVE THE JOURNEY



Essex Close, Catterick Garrison

Pull up in front of your garage before heading towards your house. Stepping inside your hallway you have handy WC to the right and plenty of cupboard space in front for coats and shoes.

To the left of your hallway find the living room. Your windows at either side of the room allow natural light to flow through and the neutral colour scheme means your furnishings will fit right in. Take a seat on your large sofa and kick your feet up to enjoy an evening in, with a cuppa in hand!

When you're feeling peckish head towards the kitchen/diner. In here you'll find plenty of cupboard space to store away all your ingredients and appliances and when you're cooking away you can stay involved in the conversation, as family or friends gather around the dining table.

Just off the kitchen find a space where you can hide away all of your cleaning products and keep your clothes drying rack out of sight, in here there are two large cupboards making it ideal for storing away bits and bobs.

When the warmer weather hits, head out to your back garden. Your handy shed is where you can keep your lawnmower stored out of sight, and you're not overlooked here making family gatherings more private!





Head upstairs...

When it's time to turn in for the night, head upstairs where you'll find a choice of three bedrooms. Your main bedroom is to the front of the house and has plenty of room for your double bed, side tables and dresser, plus there's a built in wardrobe so you can keep all of your clothes stored neatly away!

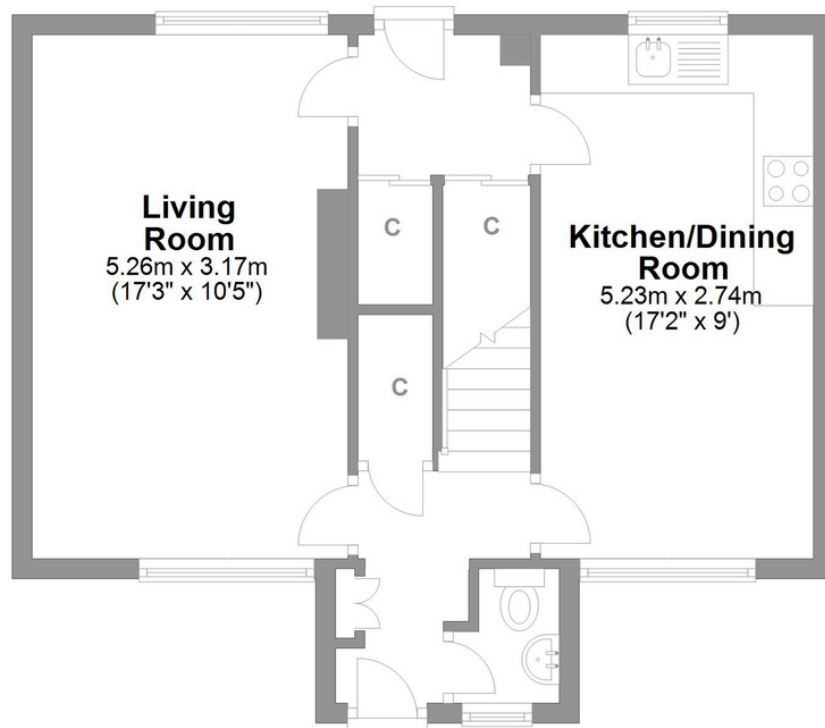
The second bedroom is again to the front of the house and is a double in size too, with built in wardrobes. The third and final bedroom is to the back of the house and is a single room, ideal for the youngest of the household, or to be turned into your home office.

Your family bathroom completes this floor and has a bath with overhead shower for you to enjoy long soaks, or quick morning wake up's!



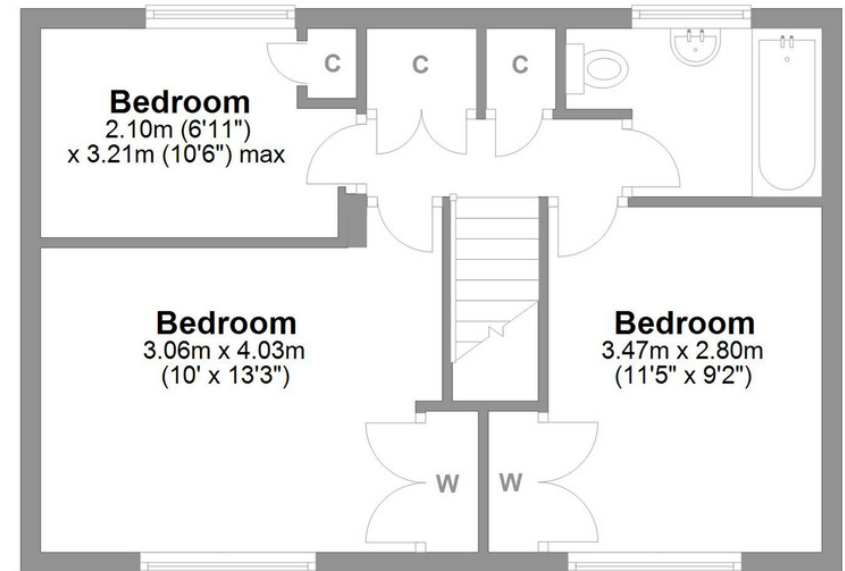
Essex Close Catterick Garrison

Total area: approx. 87.4 sq. metres (941.2 sq. feet)



Ground Floor

Approx. 44.2 sq. metres (476.3 sq. feet)



First Floor

Approx. 43.2 sq. metres (465.0 sq. feet)

FINER DETAILS

Postcode: DL9 3HQ
EPC rating: D
Council tax band: A
Gas central heating
Chain Free
Available with a 28 day exchange
Service charge: Contact the office

LOVE PROPERTY

Whilst every attempt has been made to ensure the accuracy of the floorplans contained here, measurements of doors, windows, rooms and any other items are approximate and no responsibility is taken for any error, omission or mis-statement. This plan is not drawn to scale and is for illustrative purposes only & should be used as such by any prospective purchaser.

Created especially for Love Property by Vue3sixty Ltd