

ABBOTS WAY

MORPETH

LOVE PROPERTY.

LOVE THE JOURNEY



Abbots Way, Morpeth

Welcome to your new family home in Morpeth, where charm and tranquility blend together to create an idyllic living experience. This charming 3-bedroom house is nestled in a convenient location, offering comfortable living. With 3 good sized bedrooms, 1 bathroom and 1 reception room, this property is perfect for a family or those seeking a peaceful retreat.

Situated in Morpeth, this home benefits from its central location. The town offers a range of amenities, including shops, restaurants, and schools, making it a desirable place to live. With excellent transport links, you'll have easy access to nearby cities and towns, ensuring convenience and connectivity.



Welcome home...

As you approach this delightful house, you'll be drawn in by its inviting exterior, noticing the newly installed anthracite windows and doors complete with a wrap around garden, garage and a private driveway.

Step inside and be greeted by the warmth and character that this home exudes from the wooden flooring and neutral decor.

The spacious living room provides plenty of room for relaxing with loved ones or entertaining guests. The large windows allow natural light to flood the room, creating a bright and inviting ambiance.

The heart of the home is the open plan kitchen diner, ready to cater to all your culinary needs. The recent opening up of this room make this kitchen both stylish and functional. Whether you're a seasoned chef or just enjoy cooking for your family, this kitchen will inspire creativity and make meal preparation a breeze.

Leading out to the boot room/back porch, you'll find a great space to store muddy boots.





Time for bed...

The three bedrooms in this house offer comfortable and private spaces for rest and relaxation.

Each room boasts neutral tones and generous proportions, allowing for a personalised touch and providing a peaceful haven to unwind after a long day.

The bathroom is tastefully designed, featuring modern fixtures and a soothing color palette, making it the perfect place for relaxation and self-care.





One of the highlights of this property is it's ready to move into but still has potential to make your own.

Step out into the garden and soak in the beauty of the surrounding countryside. Whether you prefer to enjoy your morning coffee in the garden, this outdoor space provides a quiet retreat from the hustle and bustle of daily life.

Don't miss the opportunity to make this charming 3-bedroom house your forever home. With its stunning views, ample living space, and convenient location, this property is an absolute gem. Contact us today to arrange a viewing and experience the serenity of this Morpeth property for yourself.



Further Information

Postcode: NE61 2LY
EPC Rating: D
Council Tax Band: A
Windows and Doors fitted 2022
Gas Central Heating New Boiler Fitted
Detached garage
Distance to Morpeth Station 1 mile
Distance to Newcastle 15 miles
Sold Chain Free



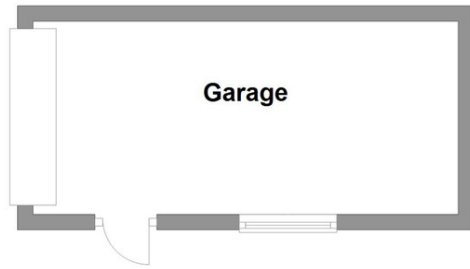
Mobile signal:

Most mobile providers
have 5G in this area



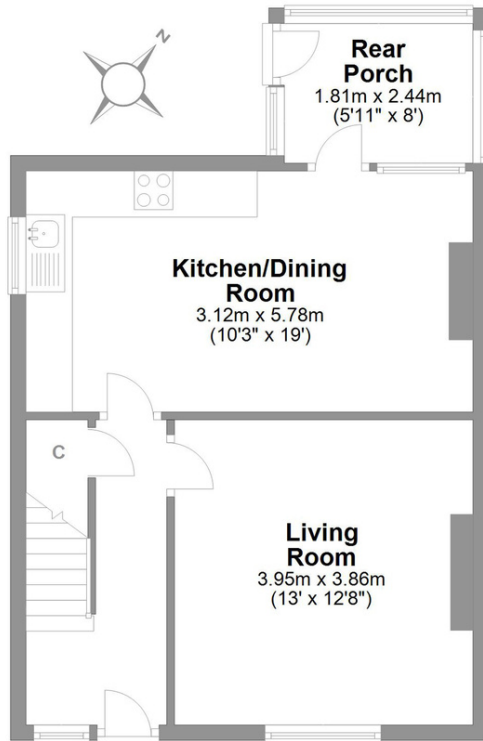
Broadband type:

Ultrafast broadband is
available in this location



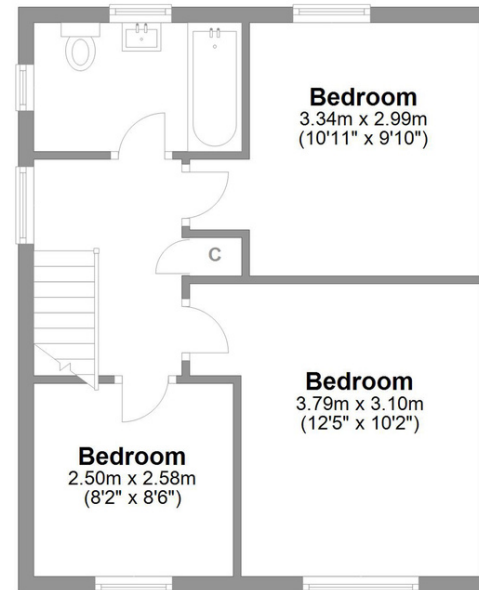
Abbotts Way Morpeth

Total area: approx. 107.0 sq. metres (1151.3 sq. feet)



Ground Floor

Approx. 59.8 sq. metres (643.4 sq. feet)



First Floor

Approx. 47.2 sq. metres (507.9 sq. feet)

LOVE PROPERTY

Whilst every attempt has been made to ensure the accuracy of the floorplans contained here, measurements of doors, windows, rooms and any other items are approximate and no responsibility is taken for any error, omission or mis-statement. This plan is not drawn to scale and is for illustrative purposes only & should be used as such by any prospective purchaser. Created especially for Love Property by Vue3sixty Ltd