

CHURCHILL DRIVE

BROUGH WITH ST GILES

LOVE PROPERTY.

LOVE THE JOURNEY



Welcome home...

Found in Brough With St Giles, this mid-terrace townhouse offers an ideal opportunity for family living. Upon arrival, you're greeted by a convenient driveway leading to a single integral garage, providing ample parking space. A small storage room to the right of the front door offers practical storage for outdoor equipment.

Inside, the hallway leads you directly into the kitchen/dining room, featuring contemporary fittings and patio doors opening onto the back garden, perfect for al fresco dining and entertaining.

Downstairs there is also a handy WC, ideal for convenience.



Living space

Heading upstairs now where the first floor offers a spacious living room, where your large corner sofa can fit. There's also one of three of your double bedrooms on this floor overlooking the front of the house.

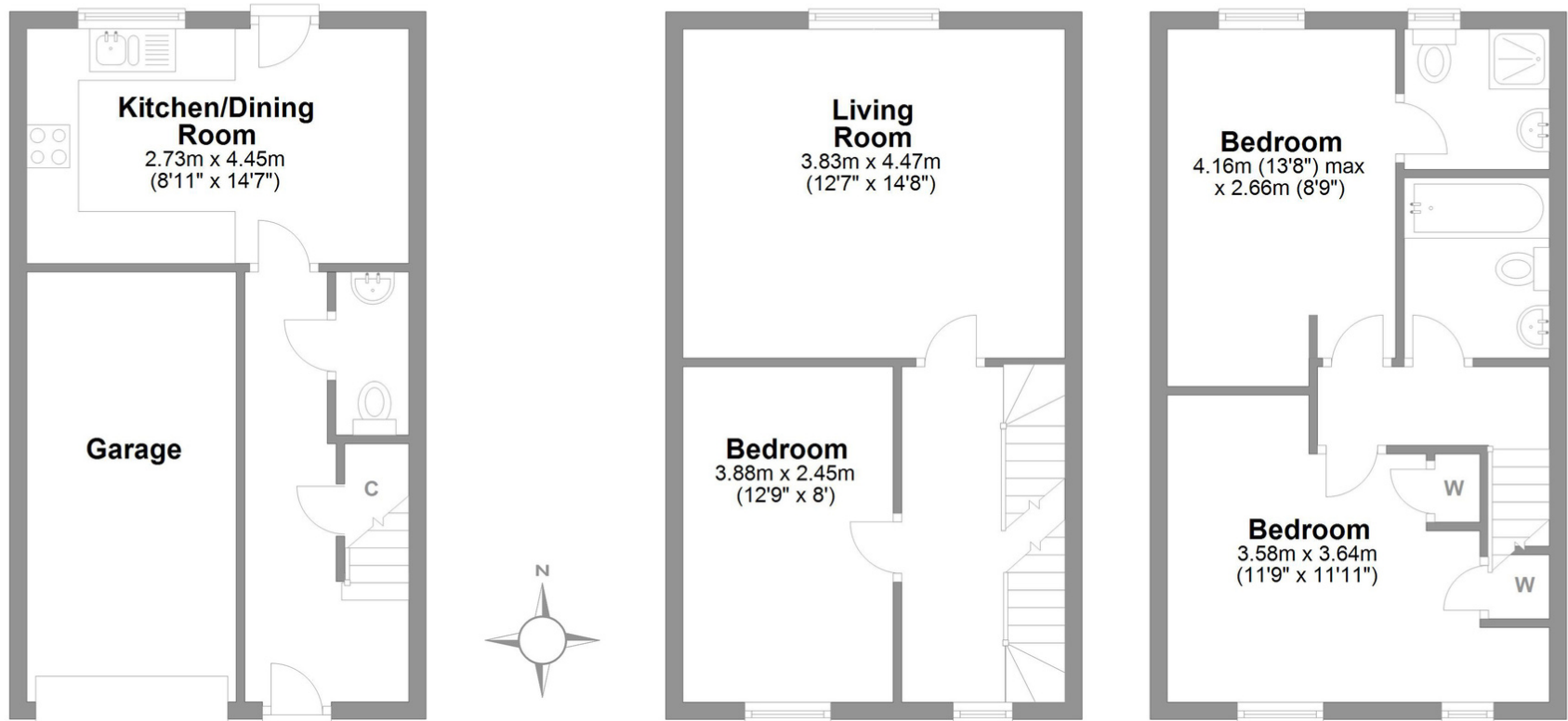
Now venturing up to the second floor, you'll find two further double bedrooms, one benefiting from an en suite shower room. The second bedroom, another double has integral wardrobes, perfect for keeping clothes tucked away neatly. Up here you also have a family bathroom, ideal for a relaxing soak after a long day!





Churchill Drive Brough with St Giles

Total area: approx. 104.6 sq. metres (1125.7 sq. feet)



Ground Floor
Approx. 34.9 sq. metres (375.3 sq. feet)

First Floor
Approx. 34.9 sq. metres (375.3 sq. feet)

Second Floor
Approx. 34.9 sq. metres (375.3 sq. feet)

Finer Details

POSTCODE: DL9 4XR

TENURE: Freehold

COUNCIL TAX BAND:

EPC RATING: C

BUILD TYPE: Brick

CENTRAL HEATING: Gas

Whilst every attempt has been made to ensure the accuracy of the floorplans contained here, measurements of doors, windows, rooms and any other items are approximate and no responsibility is taken for any error, omission or mis-statement. This plan is not drawn to scale and is for illustrative purposes only & should be used as such by any prospective purchaser. Created especially for Love Property by Vue3sixty Ltd

LOVE PROPERTY