

MAISON DIEU

RICHMOND

LOVE PROPERTY. 

LOVE THE JOURNEY



Find this gem in central Richmond, a stones throw away from the hustle and bustle of the town centre perfect for walking into town for a bite to eat and a drink on an evening!

Arriving at your new stone built place, you head inside to settle in for the evening. Your light and airy living room greets you. Perfect for your statement sofa and coffee table, this room is enjoyed by all on an evening, the curtains drawn and a good film on whilst you snuggle up all cosy.

Head to the back of your home to prepare a bite to eat, your kitchen offers the ideal amount of space for cooking up something tasty to enjoy on an evening, whilst you catch up on your days events. The stone wall offers that extra touch of character too, to really set the scene.

When it's time for bed, head upstairs, where you'll find two bedrooms to choose from. The main bedroom is your first stop, ready for your double bed and side tables to fit right in. Plus with two built in cupboards you save on storage space - making this room perfect for those with a few more clothes!

Bedroom two is a great single room for the youngest of the family, or if not needed you could change this into a home study or reading nook, perfect for those working from home.

The four piece suite bathroom, offers a free standing bath, just what you need for relaxing soaks after days out walking the dales, to relax and warm up.



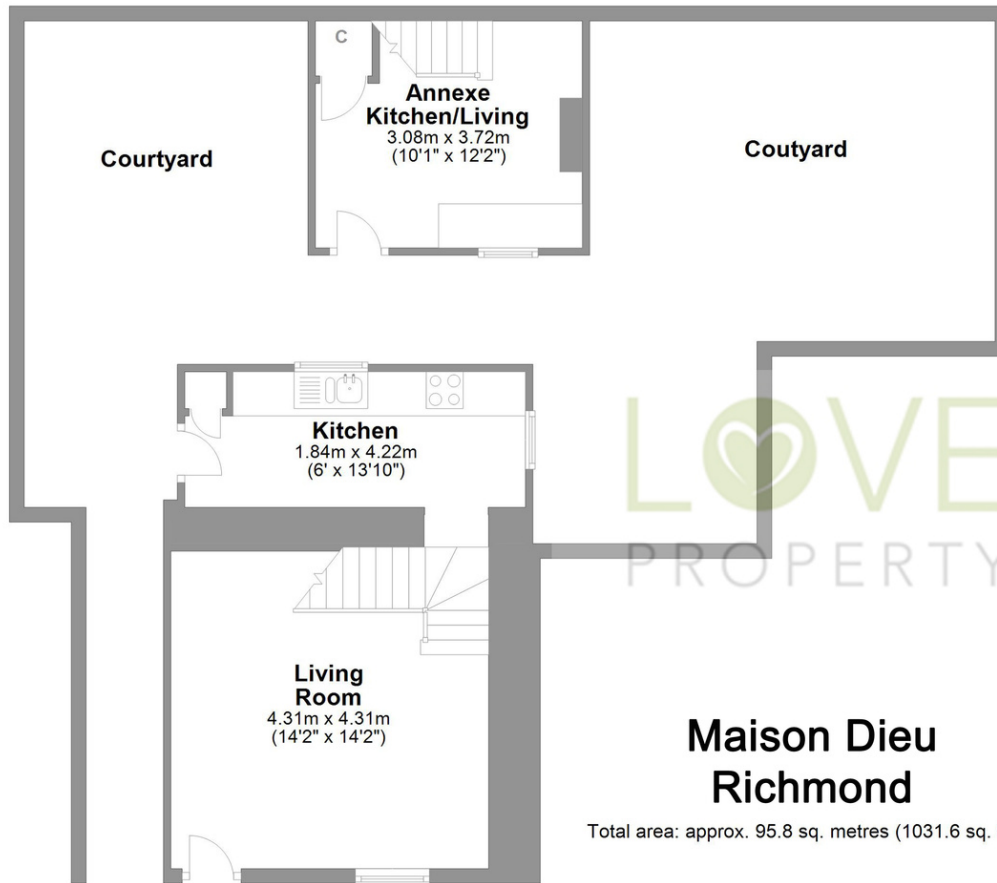


Now to the outside where this home offers a very unique proposition. In the courtyard you will find another building, step inside to discover what it has to offer. The ground floor offers an area for a comfy sofa or table, with a little area for keeping snacks stored away. Upstairs you will find a double bedroom, perfect for guests stopping over, or for the eldest of the household looking for a bit of independence.

The rest of the courtyard is waiting to be developed into a little sanctuary, a few planters here and there and a nice seating area to enjoy those warmer days.

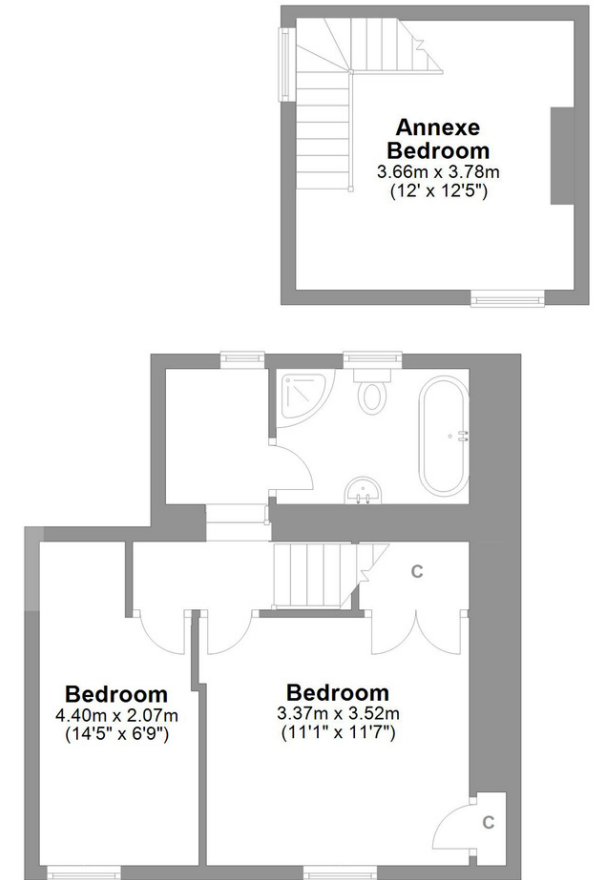






**Ground Floor**

Approx. 42.8 sq. metres (460.6 sq. feet)



Approx. 53.0 sq. metres (571.0 sq. feet)

Postcode: DL10 7AU

Council tax band: B

EPC rating: E

Freehold

Grade 2 listed

No parking

In need of complete renovation

Whilst every attempt has been made to ensure the accuracy of the floorplans contained here, measurements of doors, windows, rooms and any other items are approximate and no responsibility is taken for any error, omission or mis-statement. This plan is not drawn to scale and is for illustrative purposes only & should be used as such by any prospective purchaser. Created especially for Love Property by Vue3sixty Ltd