



# Sales.

Honeysuckle Walk,  
Horsham, RH12 4ES

£230,000





## Honeysuckle Walk, Horsham, RH12 4ES



The property offers spacious accommodation and is set on the first floor, with a large living room, adjacent to a modern fitted kitchen, with attractive views across open fields to the rear. The kitchen is fitted with a range of modern floor and wall mounted units, and a range of integrated appliances. There are two bedrooms, and a modern white bathroom suite, that has recently been refitted, with an additional shower unit and screen. The property also benefits from access to a large loft space and a full height storage cupboard. Externally, there is parking to the front of the property, with additional parking area, for residents. To the rear there is a communal garden, with an area of lawn, and flower and shrub borders, that backs onto fields.

### ADDITIONAL INFORMATION

Tenure: Leasehold

Lease Term: From 2 October 1995 to 25 December 2119

Service Charge: £1,247 per annum

Service Charge Review Period: tbc

Ground Rent: N/A

**AGENTS NOTE:** We strongly advise any intending purchaser to verify the above with their legal representative prior to committing to a purchase. The above information has been supplied to us by our clients/managing agents in good faith, but we have not necessarily had sight of any formal documentation relating to the above.



**Buses**

3 minute walk



**Shops**

Tesco Express  
5 minute walk



**Trains**

Littlehaven – 0.5 miles  
Horsham – 1.4 miles



**Sport & Leisure**

Pavilions in the Park  
1.7 miles



**Rental Income**

£tbc pcm



**Schools**

Littlehaven Infant  
Bohunt



**Broadband**

Up to 2000 Mbps



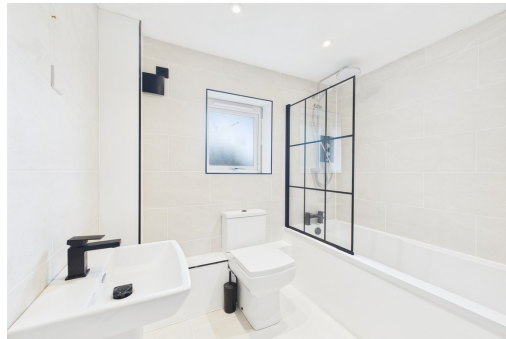
**Roads**

M23  
5.9 miles



**Council Tax**

Band B

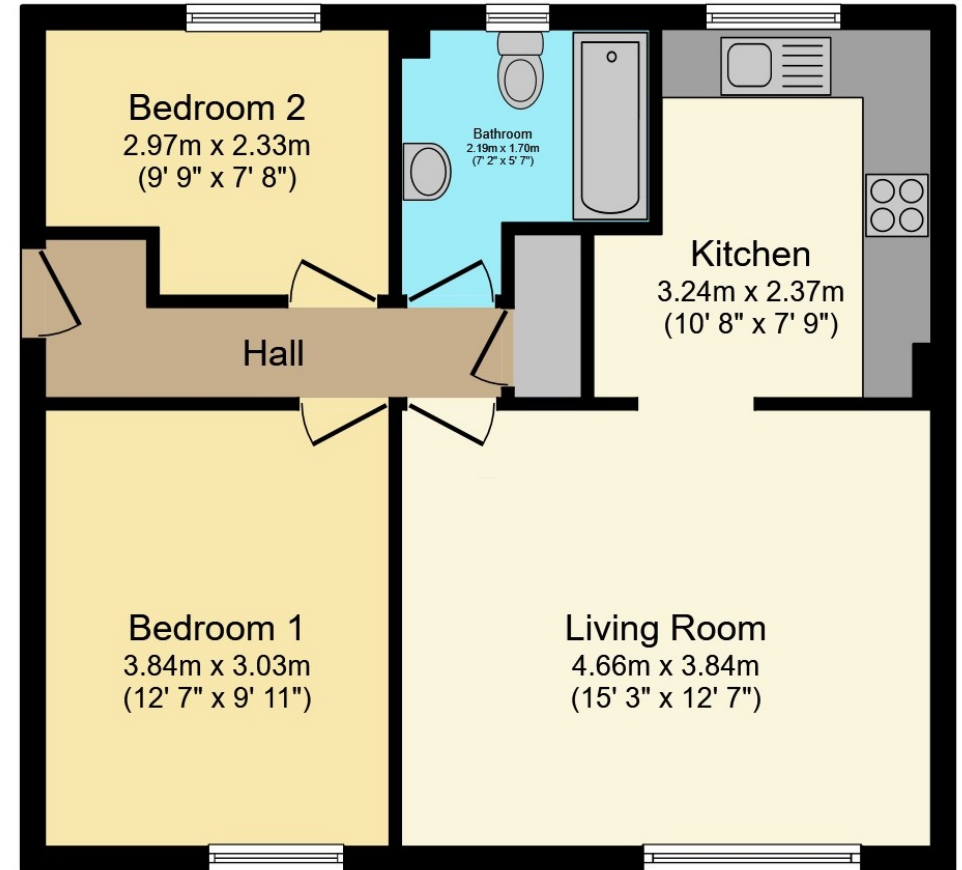


**Total Approximate Floor Area**

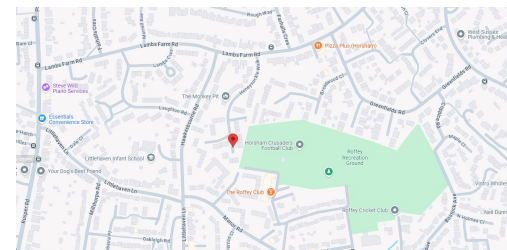
**602 sq.ft. / 55.9 sq.m.**

Viewing arrangements by  
appointment through :

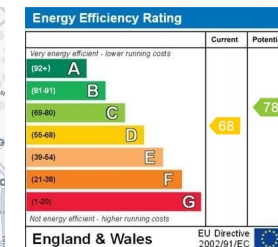
Brock Taylor  
01403 272022  
horshamsales@brocktaylor.co.uk



### Map Location



### EPC Rating



**Brock Taylor Disclaimer:** we would like to inform prospective purchasers that these sales particulars have been prepared as a general guide only. A detailed survey has not been carried out, nor the services, appliances and fittings tested. Room sizes should not be relied upon for furnishing purposes and are approximate. If floor plans are included they are for guidance only and illustration purposes only and may not be to scale. If there are any important matters likely to affect your decision to buy, please contact us before viewing this property.

**Residential sales, lettings,  
land and new homes.**

**01403 272022**

**brocktaylor.co.uk**

2-6 East Street, Horsham, West Sussex, RH12 1HL