



Oliver Gardens, London, E6 5SE £1,500 Per Calendar Month



****SEMI-DETACHED BUNGALOW WITHIN WALKING DISTANCE TO BECKTON DLR STATION****

OC Homes are delighted to present to the Lettings market, this one bedroom semi-detached bungalow within walking distance to Beckton DLR station. This property boasts a lounge, fitted kitchen, three piece bathroom suite, double bedroom with built in wardrobes, and spacious private garden to both the front and rear of the property.

Benefits include laminate flooring, d/g, g/c/h and is ideally situated in close proximity to local amenities and public transport links.

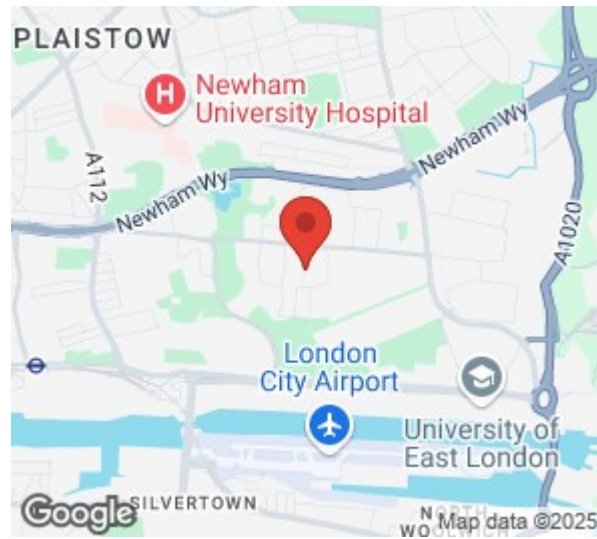
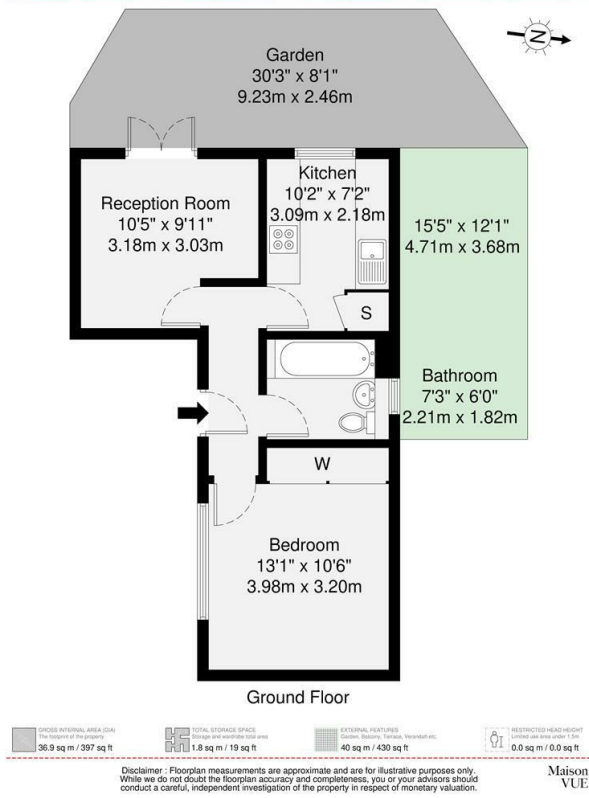
AVAILABLE 31/03/2025

- SEMI DETACHED BUNGALOW
- LARGE DOUBLE BEDROOM
- FRONT & REAR GARDENS
- WITHIN WALKING DISTANCE TO BECKTON DLR STATION
- MODERN KITCHEN
- AVAILABLE 31/03/2025

Viewing

Please contact our OC Homes Leyton Office on 02085561212 if you wish to arrange a viewing appointment for this property or require further information.





Energy Efficiency Rating	
Current	Potential
68	89

Very energy efficient - lower running costs

England & Wales EU Directive 2002/91/EC

Environmental Impact (CO ₂) Rating	
Current	Potential
80	91

Very environmentally friendly - lower CO₂ emissions

England & Wales EU Directive 2002/91/EC



These particulars, whilst believed to be accurate are set out as a general outline only for guidance and do not constitute any part of an offer or contract. Intending purchasers should not rely on them as statements of representation of fact, but must satisfy themselves by inspection or otherwise as to their accuracy. No person in this firm's employment has the authority to make or give any representation or warranty in respect of the property.