



## Buckle Street, Aldgate, E1 8ZS £3,000 Per Calendar Month



**\*\*STUNNING DEVELOPMENT - 2 BED 2 BATH IN ALDGATE \*\***

OC Homes are delighted to present this stunning 2 bed apartment in Aldgate, E1 to the Lettings market. The development has just been finished to a superb standard throughout, boasting access to transport links as well as a communal roof terrace offering views of the City skyline.

This second-floor two-bedroom apartment offers two double bedrooms, one with en-suite shower room, three piece bathroom suite, an open plan reception room with fully fitted kitchen, dining area, as well as storage cupboard. The floor space is over 750 sq ft and boasts some stunning views of the City skyline.

AVAILABLE 27/05/2025

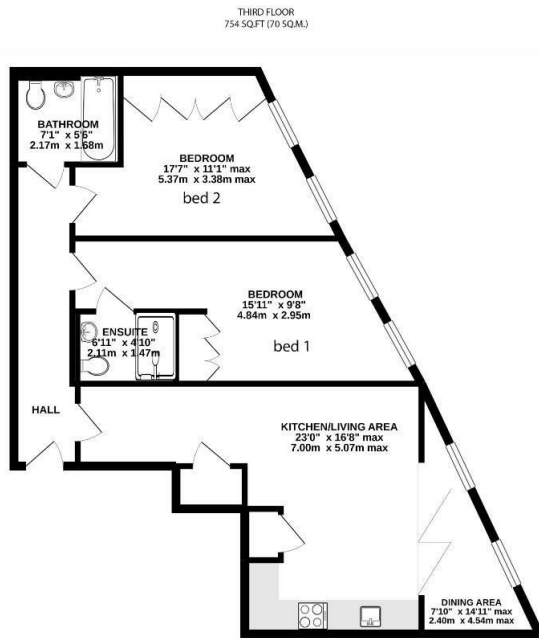
\*images include virtually staged furniture

- STUNNING DEVELOPMENT
- 2 BED 2 BATH
- EXCELLENT TRANSPORT LINKS
- SUPERB LOCATION
- COMMUNAL ROOF TERRACE
- AVAILABLE 27/05/2025

### Viewing

Please contact our OC Homes Leyton Office on 02085561212

if you wish to arrange a viewing appointment for this property or require further information.



TOTAL APPROX. FLOOR AREA 754 SQ.FT (70 SQ.M.)

Whilst every attempt has been made to ensure the accuracy of the floor plan contained here, measurements of doors, windows, rooms and any other items are approximate and no responsibility is taken for any error, omission or misstatement. This plan is for illustrative purposes only and should be used as such by any prospective purchaser.

Copyright You.Sold.co.uk

Produced for One Click Homes



Energy Efficiency Rating

	Current	Potential
Very energy efficient - lower running costs		
(92 plus) A		
(81-91) B		
(69-80) C		
(55-68) D		
(38-54) E		
(21-37) F		
(1-20) G		
Not energy efficient - higher running costs		
	88	88

Environmental Impact (CO<sub>2</sub>) Rating

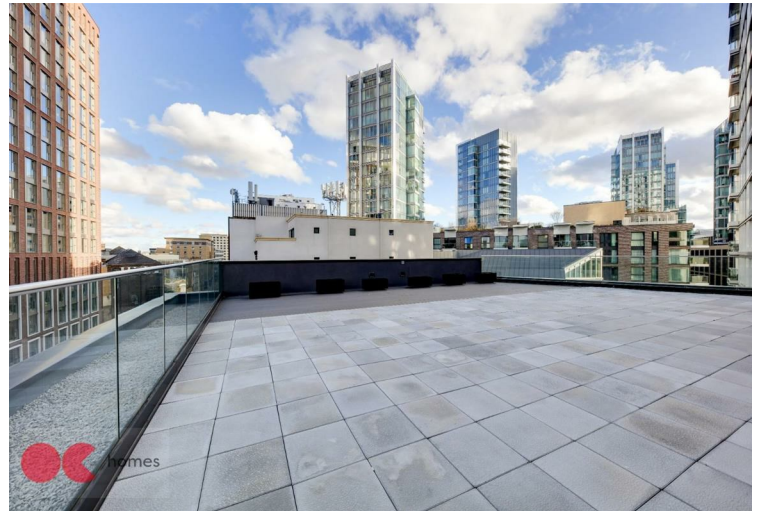
	Current	Potential
Very environmentally friendly - lower CO <sub>2</sub> emissions		
(92 plus) A		
(81-91) B		
(69-80) C		
(55-68) D		
(38-54) E		
(21-37) F		
(1-20) G		
Not environmentally friendly - higher CO <sub>2</sub> emissions		

England & Wales

EU Directive 2002/91/EC

England & Wales

EU Directive 2002/91/EC



These particulars, whilst believed to be accurate are set out as a general outline only for guidance and do not constitute any part of an offer or contract. Intending purchasers should not rely on them as statements of representation of fact, but must satisfy themselves by inspection or otherwise as to their accuracy. No person in this firm's employment has the authority to make or give any representation or warranty in respect of the property.



320 High Road Leyton, Leyton, London, E10 5PW  
t. 02085561212 | e. hello@ochomes.co.uk  
w. oneclickhomes.co.uk