



Gordon Road, Ilford, IG1 1SN

Offers In Excess Of £575,000



****IDEAL FAMILY HOME WITH A DRIVEWAY, TWO BATHROOMS AND LOFT CONVERSION, LOCATED IN A PRIME LOCATION, WITHIN WALKING DISTANCE TO ILFORD RAIL STATION (ELIZABETH LINE)****

OC Homes is delighted to present this perfect family home in the heart of Ilford. This end-of-terrace home, which has already been extended at the rear, boasts a spacious lounge, a fitted kitchen that leads onto a large garden, and a three-piece shower room, all located on the ground floor.

The first floor offers three bedrooms and a three-piece bathroom suite and you also have access to a sizeable loft conversion offering a fourth bedroom.

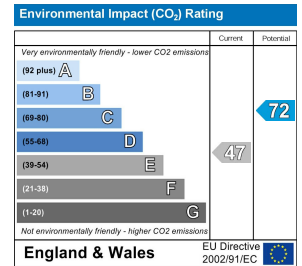
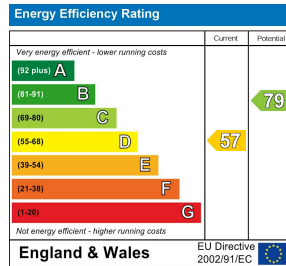
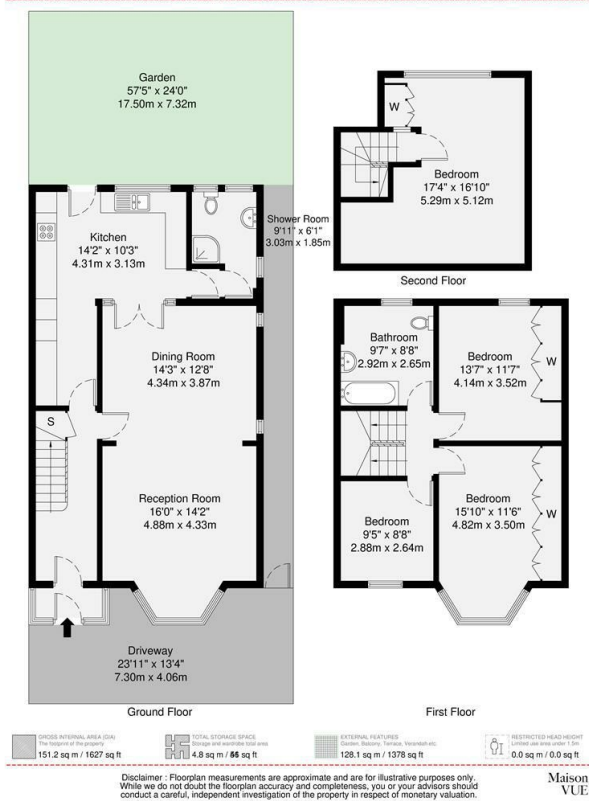
This is a fantastic opportunity to acquire a spacious family home in a highly sought-after location. Situated in the heart of Ilford, this property benefits from excellent transport links, including easy access to Ilford Station (Elizabeth Line), providing quick connections to central London. The home is also within the catchment area of outstanding schools, making it ideal for families. A variety of local amenities, including shops, restaurants, and parks, are within easy reach, ensuring convenience at your doorstep.

- PRIME LOCATION WITHIN ILFORD
- WALKING DISTANCE TO ILFORD STATION (ELIZABETH LINE)
- THROUGH LOUNGE
- GROUND FLOOR SHOWER ROOM
- FIRST FLOOR FAMILY BATHROOM
- DRIVEWAY FOR 2 CARS

Viewing

Please contact our OC Homes Leyton Office on 02085561212 if you wish to arrange a viewing appointment for this property or require further information.





These particulars, whilst believed to be accurate are set out as a general outline only for guidance and do not constitute any part of an offer or contract. Intending purchasers should not rely on them as statements of representation of fact, but must satisfy themselves by inspection or otherwise as to their accuracy. No person in this firm's employment has the authority to make or give any representation or warranty in respect of the property.