



Farnes Drive, Romford, RM2 6NT

£2,100 Per Calendar Month

 3  1  1  D

****SEMI-DETACHED HOUSE WITH OFF STREET PARKING IN GIDEA PARK****

OC Homes are delighted to present this three-bedroom, semi-detached house with off-street parking for two cars and a garage. The property boasts three bedrooms, a through-lounge, modern kitchen, conservatory, three-piece bathroom suite, as well as a good sized garden.

The property is located at the end of the cul-de-sac providing a peaceful atmosphere. Also, the property boasts a number of easy access routes into both Gidea Park and Romford with their respective local amenities and transport links.

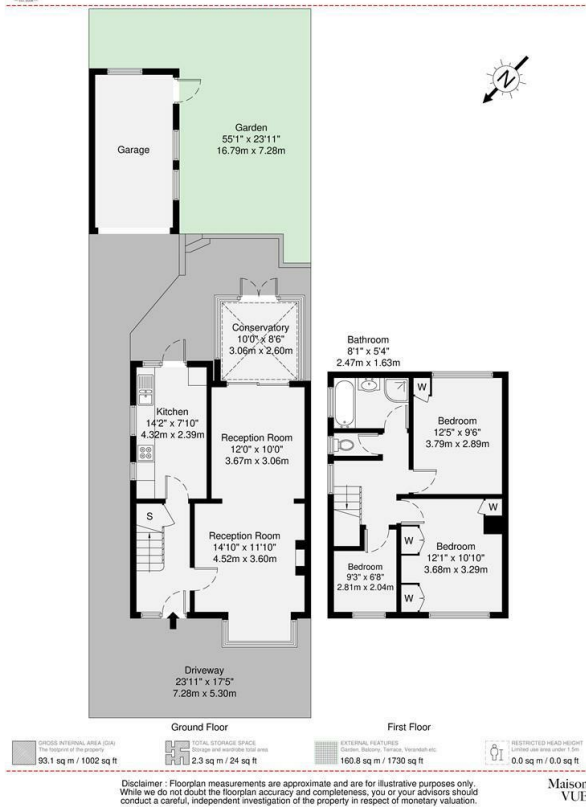
AVAILABLE 30/07/2025

- THREE BEDROOM SEMI DETACHED HOUSE
- LARGE THROUGH LOUNGE LIVING AREA
- SPACIOUS GARDEN
- OFF STREET PARKING
- TRANSPORT LINKS FROM GIDEA PARK STATION
- IDEAL FAMILY HOME
- AVAILALBE FROM 30/07/2025

Viewing

Please contact our OC Homes Gidea Park Office on 01708989888 if you wish to arrange a viewing appointment for this property or require further information.





Energy Efficiency Rating			Environmental Impact (CO ₂) Rating		
Very energy efficient - lower running costs	Current	Potential	Very environmentally friendly - lower CO ₂ emissions	Current	Potential
(92 plus) A		91	(92 plus) A		91
(81-91) B			(81-91) B		
(69-80) C	68		(69-80) C		
(55-68) D			(55-68) D	54	
(38-54) E			(38-54) E		
(21-38) F			(21-38) F		
(1-20) G			(1-20) G		
Not energy efficient - higher running costs			Not environmentally friendly - higher CO ₂ emissions		
England & Wales			England & Wales		
EU Directive 2002/91/EC			EU Directive 2002/91/EC		



These particulars, whilst believed to be accurate are set out as a general outline only for guidance and do not constitute any part of an offer or contract. Intending purchasers should not rely on them as statements of representation of fact, but must satisfy themselves by inspection or otherwise as to their accuracy. No person in this firm's employment has the authority to make or give any representation or warranty in respect of the property.