



## Maxwell Road, Romford, RM7 OFF £1,850 Per Calendar Month



**\*\*TWO BEDROOM, TWO BATHROOM APARTMENT IN MODERN DEVELOPMENT BY ROMFORD STATION ON ELIZABETH LINE - AVAILABLE NOW \*\***

OC Homes are delighted to offer to the Lettings market, this well-presented two-bedroom apartment on the third floor of this modern development located within walking distance to Romford Station on Elizabeth Line as well as all the local amenities of nearby Romford town centre. The property boasts lots of natural light and a private balcony. It is a great size and available immediately.

Accommodation comprises; a bright and spacious reception room with open plan kitchen and private balcony, two double bedrooms (one with en-suite shower room), and modern three piece bathroom suite. Benefits include secure telephone entry system, communal green space, and it is ideally situated close to local amenities and public transport links. There is also the option to take on the underground car parking space for an additional monthly amount. To arrange a viewing please call the OC Homes lettings team now..

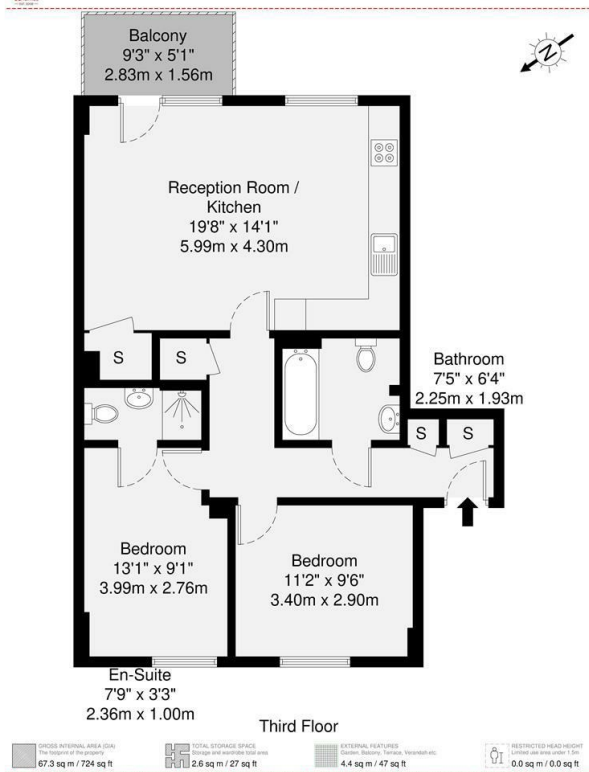
**AVAILABLE NOW**

### Viewing

Please contact our OC Homes Gidea Park Office on 01708989888 if you wish to arrange a viewing appointment for this property or require further information.

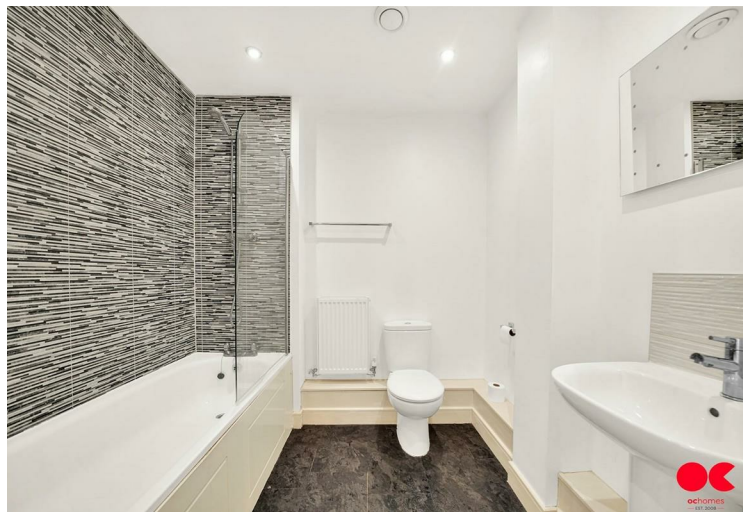
- TWO BED TWO BATH APARTMENT
- MODERN DEVELOPMENT
- OPTION FOR UNDERGROUND PARKING
- PRIVATE BALCONY
- WALKING DISTANCE TO ROMFORD STATION
- AVAILABLE NOW





Energy Efficiency Rating		
Very energy efficient - lower running costs		
(92 plus) A		
(81-91) B		
(69-80) C		
(55-68) D		
(39-54) E		
(21-38) F		
(1-20) G		
Not energy efficient - higher running costs		
England & Wales		

Environmental Impact (CO <sub>2</sub> ) Rating		
Very environmentally friendly - lower CO <sub>2</sub> emissions		
(92 plus) A		
(81-91) B		
(69-80) C		
(55-68) D		
(39-54) E		
(21-38) F		
(1-20) G		
Not environmentally friendly - higher CO <sub>2</sub> emissions		
England & Wales		



These particulars, whilst believed to be accurate are set out as a general outline only for guidance and do not constitute any part of an offer or contract. Intending purchasers should not rely on them as statements of representation of fact, but must satisfy themselves by inspection or otherwise as to their accuracy. No person in this firm's employment has the authority to make or give any representation or warranty in respect of the property.