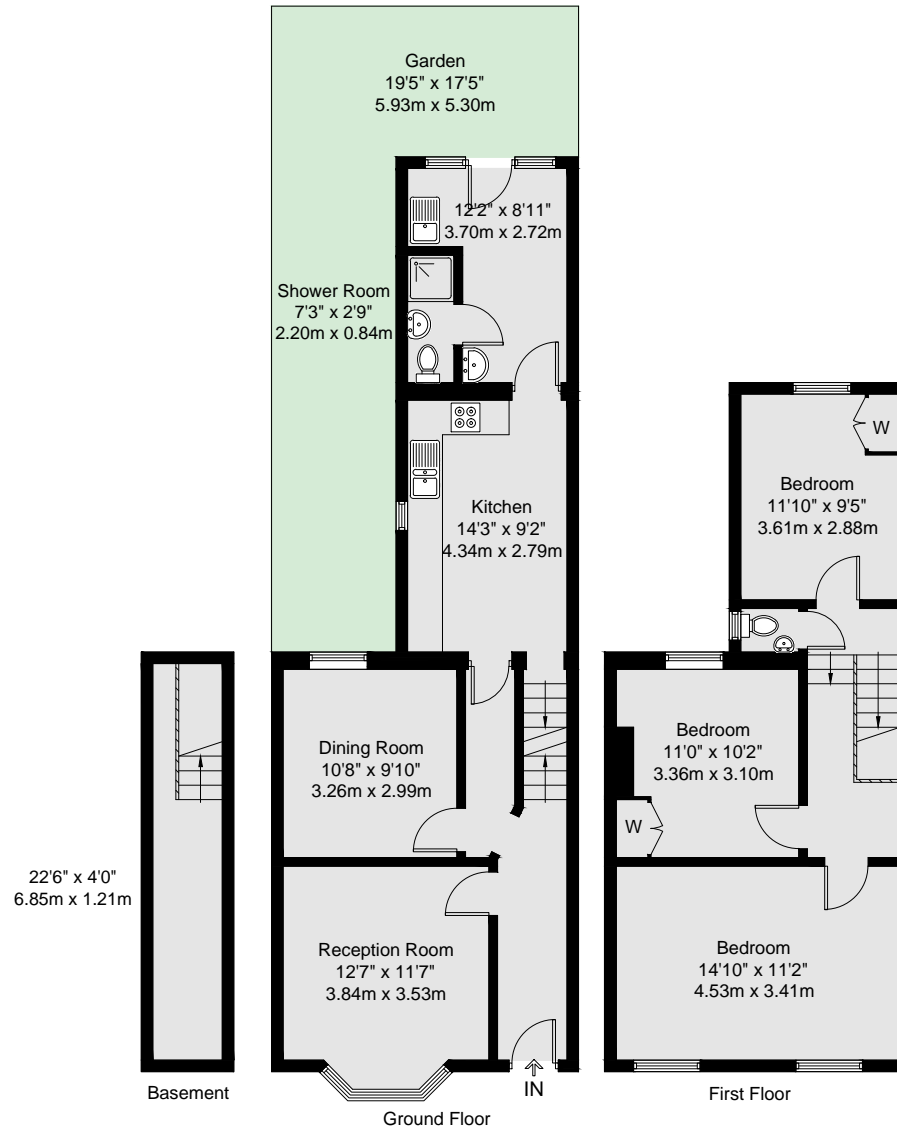
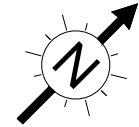



ochomes

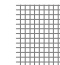
Westdown Road, E15


GROSS INTERNAL AREA
112.0 sq m / 1205 sq ft



 GROSS INTERNAL AREA (GIA)
The footprint of the property
112.0 sq m / 1205 sq ft

 TOTAL STORAGE SPACE
Storage and wardrobe total area
1.0 sq m / 11 sq ft

 EXTERNAL STRUCTURAL FEATURES
Garden, Balcony, Terrace, Verandah etc.
49.9 sq m / 537 sq ft

 RESTRICTED HEAD HEIGHT
Limited use area under 1.5m
0.0sq m / 0.0 sq ft

Disclaimer : Floorplan measurements are approximate and are for illustrative purposes only. While we do not doubt the floorplan accuracy and completeness, you or your advisors should conduct a careful, independent investigation of the property in respect of monetary valuation.

Maison
VUE