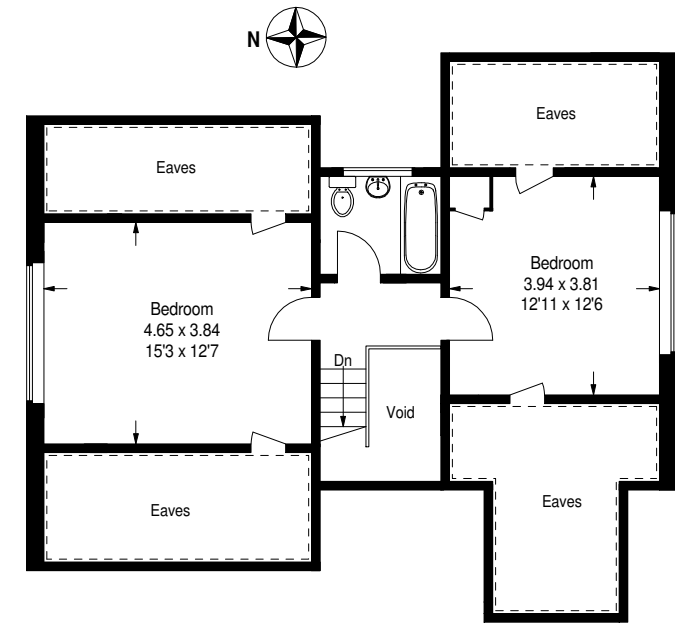


Coombe Road, CR0

Approximate Gross Internal Area (Excluding Void / Including Eaves) = 161.5 sq m / 1739 sq ft
 Garage = 15 sq m / 162 sq ft
 Total = 176.5 sq m / 1901 sq ft



Ground Floor



--- Reduced headroom
 below 1.5 m / 5'0"

LIVIN
 CROYDON

First Floor