



the
ACCOMMODATION
BUREAU

£1,000 Per Calendar Month
College Green, Bodmin, PL31





Property Description

A three bedroom terraced house close to Bodmin College.

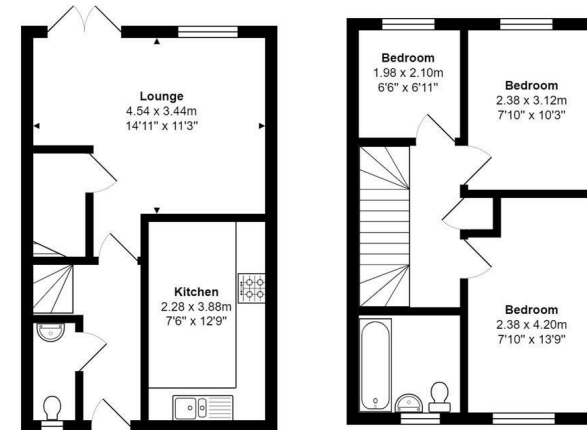
This well-maintained property comprises an entrance hall leading to the kitchen/breakfast room with a built-in electric oven and hob. Downstairs w.c., lounge with french doors leading out to a low maintenance rear garden. There is also an understairs storage cupboard.

Upstairs: there are two double bedrooms and one single bedroom. The bathroom has an electric shower over the bath.

Gas central heating. Enclosed rear garden laid to chippings. Garage plus 1 parking space.

Energy Rating C (76). Council Tax Band B. Deposit £1,150. Sorry, no smokers or pets.

Floorplan



Total Area: 67.8 m² ... 730 ft²
All measurements are approximate and for display purposes only

Location



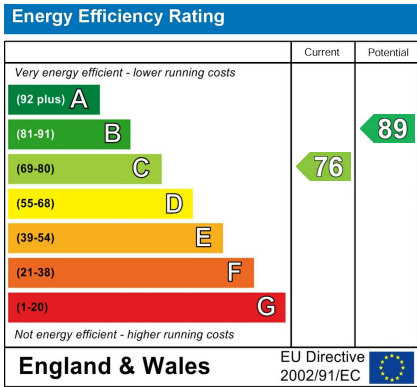
Features

- Terraced House
- Close To Bodmin College
- Garage & Parking Space
- Council Tax Band B

Letting Information

- Rent: £1,000 Per Calendar Month
- Holding Deposit: £100
- Total Deposit Required: £1,150
- Local Authority: Cornwall Council
- Council Tax Band: B
- Furnishing: Unfurnished
- Available From: 4th February 2026

Energy Efficiency Rating



For further information, please call The Accommodation Bureau on 01208 78480.
7 Turf Street, Bodmin, PL31 2DJ. bodmin@theaccommodationbureau.com.

These particulars, whilst believed to be accurate are set out as a general outline only for guidance and do not constitute any part of an offer or contract. Prospective tenants should not rely on them as statements of representation of fact, but must satisfy themselves by inspection or otherwise as to their accuracy. No person in this firms employment has the authority to make or give any representation or warranty in respect of the property.

