

Property Description

Sorry, we are now fully booked for viewings. Spacious 3 Bedroom Semi-Detached House With Driveway

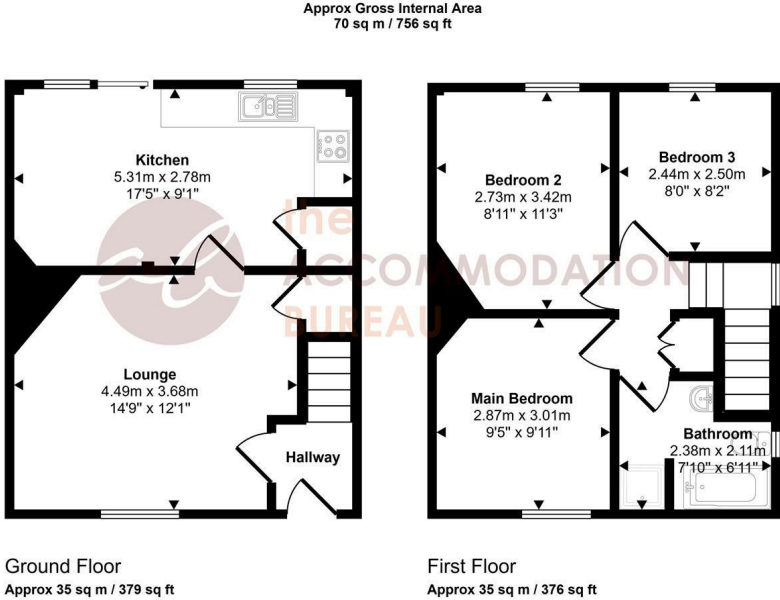
This partly refurbished semi-detached home is situated in a convenient location just a two-minute walk from Bodmin College. The property benefits from a generous driveway providing parking for multiple vehicles and an enclosed rear garden.

On the ground floor, the entrance hall leads into a well-proportioned lounge with understairs storage. To the rear is a newly fitted kitchen/diner including an electric oven, gas hob, and space for other appliances. A large storage cupboard offers additional space for a tumble dryer. Patio doors open onto a patio area (with outside tap and electrical supply) with steps down to a lawned garden, which is enclosed and includes a shed. A side gate leads to the driveway.

Upstairs, there are two double bedrooms and one single bedroom, along with a bathroom fitted with a bath and separate shower cubicle with electric shower. Gas central heating is installed throughout.

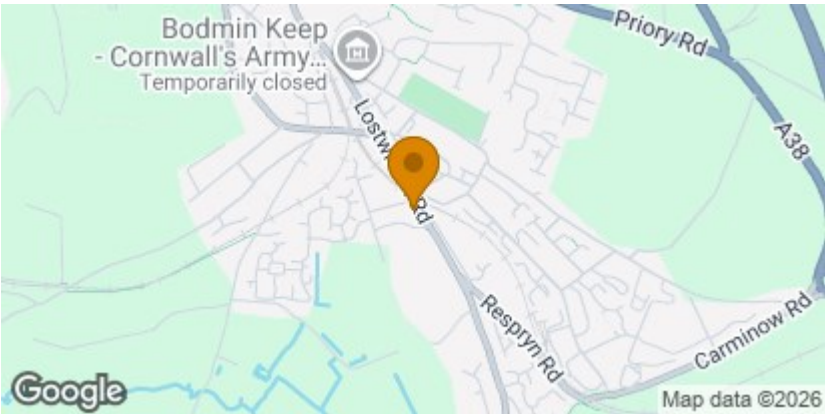
Energy Rating D (65). Council Tax Band A. Deposit £1,095. Sorry, no smokers, pets or sharers.

Floorplan



This floorplan is only for illustrative purposes and is not to scale. Measurements of rooms, doors, windows, and any items are approximate and no responsibility is taken for any error, omission or mis-statement. Icons of items such as bathroom suites are representations only and may not look like the real items. Made with Made Snappy 360.

Location



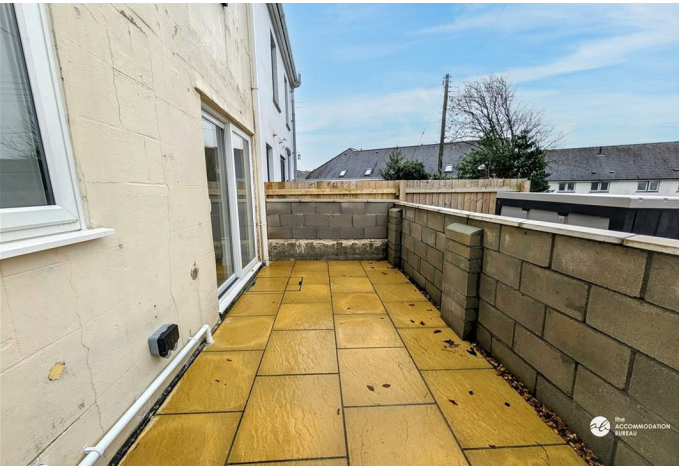
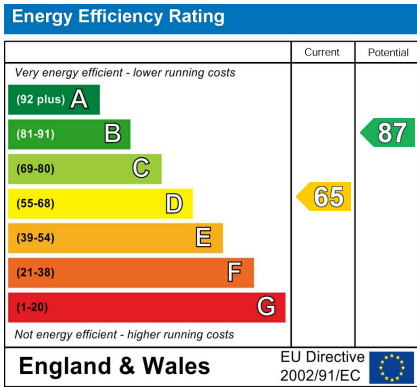
Features

- Newly Fitted Kitchen
- Driveway For Multiple Cars
- Electric Oven & Gas Hob
- Bath & Separate Shower Cubicle
- Newly Decorated
- Council Tax Band A
- Gas Central Heating
- Two Minute Walk To Bodmin College
- Energy Rating D
- Garden & Shed

Letting Information

Rent: £950 Per Calendar Month
Holding Deposit: £100
Total Deposit Required: £1,095
Local Authority: Cornwall Council
Council Tax Band: A
Furnishing: Unfurnished
Available From: 5th December 2025

Energy Efficiency Rating



For further information, please call The Accommodation Bureau on 01208 78480.
7 Turf Street, Bodmin, PL31 2DJ. bodmin@theaccommodationbureau.com.

These particulars, whilst believed to be accurate are set out as a general outline only for guidance and do not constitute any part of an offer or contract. Prospective tenants should not rely on them as statements of representation of fact, but must satisfy themselves by inspection or otherwise as to their accuracy. No person in this firms employment has the authority to make or give any representation or warranty in respect of the property.

